



Consultant	Wahib Medanat Consultant Engineer	Rep No.	11-16042022
Contractor	Derar Saraireh & Sons for Engineering & Contracting	Tender No.	(11/2019/USAID/SKEP/3/S) Schools for a Knowledge Economy Project (SKEP) - Phase (3) Package (1, 2)
Site Name	Um Al Dananir Basic Mixed School- Al Balqa	Day/ Date	Sat. 16/04/2022
Duration of Project	450 Calendar Days	Total Project Budget	9,789,417.840 JD

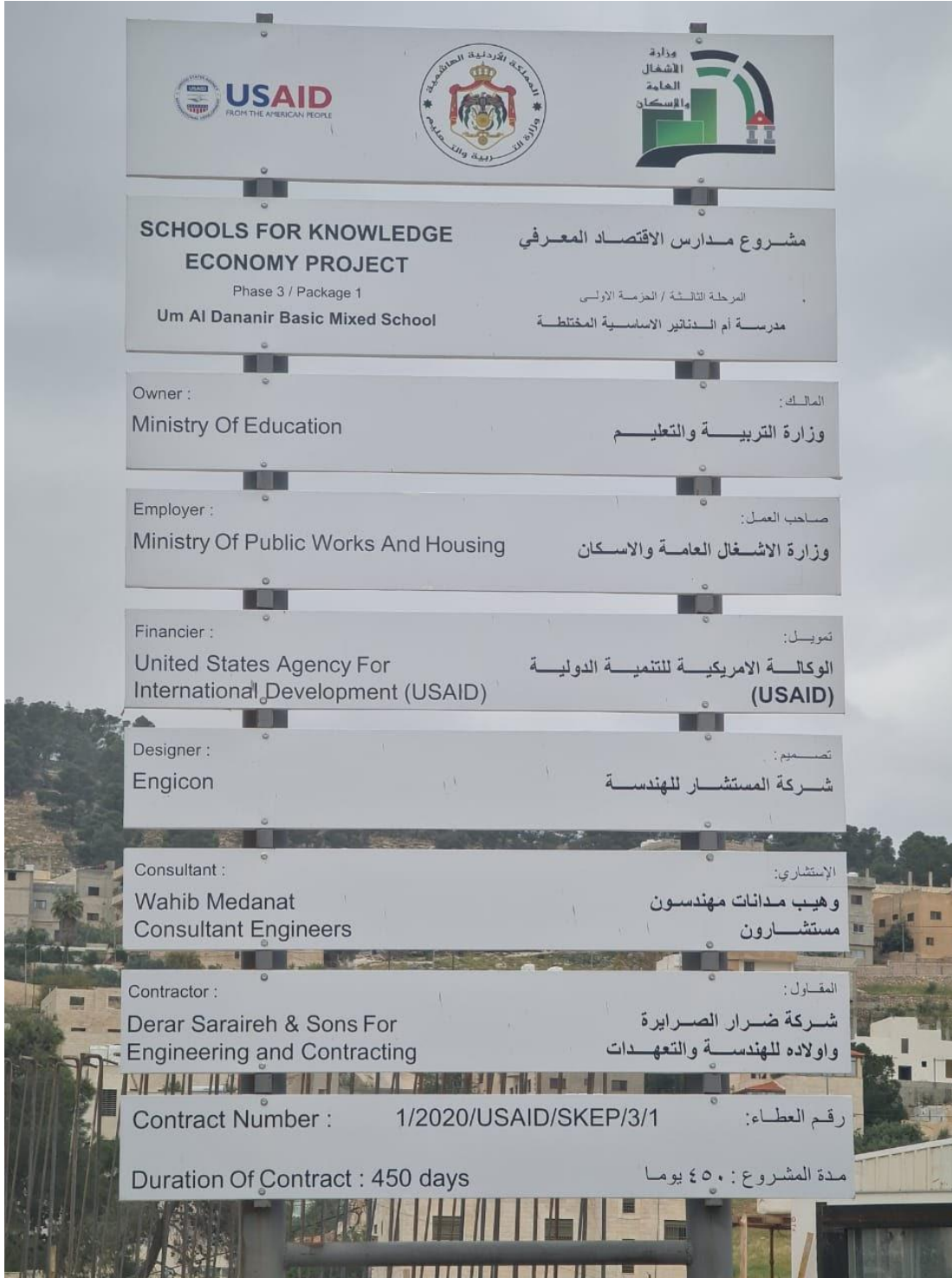
No.	Visitors		Remarks
1	Suhair Amarin	- Project Dir./Head of Architectural Department	
2	Hashem Abu Kwaik	- Senior Civil Engineer	
3	Akram Khammes	- Head of Electrical Department	
4	Marwan Sonna'a	- Head of Mechanical Department	
5	Hasan Shaqboua	- Quality Control Manager	

Visit Notes

No.	Description
1	The supervision team discussed with the Contractor the way of opening and closing the steel protection screens at the windows of canteen as per the details in the drawings.
2	The team also discussed the details related to the site work.
3	The supervision team discussed with the Contractor the preliminary installation of radiators (unpainted). The final installation shall be installed after the completion of painting works for the radiators and the related internal walls.
4	The team inspected the quality of installed cabinets at the kindergarten and observed defects in those cabinets such as defects in the beech wood frame and broken partitions (laminated faces).



5	In a number of cases, the team observed that radiators adjacent to the cabinets in the kindergarten have to be shifted 20-30 cm to allow easy open/close to the cabinets doors pointing out that the executed works are not in accordance to the submitted workshop drawings.
6	The team requested the Contractor to check the verticality of handles of the cabinets since one handle was observed not vertical. The Contractor was requested to perform all needed repairs to the cabinets in the kindergarten before preliminary handing over to the supervision site staff.
7	The team requested the Contractor to apply protection means to the imported wooden doors since defects were observed in some parts of those doors.
8	The team reminded the Contractor to prepare a sample to close the gap around between the walls and the fire hose cabinets installed in.
9	The team requested the Contractor to store the equipment of the elevators in an appropriate way since the current location is not convenient and might lead to defects in the equipment.
10	The team inspected the prepared sample of the expansion joints finishing and provide the Contactor with a number of remarks: - Ensuring that the plastering work for the wall at the two sides and the expansion joint match together. - Chamfering of the granite coping. - Ensuring the installation of beads at the two sides of the expansion joint.
11	The team inspected the drainage accessories for the installed sample of wash trough at the wet area.
12	The team observed a number of broken ceramic tiles at the walls in the wet areas. The Contractor was requested to replace.
13	The team inspected the installed aluminum windows and observed a number of windows having wrong dimensions of the frames and requested the Contractor to replace
14	The team discussed with the Contractor the sewage network at the southern end of the site and the connection to the public network.



Project ID Sign
on Site



Sterilization and signing visitors' attendance sheet at the entrance of the site, complying with Covid-19 Protocol



General view of the project site

(figure:01, 02, 03, 04 & 05)

(figure:01)



(figure:02)



(figure:03)



(figure:04)



(figure:05)



The supervision team discussed with the Contractor the way of opening and closing the steel protection screens at the windows of canteen as per the details in the drawings

(figure:06)



The team also discussed the details related to the site work

(figure:07)



(figure:08)

The team discussed with the Contractor the sewage network at the southern end of the site and the connection to the public network.



(figure:08 & 09)

(figure:09)



the team observed that radiators adjacent to the cabinets in the kindergarten have to be shifted 20-30 cm to allow easy open/close to the cabinets doors

(figure:10)



Discussing with the Contractor the preliminary installation of radiators (unpainted). The final installation shall be installed after the completion of painting works for the radiators and the related internal walls

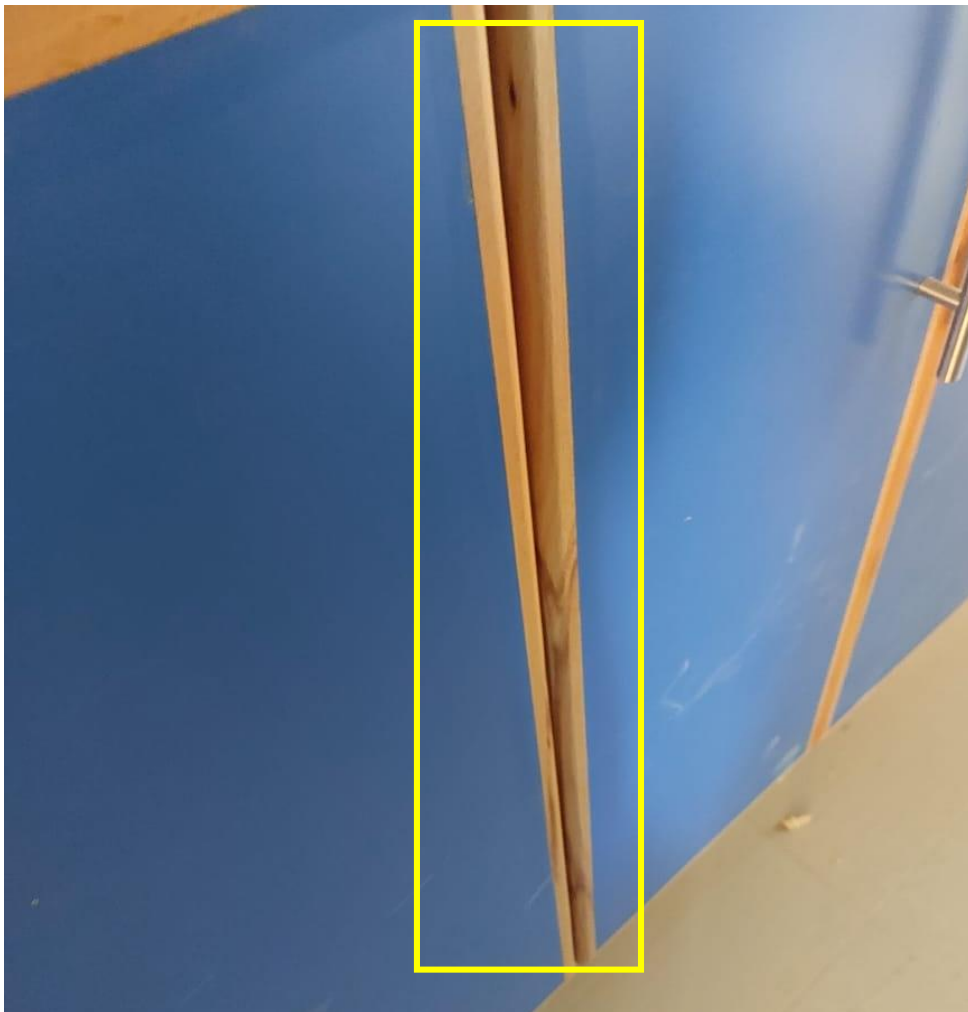
(figure:11)



(figure:12)

The team inspected the quality of installed cabinets at the kindergarten and observed defects in those cabinets such as defects in the beech wood frame and broken partitions (laminated faces)

(figure:12, 13, 14 & 15)



(figure:13)



(figure:14)



(figure:15)



The team requested the Contractor to check the verticality of handles of the cabinets since one handle was observed not vertical. The Contractor was requested to perform all needed repairs to the cabinets in the kindergarten before preliminary handing over to the supervision site staff

(figure:16)

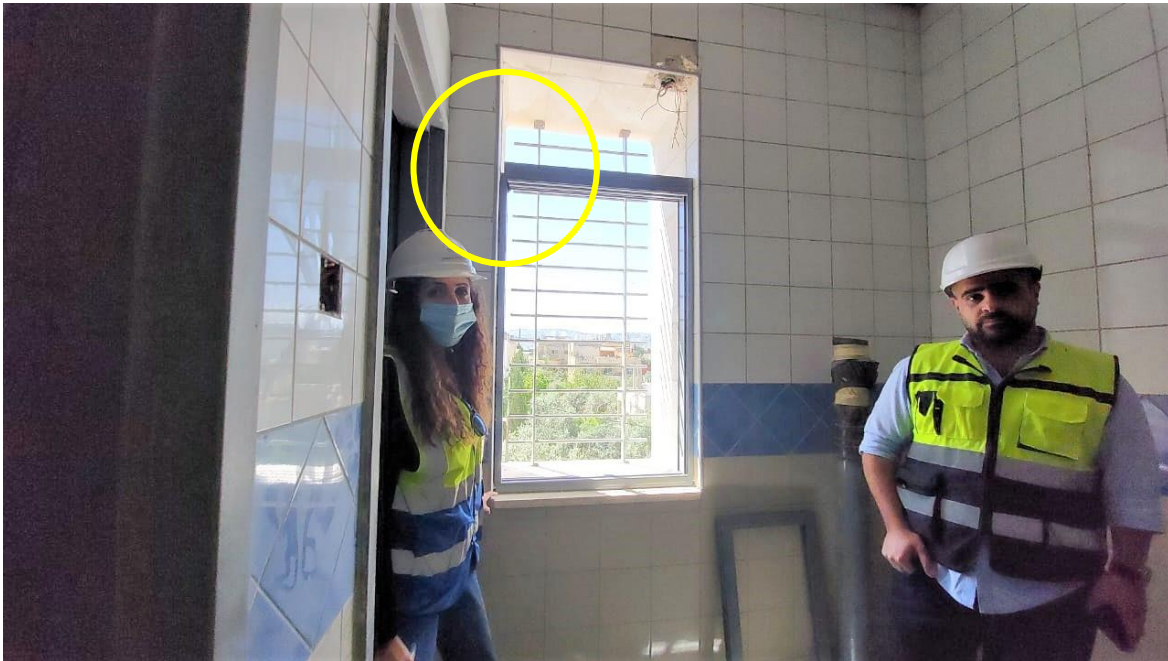


The team requested the Contractor to apply protection means to the imported wooden doors since defects were observed in some parts of those doors
(figure:17 & 18)

(figure:17)



(figure:18)



The team observed a number of windows frames and found some having wrong dimensions and requested the Contractor to replace

(figure:19 & 20)

(figure:19)



(figure:20)



(figure:21)



The team observed a number of broken ceramic tiles at the walls in the wet areas. The Contractor was requested to replace

(figure:21 & 22)

(figure:22)



(figure:23)

The team inspected the drainage accessories for the installed sample of wash trough at the wet area



(figure:23 & 24)

(figure:24)



The team reminded the Contractor to prepare a sample to close the gap between the walls and the fire hose cabinets

(figure:25)



(figure:26)

The team inspected the prepared sample of the expansion joints finishing and provide the Contactor with a number of remarks:

- Ensuring that the plastering work for the wall at the two sides and the expansion joint match together
- Chamfering of the granite coping
- Ensuring the installation of beads at the two sides of the expansion joint

(figure:26 & 27)



(figure:27)



The team requested the Contractor to store the equipment of the elevators in an appropriate way since the current location is not convenient and might lead to defects in the equipment

(figure:28)