



# SKEP III Home Office Support Site Visit Report

**WAHIB  
MEDANAT**  
consultant engineers

Consultant	Wahib Medanat Consultant Engineer	Rep No.	22-16062022
Contractor	Dijlah Establishment Constr. Contracting	Tender No.	(11/2019/USAID/SKEP/3/S) Schools for a Knowledge Economy Project (SKEP) - Phase (3) Package (1, 2)
Site Name	Thahr Al Sarow Basic School for Boys- Jerash	Day/ Date	Wed. 16/06/2022
Duration of Project	450 Calendar Days	Total Project Budget	8,314,983.735 JD

No.	Visitors		Remarks
1	Suhair Amarin	- Project Dir./Head of Architectural Department	
2	Hashem Abu Kwaik	- Senior Civil Engineer	
3	Akram Khammes	- Head of Electrical Department	
4	Marwan Sonna'a	- Head of Mechanical Department	
5	Hasan Shaqboua	- Quality Control Manager	

## Visit Notes

No.	Description
1	The supervision team inspected the stone re-building for one façade after removing completely the previously built defected stones for the said façade. The team requested the Contractor to replace one defected built stone.
2	The team discussed and agreed with the Contractor regarding the limit line between the stone tiled area and the interlock tiles at the school entrance area.
3	The team observed that the Contractor executed the porcelain wall tiles at the building entrance- ramp area. The team requested the Contractor to remove the tiled porcelain and submit workshop drawings to be reviewed and approved by the Engineer pointing out that the tiled walls do not comply with approved workshop drawing. Possible solutions to the shape and tile color distribution were discussed.



No.	Description
4	The team inspected the steel doors at the school entrances and observed that the installed doors don't comply with the architectural details in relation to the dimensions of steel sections.
5	The team observed broken edges of the granite coping at the corridors.
6	The team observed that the Contractor to this date has not executed the blockwork partition between the Data cables and the electrical cables at the shaft. The team stressed on the Contractor to execute the said partition without delay.
7	The team inspected the installation of the main distribution board in the electrical room in the presence of the supervision electrical engineer.
8	The team observed that the granite coping at the corridors still has a defect in installation that is not repaired. The defect is related to the protrusion of the coping over the plastering.
9	The team inspected the executed curtain wall at the staircase façade and observed variations regarding the fixation points, relation with the built stones at the window jambs and the window sills as well. The team requested the Contractor to rectify.
10	The team inspected the installed granite for the elevator's door frame and observed protrusion at the corners and requested the Contractor to rectify.
11	The team observed protruded sharp edges at the aluminum windows in the corridor and requested the Contractor to rectify to avoid harming the users.
12	The team observed that the Contractor is using a temporary electrical board fixed at one wall inside the building. The team requested the Contractor to remove the said board to ensure a well painted finish. The board might be fixed at a special stand for the purpose of work execution.
13	The team observed that some ceilings have waving in the plastering and painting in the corridors. The Contractor was requested to rectify.
14	The team inspected the curtain wall at the staircase façade and observed variations regarding the fixation points, relation with the built stones at the window jambs and the window sills as well. The team requested the Contractor to check and dismantle the sections at the whole façade which are fixed incorrectly and rectify other works if needed in coordination with the supervision team. The relation between stone at the jambs, window sills, internal plastering and curtain wall should be corrected (the aluminum section shall be installed covering the line between the stone and the internal plastering).



Project ID Sign  
on Site





General view of the project site

(Figure: 01, 02, 03, 04 & 05)

(Figure: 01)



(Figure: 02)





(Figure: 03)



(Figure: 04)





(Figure: 05)



Complete removal of the built defected stones for the front façade

(Before)

(Figure: 06 & 07)

(Figure: 06)

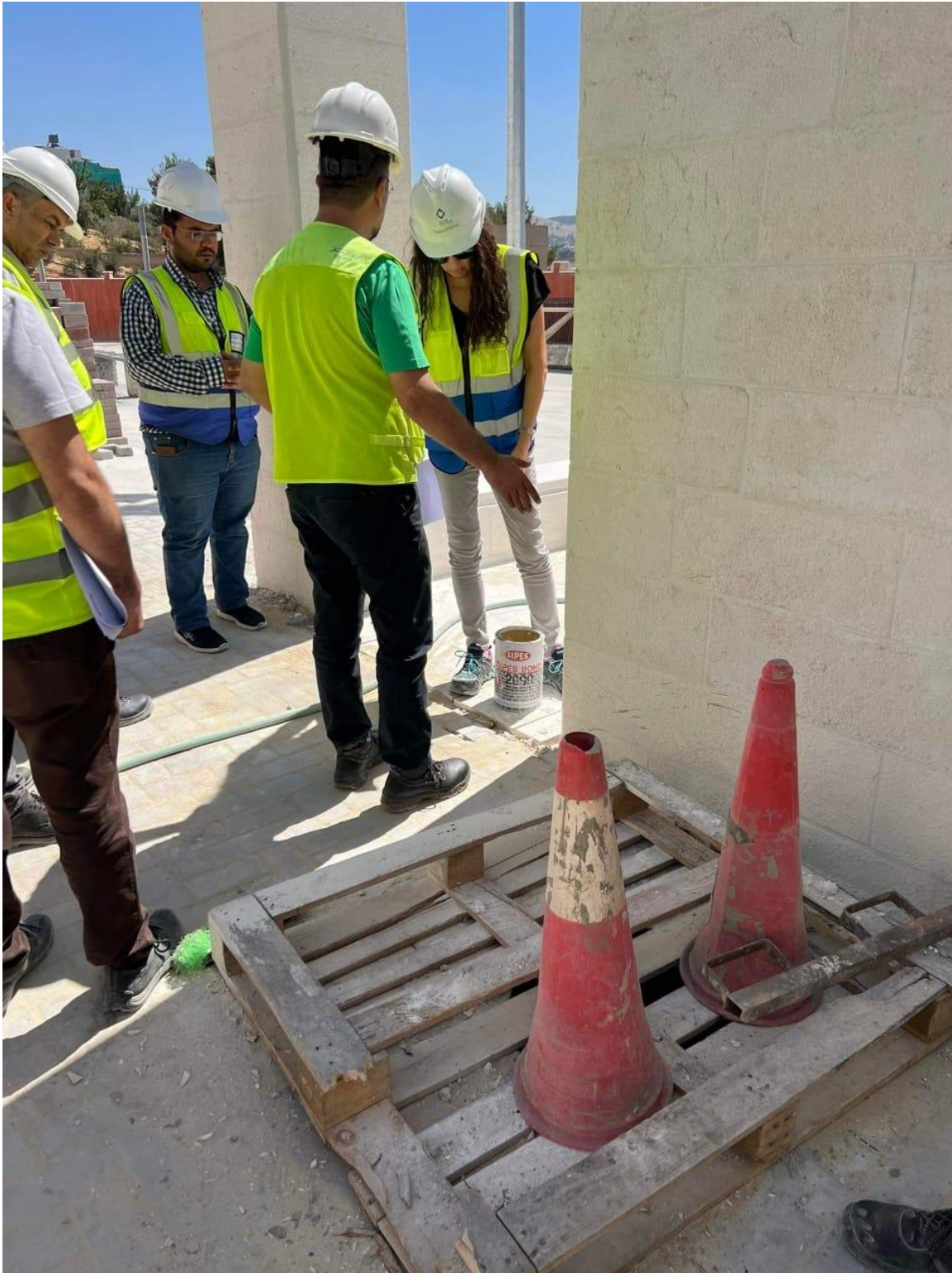




The supervision team inspected the stone re-building for one façade after removing completely the previously built defected stones for the said façade. The team requested the Contractor to replace one defected built stone (After)

(Figure: 07)





The team discussed and agreed with the Contractor regarding the limit line between the stone tiled area and the interlock tiles at the school entrance area

(Figure: 08)





The team inspected the steel doors at the school entrances and observed that the installed doors don't comply with the architectural details in relation to the dimensions of steel sections

(Figure: 09)





(Figure: 10)

Inspecting the executed work for the amphitheater. Comments were given to the Contractor

(Figure: 10 & 11)



(Figure: 11)





(Figure: 12)

The team observed that the Contractor executed the porcelain wall tiles at the building entrance- ramp area. The team requested the Contractor to remove the tiled porcelain and submit workshop drawings to be reviewed and approved by the Engineer pointing out that the tiled walls do not comply with approved workshop drawing. Possible solutions to the shape and tile color distribution were discussed



(Figure: 12 & 13)

(Figure: 13)



The team inspected the installation of the main distribution board in the electrical room in the presence of the supervision electrical engineer

(Figure: 14)



The team observed that the Contractor to this date has not executed the blockwork partition between the Data cables and the electrical cables at the shaft. The team stressed on the Contractor to execute the said partition without delay

(Figure: 15)





(Figure: 16)

The team observed that the Contractor is using a temporary electrical board fixed at one wall inside the building. The team requested the Contractor to remove the said board to ensure a well painted finish. The board might be fixed at a special stand for the purpose of work execution



(Figure: 16 & 17)

(Figure: 17)



The team observed that some ceilings have waving in the plastering and painting in the corridors. The Contractor was requested to rectify

(Figure: 18)





The team inspected the executed curtain wall at the staircase façade and observed variations regarding the fixation points, relation with the built stones at the window jambs and the window sills as well. The team requested the Contractor to check and dismantle the sections at the whole façade which are fixed incorrectly (the aluminum section shall be installed covering the line between the stone and the internal plastering)

(Figure: 19)



The team inspected the installed granite for the elevator's door frame and observed protrusion at the corners and requested the Contractor to rectify

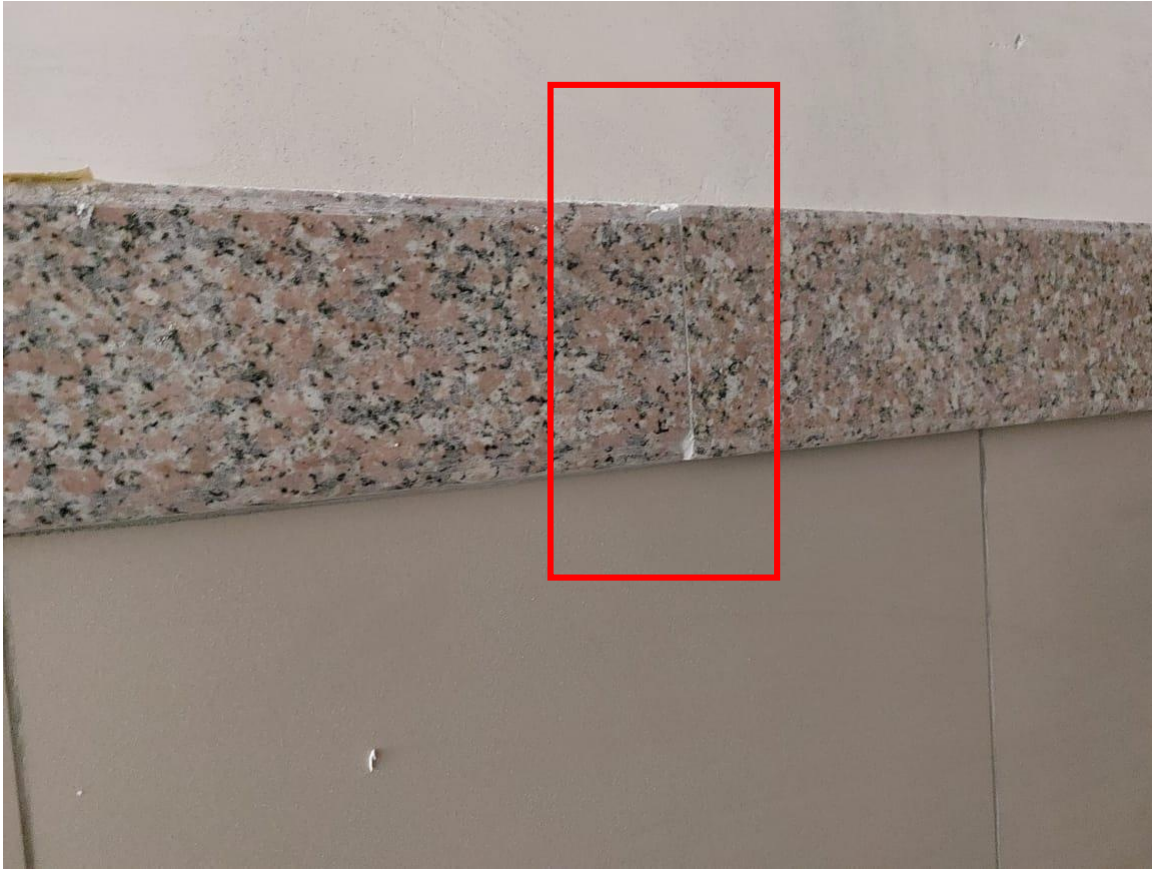
(Figure: 20)



The team observed protruded sharp edges at the aluminum windows in the corridor and requested the Contractor to rectify to avoid harming the users

(Figure: 21)





The team observed broken edges of the granite coping at the corridors

(Figure: 22)