



Consultant	Wahib Medanat Consultant Engineer	Rep No.	12-12012022
Contractor	Derar Saraireh & Sons for Engineering & Contracting	Tender No.	(11/2019/USAID/SKEP/3/S) Schools for a Knowledge Economy Project (SKEP) - Phase (3) Package (1, 2)
Site Name	Al Khansa' Basic Mixed School- Al Balqa	Day/ Date	Wed. 12/01/2022
Duration of Project	450 Calendar Days	Total Project Budget	9,789,417.840 JD

No.	Visitors		Remarks
1	Suhair Amarin	- Project Dir./Head of Architectural Department	
2	Hashem Abu Kwaik	-Senior Civil Engineer	
3	Akram Khammes	- Head of Electrical Department	
4	Marwan Sonna'a	-Head of Mechanical Department	
5	Hasan Shaqboua	-Quality Control Manager	

Visit Notes

No.	Description
1	The supervision team instructed the Contractor upon previous discussion to make the surface of fair-face casted boundary walls rough by chipping step followed by plastering.
2	The supervision team observed that the installed cartonal boards and the waterproofing asphalt paint for the external footing have been damaged due to the excavation work. The Contractor promised to rectify and re-install accordingly.
3	It was observed that the Contractor has started with the excavation of the external sewage network and progressing in the excavation and concrete work for the external walls.



4	The supervision team instructed the Contractor to implement protection to the excavation sides of the external sewage network excavation.
5	It was observed that the Contractor rectified the defects in stone around the outlet of the rain water drainage pipes. The Contractor was instructed to rectify the defects observed in stone building at different locations in the facades.
6	Defects have been observed in the painted walls of the shafts due to rain water penetration. The Contractor was instructed to rectify the defects and accelerate the closing of those shafts.
7	The supervision team inspected the newly delivered porcelain floor tiles and observed that it is manufactured at UAE, (RAK).
8	The supervision inspected the porcelain floor tiling work using the new delivered tiles replacing the removed defective tiles. The team observed that the quality of work is much better than before except some remarks the Contractor was instructed to rectify.
9	The team observed that the Contractor applied protection to the floor tiling by laying carton boards on the tiled areas.
10	The team inspected the delivered granite for the staircases and the Contractor informed the team that the stair treads have been returned to the factory in order to make the required grooves in those treads.
11	The team discussed with the Contractor the process of tiling at the corridors and the distribution of colored tiles and the control of the cut-off pieces. The team instructed the Contractor to always submit AutoCAD drawings for the review of the supervision before the start of tiling.
12	The supervision team inspected the wall tiling work at the wet areas and observed the dimension of cut-off pieces in some places is considerably less than specified. The Contractor was instructed to remove the tiles installed at a number of walls and re-tile correctly.
13	The Contractor was instructed to accelerate the work in the bases of the mechanical equipment at the roof to allow for the work of waterproofing at zone "B".
14	It was observed that the Contractor executed the screed layer at the roof-zones "A" and "C".



15	The team instructed the Contractor to finalize the stone work around the main entrance canopy at zone "B".
16	The team discussed the status of the graded natural ground and requested the Contractor to submit for the supervision review a method statement for the plastering work of the high boundary walls to insure safe process for the workers.
17	The supervision team inspected the pumps room at the roof and instructed the Contractor to tile the said room with porcelain tiles as per requirements.
18	The team and the Contractor met with the safety engineer of CMTO who was simultaneously on the site. The safety engineer clarified that some remarks related to the safety precautions in the site should be attended by the Contractor. The Contractor promised to work accordingly.
19	The team discussed with the Contractor the dimension of the door threshold and its relation with the cut-off pieces of the porcelain floor tiles.
20	The supervision team instructed the Contractor to replace the broken window sills and those with shorter dimensions than required.
21	The team observed that the Contractor has not wrapped part of steel door frames as required.



Project ID
Sign on Site





WAHIB
MEDANAT
consultant engineers



Sterilization and signing visitors' attendance sheet at the entrance of the site, complying with Covid-19 Protocol



General view of the project site

(Figure: 01, 02 & 03)

(Figure: 01)



(Figure: 02)



(Figure: 03)



The supervision team observed that the installed carton boards and the waterproofing asphalt paint for the external footing have been damaged due to the excavation work. The Contractor promised to rectify and re-install accordingly

(Figure: 04)



(Figure: 05)

The team inspected the delivered granite for the staircases and the Contractor informed the team that the stair treads have been returned to the factory in order to make the required grooves in those treads



(Figure: 05 & 06)

(Figure: 06)



The supervision team instructed the Contractor to make the surface of fair-face casted boundary walls rough by chipping step followed by plastering

(Figure: 07)



(Figure: 08)



It was observed that the Contractor has started with the excavation of the external sewage network and progressing in the excavation and concrete work for the external walls

(Figure: 08, 09 & 10)

(Figure: 09)



(Figure: 10)



(Figure: 11)

The supervision team inspected the newly delivered porcelain floor tiles and observed that it is manufactured at UAE, (RAK)



(Figure: 11 & 12)

(Figure: 12)



(Figure: 13)

The team and the Contractor met with the safety engineer of CMTO who was simultaneously on the site. The safety engineer clarified that some remarks related to the safety precautions in the site should be attended by the Contractor. The Contractor promised to work accordingly



(Figure: 13 & 14)

(Figure: 14)



(Figure: 15)

The team instructed the Contractor to finalize the stone work around the main entrance canopy at zone "B"



(Figure: 15 & 16)

(Figure: 16)



(Figure: 17)

The Contractor was instructed to rectify the defects observed in stone at different locations in the facades

(Figure: 17, 18 & 19)



(Figure: 18)



(Figure: 19)



It was observed that the Contractor rectified the defects in stone around the outlet of the rain water drainage pipes

(Figure: 20)



The Contractor was instructed to accelerate the work in the bases of the mechanical equipment at the roof to allow for the work of waterproofing at zone "B"

(Figure: 21)



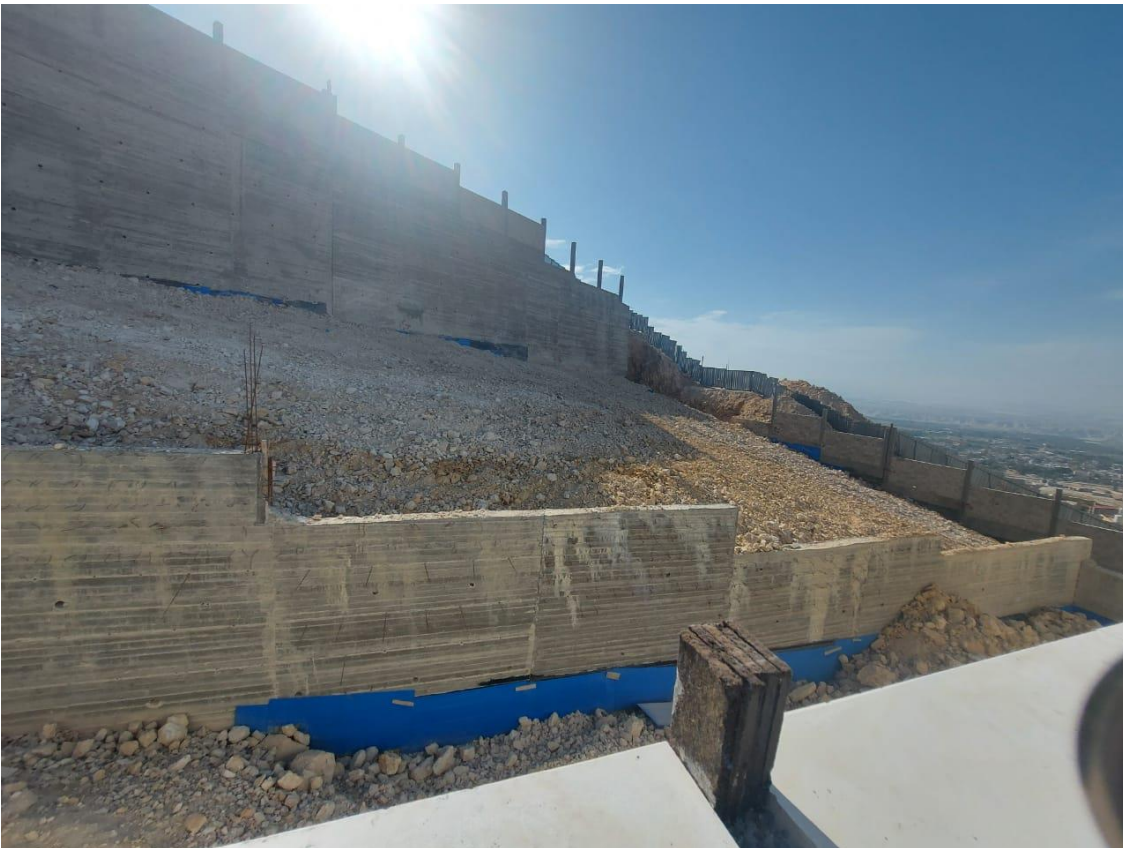
It was observed that the Contractor executed the screed layer at the roof- zones "A" and "C"

(Figure: 22)



(Figure: 23)

The team discussed the status of the graded natural ground and requested the Contractor to submit for the supervision review a method statement for the plastering work of the high boundary walls to insure safe process for the workers



(Figure: 23 & 24)

(Figure: 24)



(Figure: 25)

Humidity and defects have been observed in the painted walls of the shafts due to rain water penetration. The Contractor was instructed to rectify the defects and accelerate the closing of those shafts

(Figure: 25 & 26)



(Figure: 26)



The team observed that the Contractor applied protection to the floor tiling by laying cartonal boards on the tiled areas

(Figure: 27)



The supervision inspected the porcelain floor tiling work using the new delivered tiles. The team observed that the quality of work is much better than before except some remarks the Contractor was instructed to rectify

(Figure: 28 & 29)

(Figure: 28)



(Figure: 29)



Discussing the process of tiling at the corridors the distribution of colored tiles and the control of the cut-off pieces. The team instructed the Contractor to always submit AutoCAD drawings for the review of the supervision before the start of tiling

(Figure: 30)



The team discussed with the Contractor the dimension of the door threshold and its relation with the cut-off pieces of the porcelain floor tiles

(Figure: 31)



The supervision team inspected the wall tiling work at the wet areas and observed the dimension of cut-off pieces in some places is considerably less than specified

(Figure: 32 & 33)

(Figure: 32)



The Contractor was instructed to remove the tiles installed at a number of walls and re-tile correctly

(Figure: 33)



(Figure: 34)

The supervision team instructed the Contractor to replace the broken window sills and those with shorter dimensions than required

(Figure: 34 & 35)



(Figure: 35)



The supervision team inspected the pumps room at the roof and instructed the Contractor to tile the said room with porcelain tiles as per requirements

(Figure: 36)



A meeting was held at the site offices to discuss all remarks observed in the team's tour

(Figure: 37)