



# SKEP III Home Office Support Site Visit Report

**WAHIB  
MEDANAT**  
consultant engineers

Consultant	Wahib Medanat Consultant Engineer	Rep No.	12-11042022
Contractor	Derar Saraireh & Sons for Engineering & Contracting	Tender No.	(11/2019/USAID/SKEP/3/S) Schools for a Knowledge Economy Project (SKEP) - Phase (3) Package (1, 2)
Site Name	Al Khansa' Basic Mixed School- Al Balqa	Day/ Date	Mon. 11/04/2022
Duration of Project	450 Calendar Days	Total Project Budget	9,789,417.840 JD

No.	Visitors		Remarks
1	Suhair Amarin	- Project Dir./Head of Architectural Department	
2	Hashem Abu Kwaik	- Senior Civil Engineer	
3	Akram Khammes	- Head of Electrical Department	
4	Marwan Sonna'a	- Head of Mechanical Department	
5	Hasan Shaqboua	- Quality Control Manager	

## Visit Notes

No.	Description
1	<p>At the beginning of the visit, the supervision team met at the site with the Designer's representatives visiting the site upon prior arrangement by the supervision engineer and participated in joint tour in the presence of the Contractor. General issues related to the site have been discussed focusing on the finishing work to the area at the southern end of the site.</p> <p>A meeting minutes has been prepared covering the said visit and the meeting at the site offices:</p> <div style="border: 1px solid black; padding: 5px; margin-top: 10px;"> <p>The Purpose of the Meeting is to discuss the required details for the connection between Wall 4 &amp; wall 5.</p> </div>



	<p>1. The participants conducted a tour on the site and in particular the site border at the southern end where W4 met with W5. The “Designer” feedback was verbally provided to the Supervision and the Contractor regarding the landscape of the area at that side and the Rip-Rap and the concrete walls.</p> <p>The drawings and details of the solution shall be provided by the Designer aiming to protect the site from any coming rainwater since the time of constructing the adjacent street is not near.</p> <p>2. The Designer requested that the parapets at steep places shall be not less than 1.10m instead of his previous feedback to be 0.90m.</p> <p>3. The Designer requested that the walls of the rooms constructed at the roofs shall be stone finish instead of plastering on a condition that the B.O.Q amounts are sufficient.</p>
2	<p>After that the supervision conducted their own tour and observed the following: The supervision team inspected the installed wooden doors and requested the Contractor to replace the leafs having defected beech wood frame.</p>
3	<p>The team observed the gap between the edge of extinguisher cabinets and the plastering wall and discussed with the Contractor some suggestions of the appropriate solutions.</p>
4	<p>The team discussed with the Contractor the details of finishing the expansion joints and the team will inspect the executed sample at Um Al-Dananir School.</p>
5	<p>The team discussed with the “Designer” the height of parapets at the steep areas and the Designer requested to execute the parapet to be not less than (1.10m) height as per the previous feedback by the Designer to be 0.90m reminding that it was (0.20m) in the design drawings.</p>
6	<p>The team stressed on that the Contractor should take action to conduct the water penetration test to the roof of the building.</p>
7	<p>The team observed that number of stone coping are broken and need to be replaced.</p>
8	<p>The team observed that parts of the stone facades have dirt on and need to be cleaned.</p>



9	The team observed that the hangers used to hold the suspended ceiling frame, some of them are not vertical. The Contractor was requested to ensure the verticality of those hangers.
10	The team inspected the ceramic wall tiles installed at the wet areas and stressed that the small cut-off pieces and the broken tiles wherever found should be replaced.



Project ID  
Sign on Site





Sterilization and signing visitors' attendance sheet at the entrance of the site, complying with Covid-19 Protocol



General view of the project site

(Figure: 01, 02, 03 & 04)

(Figure: 01)



(Figure: 02)



(Figure: 03)



(Figure: 04)



(Figure: 05)

The team observed that parts of the stone facades have dirt on and need to be cleaned

(Figure: 05 & 06)



(Figure: 06)





(Figure: 07)

the supervision team met with the Designer's representatives visiting the site upon prior arrangement to discuss general issues focusing on the finishing work of the area at the southern end of the site

(Figure: 07 & 08)



(Figure: 08)



(Figure: 09)

The team discussed with the “Designer” the height of parapets at the steep areas and the Designer requested to execute the parapet to be not less than (1.10m) height as per the previous feedback by the Designer to be 0.90m reminding that it was (0.20m) in the design drawings

(Figure: 09 & 10)



(Figure: 10)



The team stressed on that the Contractor should take action to conduct the water penetration test to the roof of the building

(Figure: 11)



The team observed that number of stone coping are broken and need to be replaced

(Figure: 12)



(Figure: 13)

The team inspected the ceramic wall tiles installed at the wet areas and stressed that the small cut-off pieces and the broken tiles wherever found should be replaced



(Figure: 13 & 14)

(Figure: 14)



(Figure: 15)



The supervision team inspected the installed wooden doors and requested the Contractor to replace the leafs having defected beech wood frame

(Figure: 15 & 16)

(Figure: 16)



The team observed the gap between the edge of extinguisher cabinets and the plastering wall and discussed with the Contractor some suggestions of the appropriate solutions

(Figure: 17)



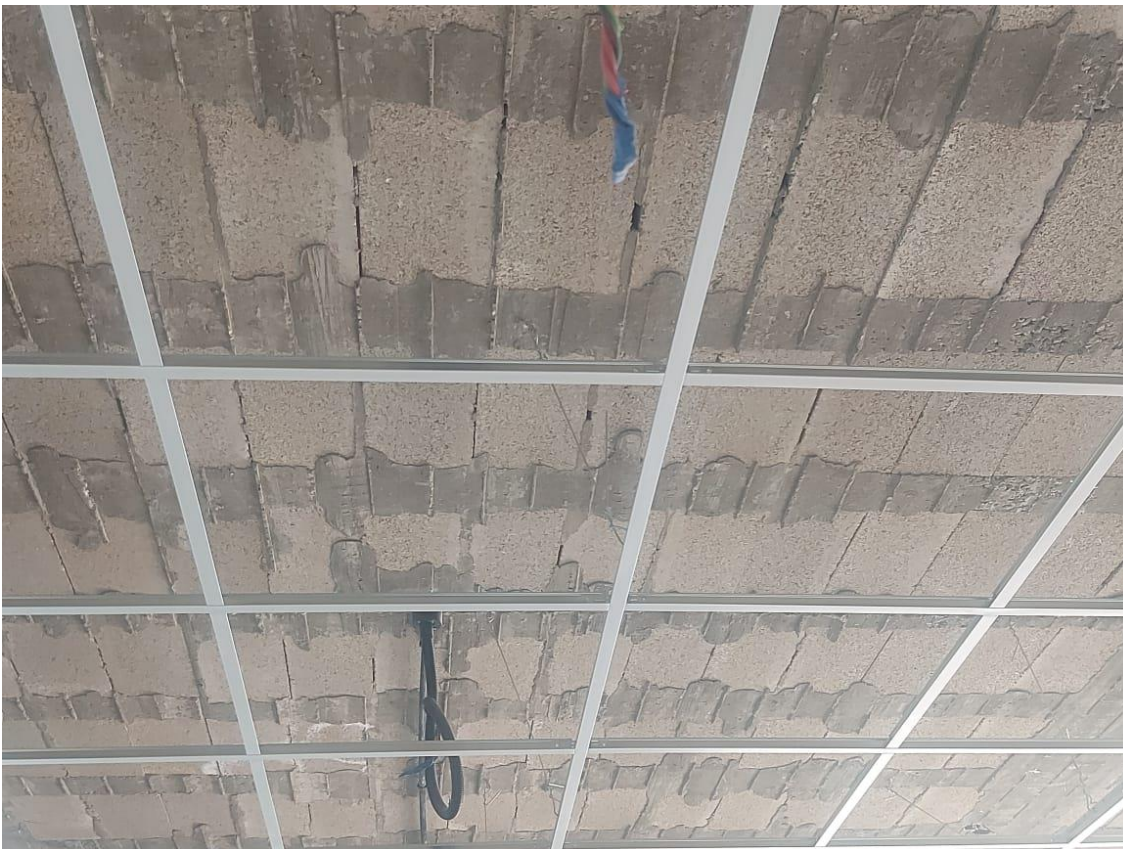
The team discussed with the Contractor the details of finishing the expansion joints and the team will inspect the executed sample at Um Al-Dananir School

(Figure: 18)



(Figure: 19)

The team observed that the hangers used to hold the suspended ceiling frame, some of them are not vertical. The Contractor was requested to ensure the verticality of those hangers



(Figure: 19 & 20)

(Figure: 20)



A meeting was held at the site offices with the Designer to discuss the required details for the connection between Wall 4 & wall 5.

*(Figure: 21)*