



USAID
FROM THE AMERICAN PEOPLE



Schools for Knowledge Economy Project (SKEP III)

Funded by the United States Agency for International Development

Phase III/ Package (2)

10/2019/USAID/SKEP/3/2

- Thahr Al-Sarow Basic School for Boys- Jerash
- Jumana Bint Abi Taleb Basic Mixed School- Amman
- Hay Al-Iskan Basic Mixed School- Jerash

Monthly Progress Report

No. (3)

December. 2020



**WAHIB
MEDANAT**
consultant engineers

 + 962 6 5821206

+ 962 6 5817847

+ 962 79 7650576

 + 962 6 5862357

 925497 Amman 11190 Jordan

 mail@medanat.com

info@medanat.com

 www.medanat.com



Monthly Progress Supervision Report

December 2020

List of Abbreviations

MOE	Ministry of Education
MPWH	Ministry of Public Works & Housing
USAID	United States Agency for International Development
SKEP	Schools for Knowledge Economy Project
JEA	Jordan Engineers Association

Table of Contents

1	List of Abbreviations	3
2	Table of Contents	4
3	Project Particulars	6
4	Supervision Staff Members	8
5	Executive Summary	9
6	Summary of Activities	10
7	Meetings and Site Visits Logs	11
8	Correspondence Logs	13
9	Submittals Logs	13
10	Lab-Test Results Log	14
11	Demolition Reports Log	15
12	Grid 3x3 Inspection Report	15
13	Progress Table	16
14	Selected Photos	17
15	Site Problems and Solutions	27
16	Annexes	28
16.1	Annex 1: Site Resources Logs.	29
	▪ 1.1 Daily Plant – Equipment Log & Charts	30
	▪ 1.2 Daily Manpower Log & Charts	34
	▪ 1.3 Percentage of Completion (Progress Charts)	38
	Engineer Notes	56
	▪ 1.4 Log of Activities (Completed & In-Progress)	57
	▪ 1.5 Cash-Flow Charts	59
16.2	Annex 2: Correspondence Logs.	62
	▪ 2.1 Incoming Letters	63
	▪ 2.2 Outgoing Letters	73
16.3	Annex 3: Submittals Logs.	74
	▪ 3.1 Architectural Submittals	75

	▪ 3.1.1 Arch. Shop Drawings	76
	▪ 3.1.2 Arch. Materials Submittal	
	▪ 3.2 Electrical Submittals	77
	▪ 3.2.1 Elect. Shop Drawings	78
	▪ 3.2.2 Elect. Materials Submittal	79
	▪ 3.3 Mechanical Submittals	80
	▪ 3.3.1 Mech. Shop Drawings	81
	▪ 3.3.2 Mech. Materials Submittal	82
	▪ 3.4 Civil Submittals	84
	▪ 3.4.1 Civil Shop Drawings	85
	▪ 3.4.2 Civil Materials Submittal	
16.4	Annex 4: Site Visit Reports & Meetings	90
	▪ 4.1 Coordination & Progress Meetings	91
	▪ 4.2 Site Visits	97
16.5	Annex 5: RFI Tracking Log.	105
	▪ 5.1 Designer	106
	▪ 5.2 Contractor	107
16.6	Annex 6: Lab-Tests Results Tracking Log	108
16.7	Annex 7: Mobilization Tracking Log	117
16.8	Annex 8: Non-Conformance Reports Tracking Log	120
16.9	Annex 9: Materials Submittals	122
	▪ 9.1 Architectural Submittals	123
	▪ 9.2 Electrical Submittals	127
	▪ 9.3 Mechanical Submittals	131
	▪ Summary of Submitted Materials	138
16.10	Annex 10: Obstacles Log (Site Obstacles)	139
17	List of Tables & Figures	141
	▪ Tables	141
	▪ Figures	142

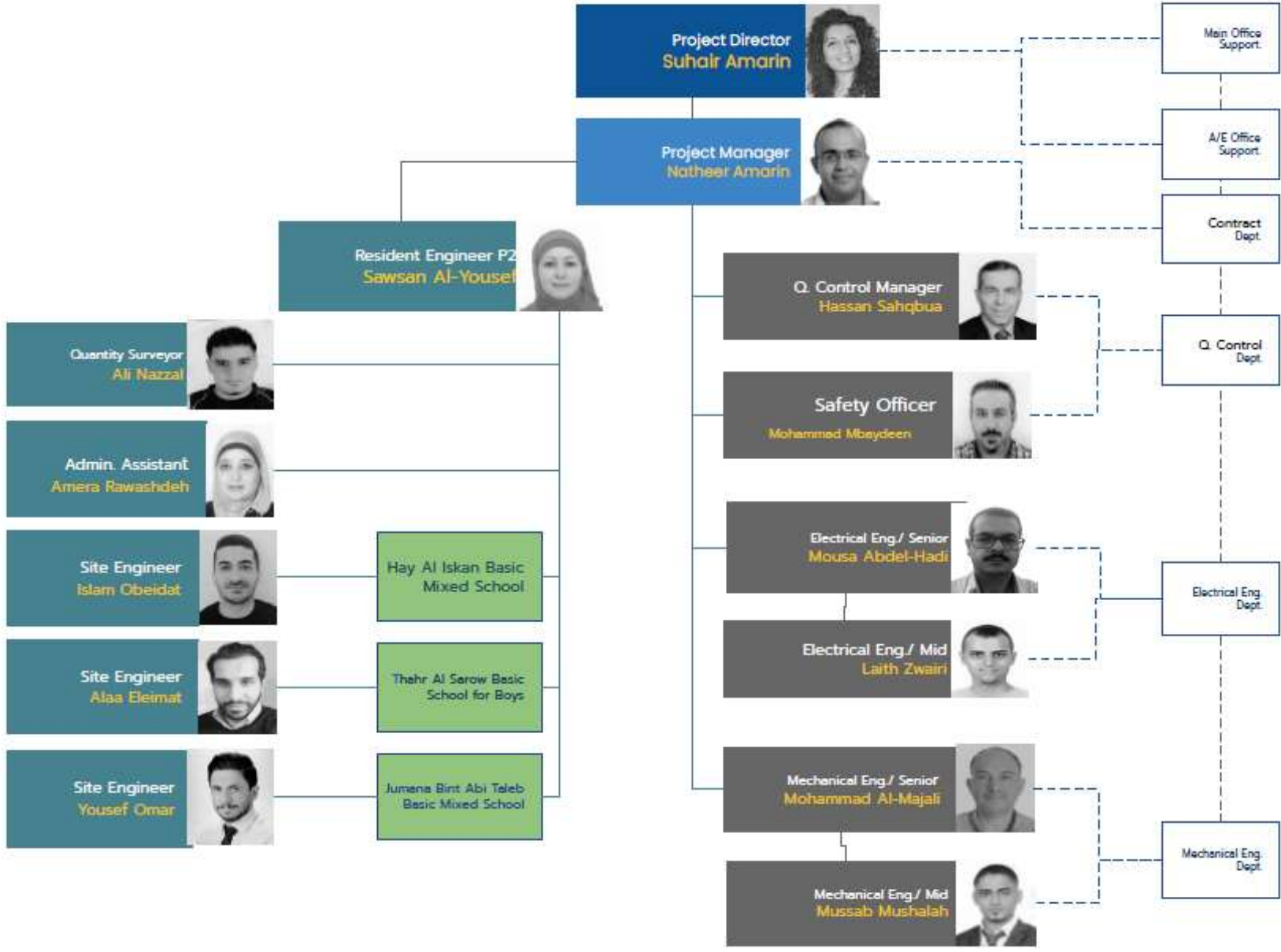
Project Particulars

Contract Name:	School for Knowledge Economy Project (SKEP) Phase III – Package (2)
Owner:	Ministry of Education (MOE)
Employer:	Ministry of Public Works & Housing (MPWH)
Funded By:	United States Agency for International Development (USAID)
Consultant:	Wahib Medanat Consultant Engineers
Project Management:	Trigon Associates (CMTO)
Contractor:	Dijlah Establishment Constr. Contracting
Contract No.:	10/2019/USAID/SKEP/3/2
Commencement Date:	21/10/2020
Time for Substantial Completion of the Work:	Thahr Al-Sarow Basic School for Boys- Jerash: 450 Days Jumana Bint Abi-Taleb Basic Mixed School- Amman: 450 Days Hay Al Iskan Basic Mixed School – Jerash : 450 Days
Time to Complete the Work Including Punch List Items:	Within 14 Calendar days for each School from the date of taking over committee inspection
Contract Amount at Award:	8,314,983.735 JOD
Amount of Liquidated Damages:	Thahr Al Sarow Basic School for Boys- Jerash: 2000 JOD/ Day but not to exceed 15% of total amount for the School Jumana Bint Abi Taleb Basic Mixed School- Amman: 200 JOD/ Day but not to exceed 15% of total amount for the School Hay Al Iskan Basic Mixed School- Jerash: 2000 JOD/ Day but not to exceed 15% of the total amount for the School
Defects Liability Period:	(730) Calendar Days for all Civil & Electromechanical works from the date of Substantial Completion for each school including the maintenance of plantation works
Maintenance Guarantee for Defects Liability Period:	5% of the final Contract Sum

Percentage of Retention from Interim Payment Certificate:	10% of each payment
Limit of Retention Money:	5% of Contract Sum as amended
Period of Time for Payment to be made after Certification by the Engineer:	60 Calendar Days
Minimum Amount of Interim Payment Certificate:	JOD 300,000 (Three hundred thousand Jordanian Dinar) for all schools under the Package
Payment for Imported Materials	40% upon receipt of approved bill of lading and another 20% when stored on site to the Engineer's approval
Payment for Local Materials and Equipment	60% and restricted to cement and reinforcing steel when stored on site to the Engineer's approval.



SKEP III Package 1,2
Organization Chart
Project Staff



Executive Summary

The Ministry of Education represented by the Ministry of Public Works & Housing has received a grant from USAID to finance the construction of:

School for Knowledge Economy Project (SKEP) – Phase III – Package (2)

The package consists of construction of three (3) Schools at different locations, two schools in Jerash and one School in Amman.

The project consists of construction of new classrooms, computer labs, laboratories, public utilities...etc., and site works for group of schools as shown in the Tender Documents, the Schools are:

- **Thahr Al-Sarow Basic School for Boys – Jerash**
The project consists of five floors building, with a total approximate area of 4615 m² in addition to site works as deemed in the drawings and BOQ.
- **Jumana Bint Abi Taleb Basic Mixed School – Amman**
The project consists of five floors building, with total approximate are of 5460 m² in addition to site works a deemed in the drawings and BOQ.
- **Hay Al-Iskan Basic School Mixed School – Jerash**
The project consists of five floors building, with total approximate area of 5420 m² in addition to site works as deemed in the drawings and BOQ.

Hereunder is a table showing the main progress information about the project:

No.	Object	Information
1.	Time Elapsed	72 Days out of 450 = 16.0 % Since the Commencement Date of the Contractor is on 21st October 2020 .
2.	Contract Value (JOD)	8,314,983.735 JOD
3.	Payments	10 % - First Part of Mobilization Payment = 831,498.3735 JOD
4.	Mobilization %	100 %
5.	Construction %	6.63 % (average for 3 schools)
6.	Guarantees	10 % Performance Guarantee= 831,498.3735 JOD

(Table 1. Main Progress Information)

Summary of Activities

Thahr Al Sarow Basic School for Boys- Jerash

- Excavation work in the building.
- Completing 50% of blinding work.
- Retaining the boundary wall.

Jumana Bint Abi Taleb Basic Mixed School- Amman

The activities in site went as follows:

- Completing 75% of foundation excavation.
- Blinding for boundary walls (BW1, BW4).
- Blinding for the basement and the external basement walls.
- Pouring boundary walls foundation (BW1, BW4- part1).
- Pouring boundary wall (BW1).
- Apply cold fluid for blinding (basement and boundary walls).
- Apply isolation layers behind wall.
- Pouring boundary walls foundation (BW4- part 2).
- Pouring blinding for main building, boundary wall (BW3).

Hay Al Iskan Basic Mixed School- Jerash

- Finishing the excavation work for the building and boundary wall no. (1) and (2).
- Casting concrete for the blinding of building and boundary wall no. (1) and (2).
- Steel Reinforcement and Reinforced Concrete for Foundation of boundary wall (1) and (2).

Meetings and Site Visits Logs

Coordination and Progress Meetings

Coordination & Progress Meetings				
No.	Date	Location	Parties	Agenda
1	08/12/2020	Thahr Al Sarow Basic School for Boys- Jerash	<ul style="list-style-type: none"> ▪ USAID ▪ TRIGON ▪ Wahib Medanat ▪ Dijlah Est. 	<ul style="list-style-type: none"> ▪ Sub-Contractors List ▪ Shoring System ▪ Status of Mobilization ▪ Materials Submission ▪ Variation Order, Claims & Time Extensions ▪ Contractor Work Schedule

(Table 2. Coordination & Progress Meetings)

Site Visits

Site Visits				
No.	Date	Location	Parties	Agenda
1	08/12/2020	Hai Al Iskan Basic Mixed School- Jerash	<ul style="list-style-type: none"> ▪ USAID ▪ CMTO ▪ Wahib Medanat ▪ Dijlah Est. Const. Contr. 	Execution Works going on in the Shoring System and Excavation Works
2	10/12/2020	Jumana Bint Abi Taleb Basic Mixed School- Amman	<ul style="list-style-type: none"> ▪ MPWH ▪ Wahib Medanat 	Discussing the actual status of the existing North-East Boundary Wall (Mbaret Um Al Hussein) which should be demolished according to design drawings
3	15/12/2020	Hay Al Iskan Basic Mixed School- Jerash	<ul style="list-style-type: none"> ▪ Engineers Rep. 	<ul style="list-style-type: none"> ▪ Follow up the execution of the shoring system. ▪ Follow up the excavation works. ▪ Discussing some safety issues.
4	15/12/2020	Thahr Al Sarow Basic School for Boys- Jerash	<ul style="list-style-type: none"> ▪ Engineers Rep 	<ul style="list-style-type: none"> ▪ Follow up the progress of the boundary wall.

				<ul style="list-style-type: none"> ▪ Discussing the additional quantities of the relocated water tank. ▪ Discussing the requested time extension (35 days)
5	21/12/2020	Jumana Bint Abi Taleb Basic Mixed School- Amman	▪ Engineers Rep	<ul style="list-style-type: none"> ▪ Follow up the progress of the boundary walls. ▪ Discussing the issue of the drainage of the concrete water tank. ▪ Discussing the Contractor's Proposal regarding the execution of the Mock-Up rooms.
6	23/12/2020	Jumana Bint Abi Taleb Basic Mixed School- Amman	▪ CMTO	Follow-Up Execution of Boundary Walls/Discussion cancellation of the Septic Tank (V.O.)

(Table 3. Site Visits)

Correspondences Logs

Official Letters		
Number of Incoming Letters	Number of Outgoing Letters	Notes
93	98	

(Table 4. Official Letters)

Submittals Logs

Shop Drawing Log

Shop-Drawings				
Submittal	Arch.	Civil	Electrical	Mechanical
	No.	No.	No.	No.
Total	0	97	4	2
Submitted this month	0	59	3	1
Submitted	-	59	3	1
Approved	-	7	1	-
Approved as Noted	-	20	-	-
Resubmit	-	14	2	-
Reject	-	17	-	1
Under Revision	-	1	-	-
Remaining	-			

(Table 5. Submittals Log- Shop Drawings)

Submittals Logs

Materials Log

Material Submittals				
Submittal	Arch.	Civil	Electrical	Mechanical
	No.	No.	No.	No.
Total	15	0	23	30
Submitted this Month	11	-	15	22
Approved	3	-	4	-
Approved as Noted	1	-	2	1
Resubmit	3	-	5	17
Reject	4	-	3	4
Under Revision	-	-	1	-
Remaining				

(Table 6. Submittals Log- Material Submittals)

Lab-Tests Results Log

Lab-Test Reports			
Number of Reports	School Name	Test Results %	
		Pass	Fail
-	Thahr Al Sarow Basic School Boys- Jerash	-	-
2	Jumana Bint Abi Taleb Basic Mixed School- Amman	100%	-
2	Hay Al Iskan Basic Mixed School- Jerash	100%	-

(Table 7. Lab-Tests Results Log)

Demolition Reports Log

Demolition Log			
No.	School Name	Location	Demolition Works Status
1	Thahr Al Sarow Basic School for Boys	Jerash	-
2	Jumana Bint Abi Taleb Basic Mixed School	Amman	-
3	Hay Al Iskan Basic Mixed School	Jerash	-

(Table 8. Demolition Log)

Grid 3X3 Inspection Report

Grid Inspection Report					
No.	Contractor	School Name	Inspected	Status	Date of Approval
1	Dijlah Est. Contr. Const.	Thahr Al Sarow Basic School for Boys -Jerash	Yes	Approved	11/10/2020
2		Jumana Bint Abi Taleb Basic Mixed School - Amman	Yes	Approved	11/10/2020
3		Hay Al Iskan Basic Mixed School - Jerash	Yes	Approved	11/10/2020

(Table 9. Grid 3x3 Inspection Report)

Progress Table

Progress Table						
No	School Name	Project Duration (Days)	Time Elapsed (Days)	Completion %		
				Planned	Actual	Progress (Actual-Planned)
1	Thahr Al Sarow Basic School for Boys -Jerash	450 Days	72 Days	10.50%	6.06%	-4.44%
2	Jumana Bint Abi Taleb Basic Mixed School - Amman	450 Days	72 Days	10.50%	6.69%	-3.81%
3	Hay Al Iskan Basic Mixed School - Jerash	450 Days	72 Days	10.50%	6.06%	-4.44%

(Table 10. Progress Table)

Selected Photos

- Thahr Al Sarow Basic School for Boys- Jerash
- Jumana Bint Abi Taleb Basic Mixed School- Amman
- Hay Al Iskan Basic Mixed School- Jerash



Thahr Al
Sarow Basic
School for
Boys- Jerash

15/12/2020



23/12/2020



26/12/2020



31/12/2020

Jumana Bint Abi
Taleb Basic
Mixed School-
Amman



01/12/2020



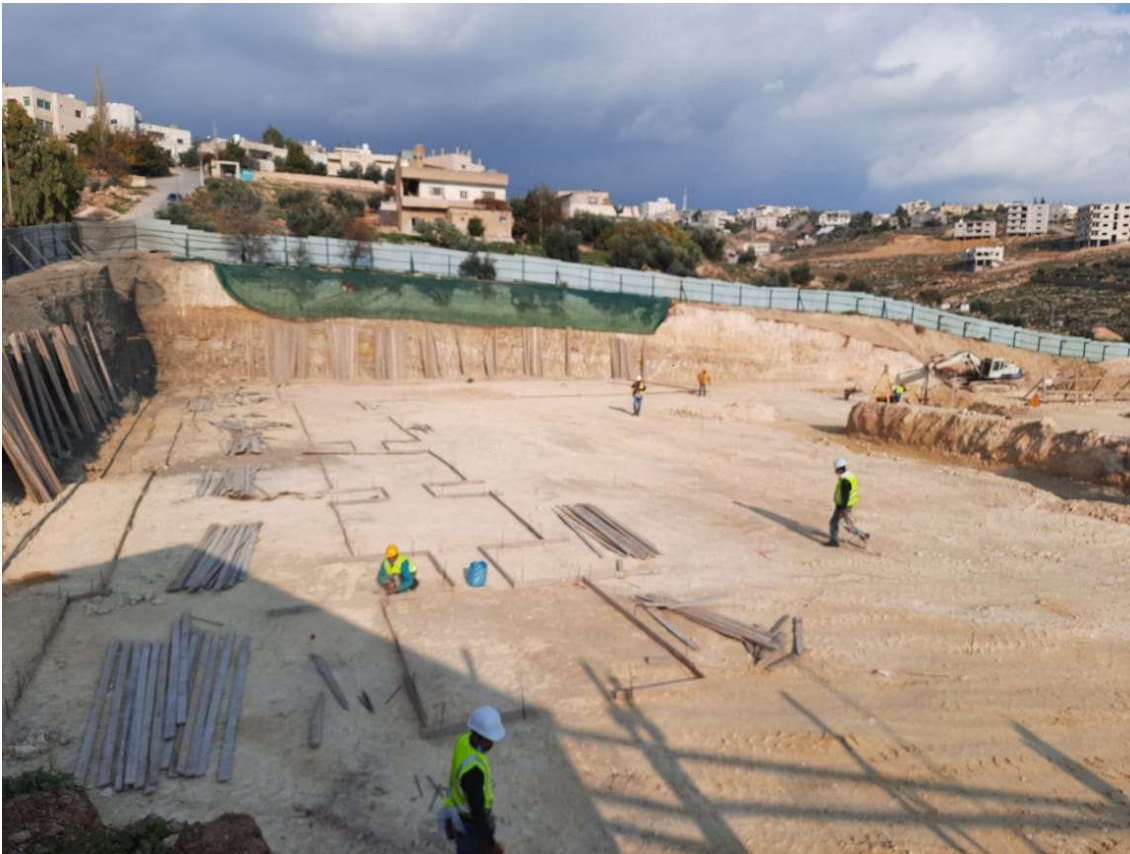
01/12/2020



30/12/2020



31/12/2020



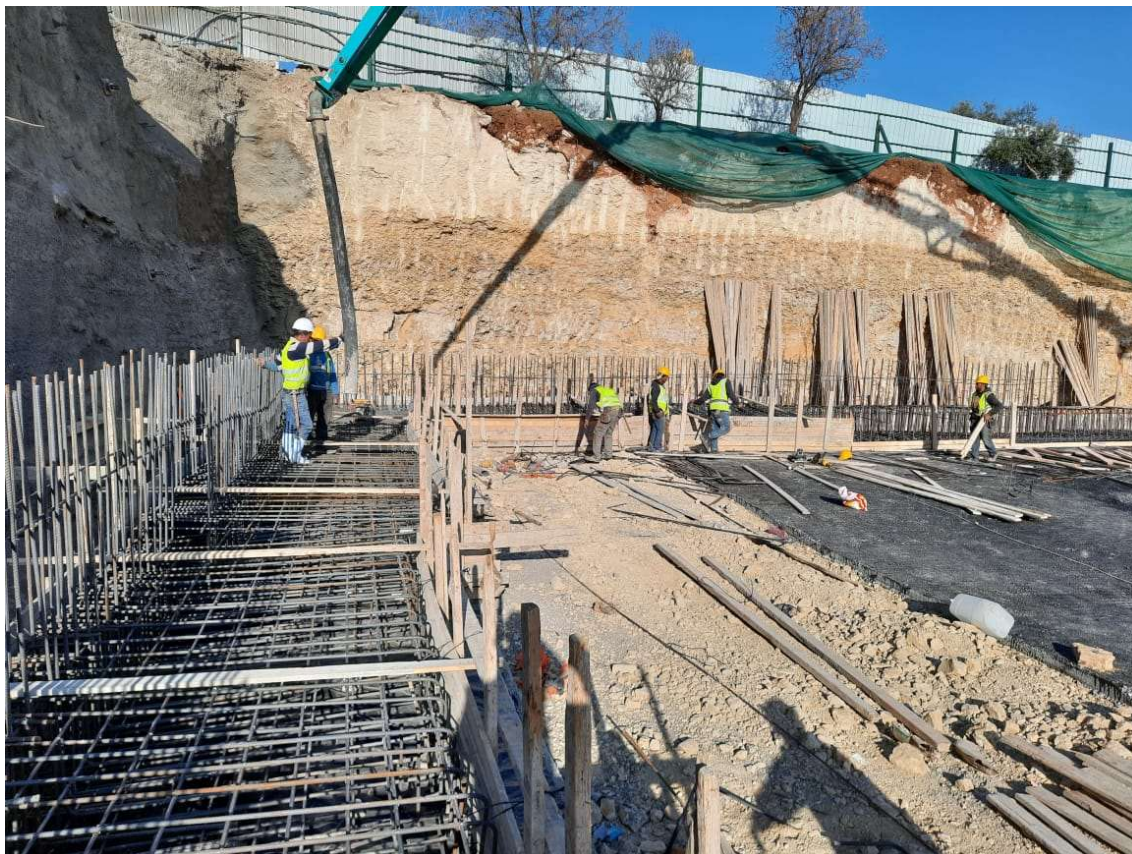
23/12/2020



26/12/2020



28/12/2020



29/12/2020

Site Problems and Solutions

Hay Al Iskan Basic Mixed School- Jerash:

Creating and executing a shoring system for the boundary wall at the border adjoining the street around the site. The said action made the surrounding areas, and community more safe and also for the workers inside the site.

A cavity was discovered during the excavation work and as a result was removed. The process was coordinated with a specialized geotechnical laboratory who made an inspection to the site and insured reaching the ideal formation level. A technical report was issued by the laboratory confirming that no more cavities are existing within our foundation level.

Thahr Al Sarow Basic School for Boys- Jerash:

Vertical excavation for the plot boundary wall: the schedule for the boundary was modified and approved to accelerate the work progress in the boundary. As a result of this, the progress in the said wall is ahead by seven days.

Jumana Bint Abi Taleb Basic Mixed School- Amman:

The existing boundary wall for the neighbor (Mabart Um Al-Hussein) is to be demolished and substituted by new boundary as per contracts documents. Removing the said existing wall might cause the removal of the adjacent trees inside the plot of Mabart Um Al-Hussein. Therefore, we solved the said issue by starting building the new wall adjacent to the existing wall without removing the said old wall and the trees.

Annexes

- **Annex 1: Site Resources Log**
 - 1.1 Daily Plant & Equipment Log
 - 1.2 Daily Manpower Log
 - 1.3 Percentage of Completion (Progress Charts)
 - 1.4 Log of Activities (Completed & In-Progress)
 - 1.5 Cash-Flow Chart

- **Annex 2: Correspondence Log**
 - 2.1 Incoming Letters
 - 2.2 Outgoing Letters

- **Annex 3: Submittals Log**
 - 3.1 Architectural Submittals
 - 3.1.1 Arch. Shop Drawings
 - 3.1.2 Arch. Materials Submittal
 - 3.2 Electrical Submittals
 - 3.2.1 Elect. Shop Drawings
 - 3.2.2 Elect. Materials Submittal
 - 3.3 Mechanical Submittals
 - 3.3.1 Mech. Shop Drawings
 - 3.3.2 Mech. Materials Submittal
 - 3.4 Civil Submittals
 - 3.4.1: Civil Shop Drawings
 - 3.4.2: Civil Materials Submittal

- **Annex 4: Site Visits Report & Meetings**
 - 4.1 Meetings
 - 4.2 Site Visits

- **Annex 5: RFI Tracking Log**
 - 5.1 RFIs – Designer
 - 5.2 RFIs – Contractor

- **Annex 6: Lab-Tests**
 - 6.1 Tracking Log
 - 6.2 Excerpts of Sampling & Testing

- **Annex 7: Mobilization Tracking Log**
- **Annex 8: Non-Conformance Report Tracking Log**
- **Annex 9: Materials Submittals**
- **Annex 10: Obstacles Log**

Annex -1-

Site Resources Logs

1.1 Daily Plant & Equipment Log

1.2 Daily Manpower Log

1.3 Percentage of Completion
(Progress Charts)

1.4 Log of Activities
(Completed & In-Progress)

1.5 Cash-Flow Charts

Annex -1-

1.1 Daily Plant – Equipment Log

1.1 Daily Plant & Equipment Log

Wahib Medanat Consultant Engineers

Thahr Al Sarow Basic School for Boys- Jerash

Daily Plant & Equipment Log December 2020																															
Equipment Name	1	2	3	4	5	6	7	8	9	10	11	12	13	14	15	16	17	18	19	20	21	22	23	24	25	26	27	28	29	30	31
Excavator	1	1	1		1	1	1	1	1	1		1	1	1	1	0	0		1	1	1	0	0	0		0	0	0	0	0	0
Shovel Loader	1	1	1		1	1	1	1	1	1		1	1	1	1	1	1		1	1	1	1	1	1		1	1	1	1	1	1
Dump Truck	2	2	2		0	2	0	2	2	2		0	0	0	2	0	0		1	1	1	0	0	0		0	0	0	0	0	0
Steel Cutting, Bending Machine	1	1	1		1	1	1	1	1	1		1	1	1	1	1	1		1	1	1	1	1	1		1	1	1	1	1	1
Surveying Instrument	1	1	1		1	1	1	1	1	1		1	1	1	1	1	1		1	1	1	1	1	1		1	1	1	1	1	1

(Table 11-1. Daily Plant & Equipment Log- Thahr Al Sarow Basic School for Boys)

1.1 Daily Plant & Equipment Log

Wahib Medanat Consultant Engineers

Jumana Bint Abi Taleb Basic Mixed School- Amman

Daily Plant & Equipment Log December 2020																															
Equipment Name	1	2	3	4	5	6	7	8	9	10	11	12	13	14	15	16	17	18	19	20	21	22	23	24	25	26	27	28	29	30	31
Excavator	1	1	1		2	2	2	1	1	1		1	1	1	1	1	1		1	1	1	1	0	0	0	0	0	0	0	0	0
Tipper	0	1	1		8	8	8	8	8	8		8	8	8	8	8	8		8	8	8	8	0	0	0	0	0	0	0	0	0
Loader	1	1	1		2	2	2	2	2	2		2	2	2	2	2	2		2	2	2	2	0	0	0	0	0	0	0	0	0

(Table 11-2. Daily Plant & Equipment Log- Jumana Bint Abi Taleb Basic Mixed School)

1.1 Daily Plant & Equipment Log

Wahib Medanat Consultant Engineers

Hay Al Iskan Basic Mixed School- Jerash

Daily Plant & Equipment Log December 2020																																
Equipment Name	1	2	3	4	5	6	7	8	9	10	11	12	13	14	15	16	17	18	19	20	21	22	23	24	25	26	27	28	29	30	31	
Loader	0	0	0		0	1	1	1	1	1		1	1	1	1	1	1		1	1	1	1	1	1		1	0	0	0	0	0	
Jackhammer	0	0	0		0	1	1	1	1	1		1	1	1	2	2	2		2	2	2	2	2	2		1	0	0	0	0	0	
Dump truck	0	0	0		0	1	2	2	2	2		2	4	4	4	2	2		2	2	2	2	2	1		2	0	0	0	0	0	
Shoring machine	0	0	0		1	1	1	1	1	1		1	1	1	1	1	0		0	0	0	0	0	0		0	0	0	0	0	0	
Concrete mixer	0	0	0		0	0	0	0	0	0		0	0	0	0	0	0		0	0	0	0	4	0		3	0	2	6	0	5	
Concrete pump	0	0	0		0	0	0	0	0	0		0	0	0	0	0	0		0	0	0	0	1	0		1	0	1	1	0	1	

(Table 11-3. Daily Plant & Equipment Log- Hay Al Iskan Basic Mixed School)

Annex -1-

1.2 Daily Manpower Log & Charts

1.2 Daily Manpower Log

Wahib Medanat Consultant Engineers

Thahr Al Sarow Basic School for Boys- Jerash

Daily Manpower Log December 2020																															
Staff Members	1	2	3	4	5	6	7	8	9	10	11	12	13	14	15	16	17	18	19	20	21	22	23	24	25	26	27	28	29	30	31
Project Manager	1	1	1		1	1	1	1	1	1		1	1	1	1	1	1		1	1	1	1	1	1		1	1	1	1	1	1
Site Engineer	1	1	1		1	1	1	1	1	1		1	1	1	1	1	1		1	1	1	1	1	1		1	1	1	1	1	1
Quantity Surveyor	1	1	1		1	1	1	1	1	1		1	1	1	1	1	1		1	1	1	1	1	1		1	1	1	1	1	1
Planning Engineer	1	1	1		1	1	1	1	1	1		1	1	1	1	1	1		1	1	1	1	1	1		1	1	1	1	1	1
Mechanical Engineer	1	1	1		1	1	1	1	1	1		1	1	1	1	1	1		1	1	1	1	1	1		1	1	1	1	1	1
Safety Specialist	1	1	1		1	1	1	1	1	1		1	1	1	1	1	1		1	1	1	1	1	1		1	1	1	1	1	1
Surveyor	1	1	1		1	1	1	1	1	1		1	1	1	1	1	1		1	1	1	1	1	1		1	1	1	1	1	1
Safety Officer	1	1	1		1	1	1	1	1	1		1	1	1	1	1	1		1	1	1	1	1	1		1	1	1	1	1	1
Labor	4	4	4		4	4	4	4	4	4		4	7	7	13	7	7		12	12	12	12	12	16		16	16	16	16	16	16

(Table 12-1. Daily Manpower Log- Thahr Al Sarow Basic School for Boys)

1.2 Daily Manpower Log

Wahib Medanat Consultant Engineers

Jumana Bint Abi Taleb Basic Mixed School- Amman

Daily Manpower Log December 2020																															
Staff Members	1	2	3	4	5	6	7	8	9	10	11	12	13	14	15	16	17	18	19	20	21	22	23	24	25	26	27	28	29	30	31
Project Manager	1	1	1		1	1	1	1	1	1		1	1	1	1	1	1		1	1	1	1	1	1		1	1	1	1	1	1
Site Engineer	1	1	1		1	1	1	1	1	1		1	1	1	1	1	1		1	1	1	1	1	1		1	1	1	1	1	1
Quantity Surveyor	1	1	1		1	1	1	1	1	1		1	1	1	1	1	1		1	1	1	1	1	1		1	1	1	1	1	1
Planning Engineer	1	1	1		1	1	1	1	1	1		1	1	1	1	1	1		1	1	1	1	1	1		1	1	1	1	1	1
Mechanical Engineer	1	1	1		1	1	1	1	1	1		1	1	1	1	1	1		1	1	1	1	1	1		1	1	1	1	1	1
Safety Specialist	1	1	1		1	1	1	1	1	1		1	1	1	1	1	1		1	1	1	1	1	1		1	1	1	1	1	1
Surveyor	1	1	1		1	1	1	1	1	1		1	1	1	1	1	1		1	1	1	1	1	1		1	1	1	1	1	1
Safety Officer	1	1	1		1	1	1	1	1	1		1	1	1	1	1	1		1	1	1	1	1	1		1	1	1	1	1	1
Labor	2	2	2		2	2	2	2	10	10		10	10	10	10	10	10		12	12	12	12	14	14		17	17	17	17	17	17

(Table 12-2. Daily Manpower Log- Jumana Bint Abi Taleb Basic Mixed School)

1.2 Daily Manpower Log

Wahib Medanat Consultant Engineers

Hay Al Iskan Basic Mixed School- Jerash

Daily Manpower Log December 2020																															
Staff Members	1	2	3	4	5	6	7	8	9	10	11	12	13	14	15	16	17	18	19	20	21	22	23	24	25	26	27	28	29	30	31
Project Manager	1	1	1		1	1	1	1	1	0		1	0	1	0	1	0		1	1	1	1	1	0		0	0	0	0	0	0
Site Engineer	1	1	1		1	1	1	1	1	1		1	1	1	1	1	1		1	1	1	0	0	0		0	0	0	0	0	0
Quantity Surveyor	1	1	1		1	1	1	1	1	1		1	1	1	1	1	1		1	1	1	1	1	1		1	1	1	1	1	1
Electrical Engineer	0	0	0		0	0	0	0	0	0		0	0	0	0	0	0		0	0	1	0	0	0		0	0	0	0	0	0
Mechanical Engineer	0	0	0		0	0	0	0	0	0		0	0	0	0	0	0		0	1	0	0	0	0		0	0	0	0	1	1
Surveyor	0	0	0		0	0	0	0	0	0		0	0	0	0	0	0		1	0	1	1	1	1		0	1	1	0	0	0
Safety Officer	1	1	1		1	2	1	2	2	1		2	2	2	2	1	2		1	2	2	1	2	1		1	1	1	1	2	2
Forman	1	1	1		1	1	1	1	1	1		1	1	1	1	1	1		1	1	1	1	1	1		1	1	1	1	1	1
Driver	3	3	3		3	4	4	4	4	4		4	4	4	5	5	6		4	4	4	1	4	4		5	0	3	0	0	0
Labor	4	4	4		4	4	4	4	8	11		11	11	11	8	8	9		7	8	8	4	15	5		9	11	11	11	14	14

(Table 12-3. Daily Manpower Log- Hay Al Iskan Basic Mixed School)

Annex -1-

1.3 Percentage of Completion (Progress Charts)

Percentage of Completion

Medanat Consultant Engineers

Thahr Al Sarow Basic School for Boys- Jerash

III Progress

Contractor	Wahib Medanat Consultant Engineers				Rep No.	S3P2		
Client	Dijlah Est. Construction Co.				Tender No	10/2019/USAID/S		
Project	Thahr Al Sarow Basic Boys - Jerash				Package	Package 2		
Date	Tuesday	29	December	2020				
	Monthly Elapsed Time%	Monthly Scheduled %	Monthly Actual%	Comulative Elapsed Time%	Cumulative Scheduled %	Cumulative Actual %	Notes	
2020	2.44%	2.50%	2.00%	2.44%	2.50%	2.00%		
2020	6.67%	4.1%	2.79%	9.11%	6.60%	4.79%		
2020	6.89%	3.9%	1.27%	16.00%	10.50%	6.06%		
2021	6.89%	6.3%		22.89%	16.80%			
2021	6.22%	3.4%		29.11%	20.20%			
2021	6.89%	4.6%		36.00%	24.80%			
2021	6.67%	4.8%		42.67%	29.60%			
2021	6.89%	6.2%		49.56%	35.80%			
2021	6.67%	8.1%		56.22%	43.90%			
2021	6.89%	9.0%		63.11%	52.90%			
2021	6.89%	9.1%		70.00%	62.00%			
2021	6.67%	9.5%		76.67%	71.50%			

Percentage of Completion

Medanat Consultant Engineers

Jumana Bint Abi Taleb Basic Mixed School- Amman

III Progress

wahib medanat counsultant engineers				Rep No.	S3P2		
Dijlah Est. Construction Co.				Tender No	10/2019/USAID/SKEP/3/		
Jumana Bint Abi Taleb Basic Mixed -				Package	Package 2		
Date	Tuesday	29	December	2020			
	Monthly Elapsed Time%	Monthly Scheduled %	Monthly Actual%	Comulative Elapsed Time%	Cumulative Scheduled %	Cumulative Actual %	Notes
20	2.44%	2.50%	0.98%	2.44%	2.50%	0.98%	
20	6.67%	4.1%	2.05%	9.11%	6.60%	3.03%	
20	6.89%	3.9%	3.66%	16.00%	10.50%	6.69%	
1	6.89%	6.3%		22.89%	16.80%		
1	6.22%	3.4%		29.11%	20.20%		
1	6.89%	4.6%		36.00%	24.80%		
1	6.67%	4.8%		42.67%	29.60%		
1	6.89%	6.2%		49.56%	35.80%		
1	6.67%	8.1%		56.22%	43.90%		
1	6.89%	9.0%		63.11%	52.90%		
1	6.89%	9.1%		70.00%	62.00%		
1	6.67%	9.5%		76.67%	71.50%		
21	6.89%	7.8%		83.56%	79.30%		

Percentage of Completion

Wahib Medanat Consultant Engineers

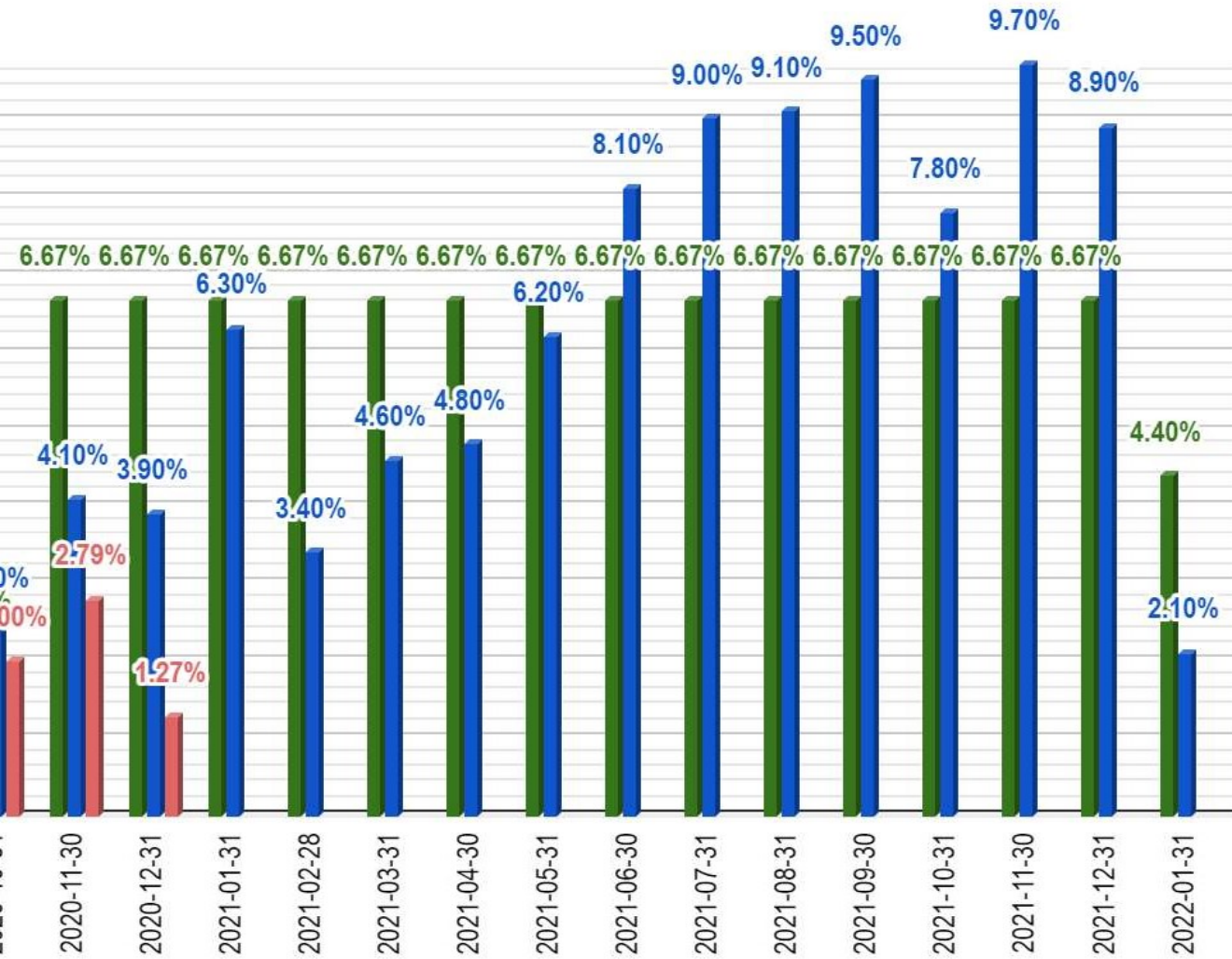
Hay Al Iskan Basic Mixed School- Jerash

III Progress

Contractor	Wahib Medanat Consultant Engineers				Rep No.	S3P2		
Client	Dijlah Est. Construction Co.				Tender No	10/2019/USAID/S		
Project	Hay Al Iskan Basic mixed - Jerash				Package	Package 2		
Date	Tuesday	29	December	2020				
	Monthly Elapsed Time%	Monthly Scheduled %	Monthly Actual%	Comulative Elapsed Time%	Cumulative Scheduled %	Cumulative Actual %	Notes	
2020	2.44%	2.50%	1.80%	2.44%	2.50%	1.80%		
2020	6.67%	4.1%	2.74%	9.11%	6.60%	4.54%		
2020	6.89%	3.9%	1.52%	16.00%	10.50%	6.06%		
2021	6.89%	6.3%		22.89%	16.80%			
2021	6.22%	3.4%		29.11%	20.20%			
2021	6.89%	4.6%		36.00%	24.80%			
2021	6.67%	4.8%		42.67%	29.60%			
2021	6.89%	6.2%		49.56%	35.80%			
2021	6.67%	8.1%		56.22%	43.90%			
2021	6.89%	9.0%		63.11%	52.90%			
2021	6.89%	9.1%		70.00%	62.00%			
2021	6.67%	9.5%		76.67%	71.50%			

Thahr Al Sarow Basic Boys - Jerash

Monthly Progress

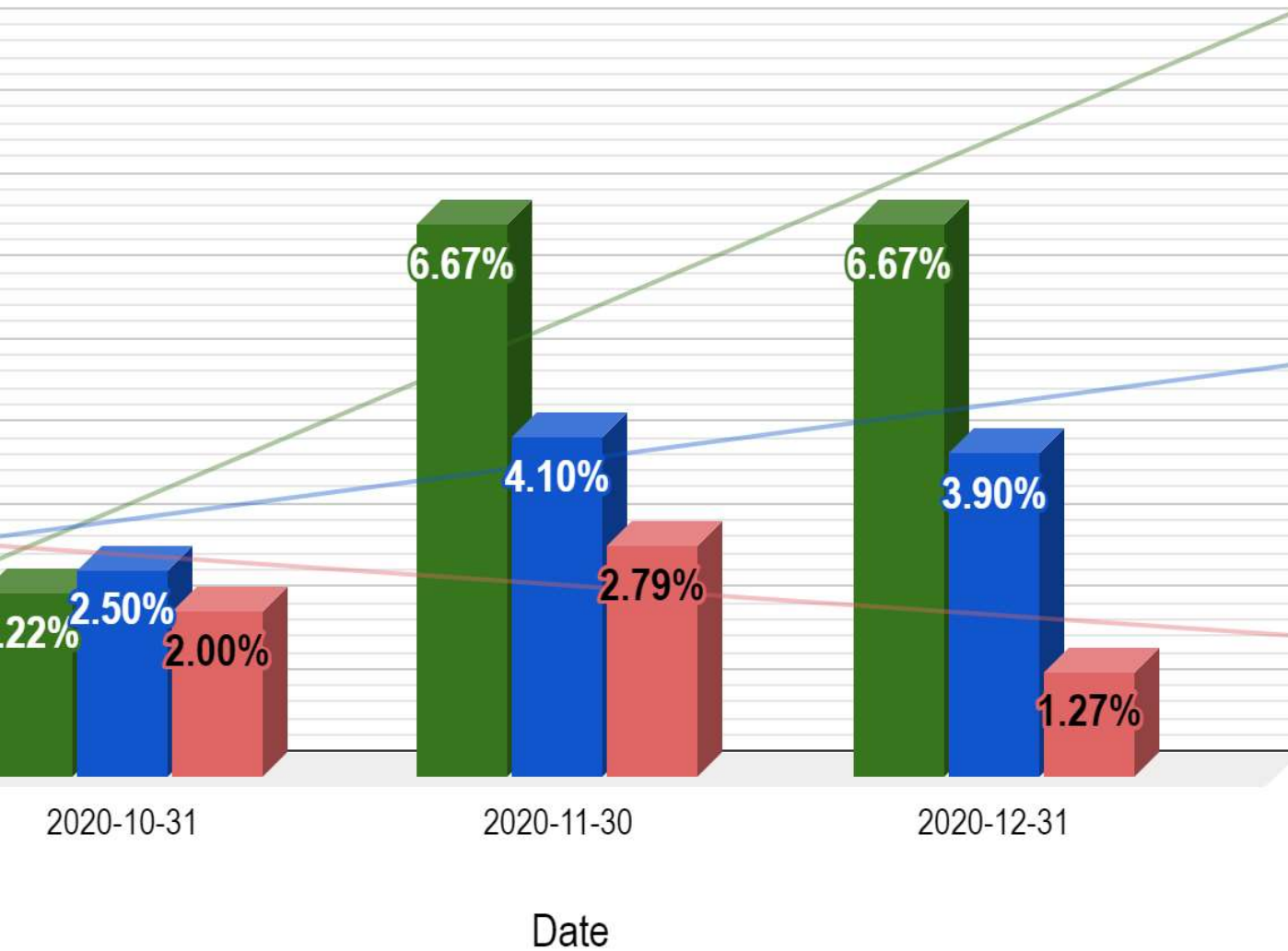


Date

Elapsed Time % Monthly Scheduled % Monthly Actual %

Thahr Al Sarow Basic Boys - Jerash

Monthly Progress

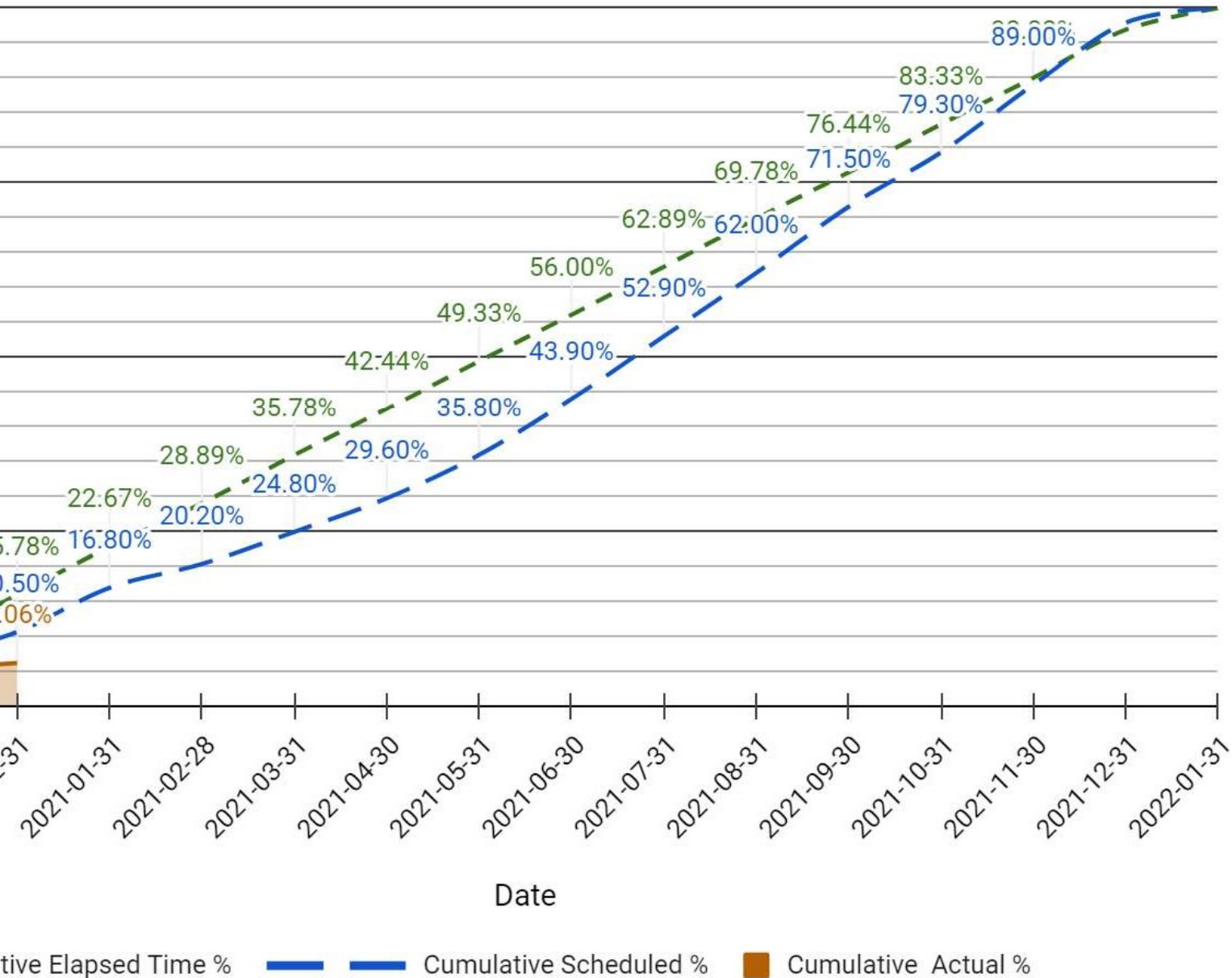


Monthly Elapsed Time % ■ Monthly Scheduled % ■ Monthly Actual %

(Figure 2. Percentage of Completion (Cumulative)-Thahr Al Sarow Basic School

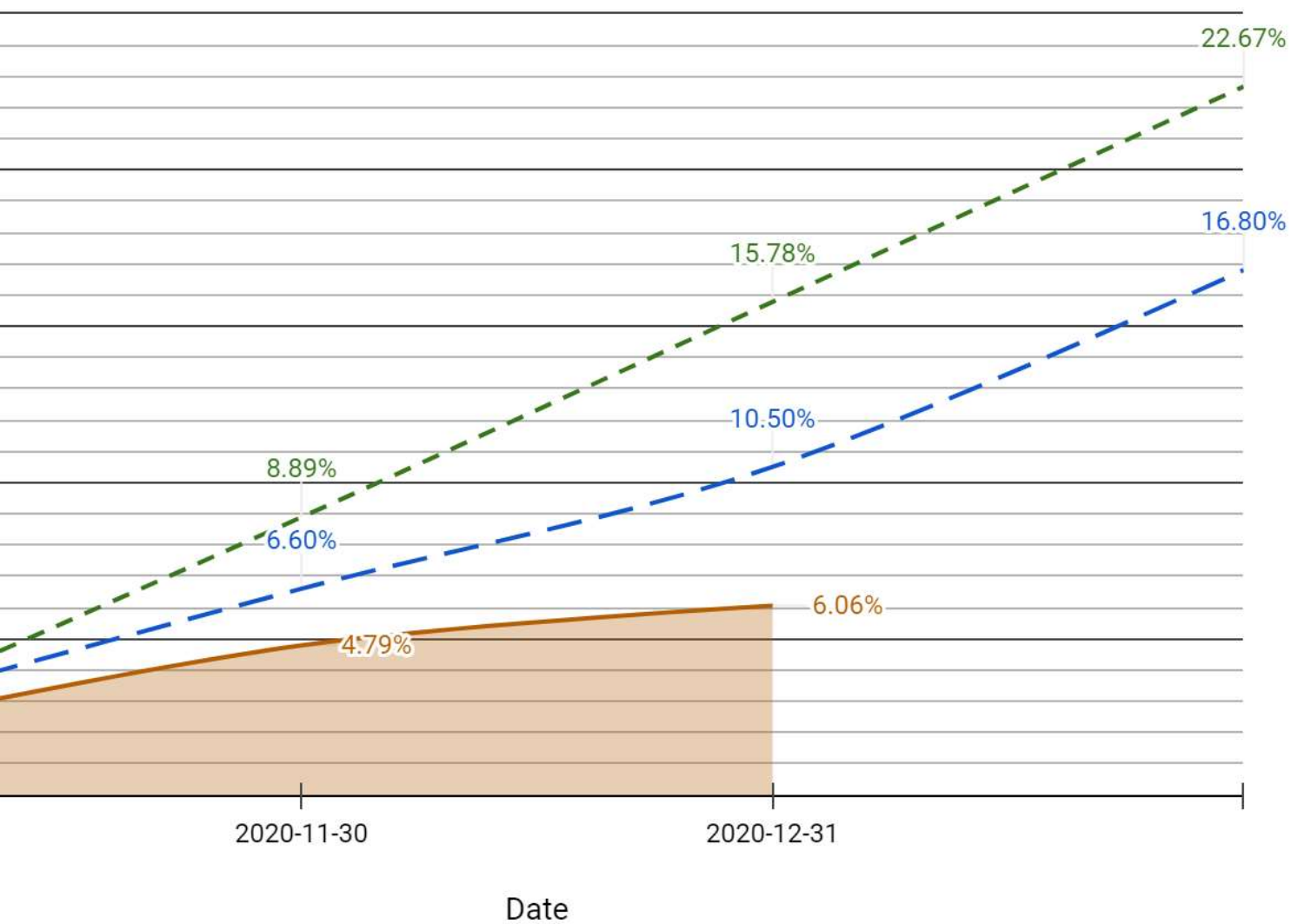
Thahr Al Sarow Basic Boys - Jerash

Cumulative Progress



Thahr Al Sarow Basic Boys - Jerash

Cumulative Progress



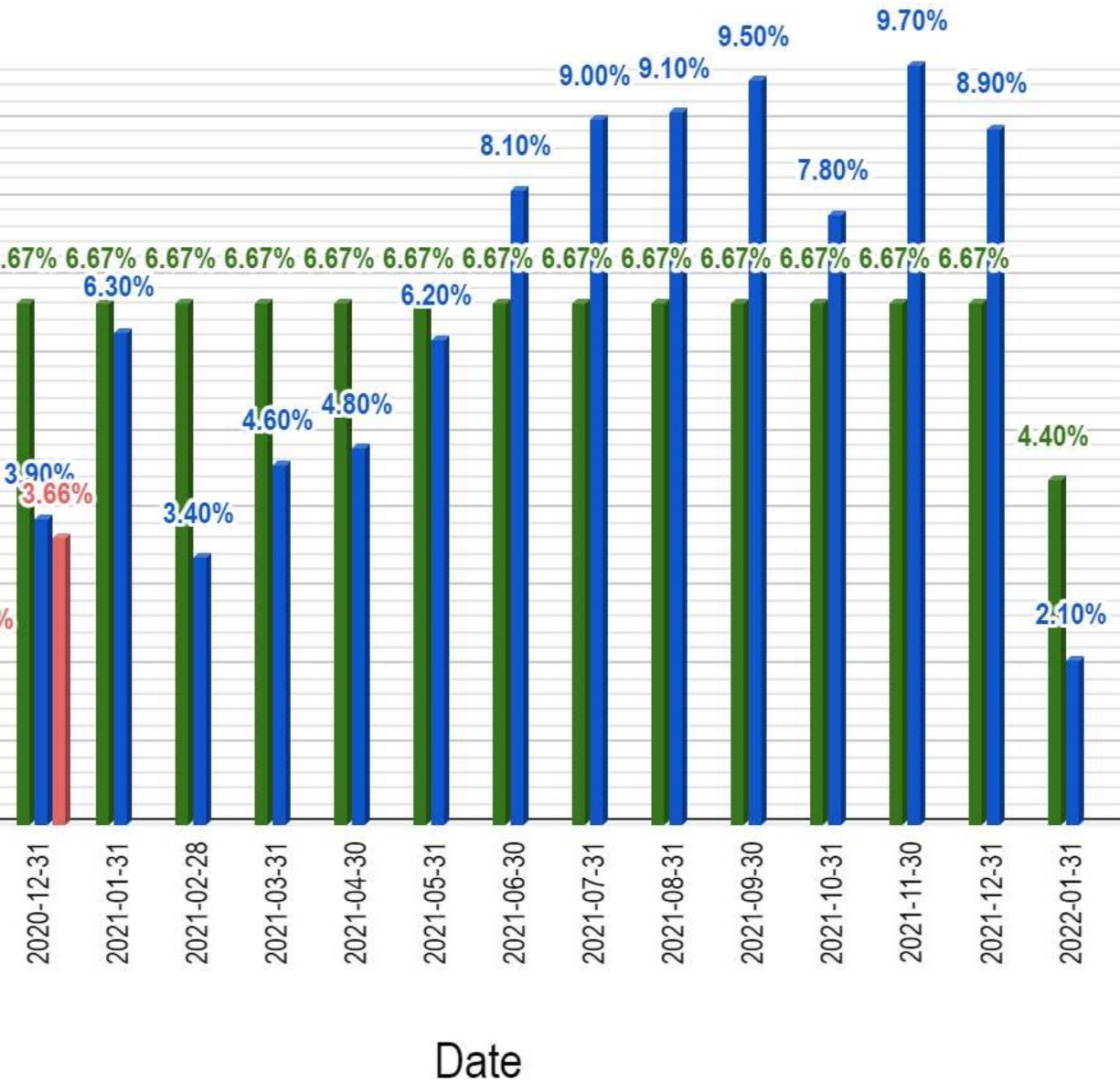
Cumulative Elapsed Time % Cumulative Scheduled % Cumulative Actual %

(Figure 4. Percentage of Completion (Cumulative)-Thahr Al Sarow Basic School

Mixed School- Amman

Jumana Bint Abi Taleb Basic Mixed - Marka

Monthly Progress

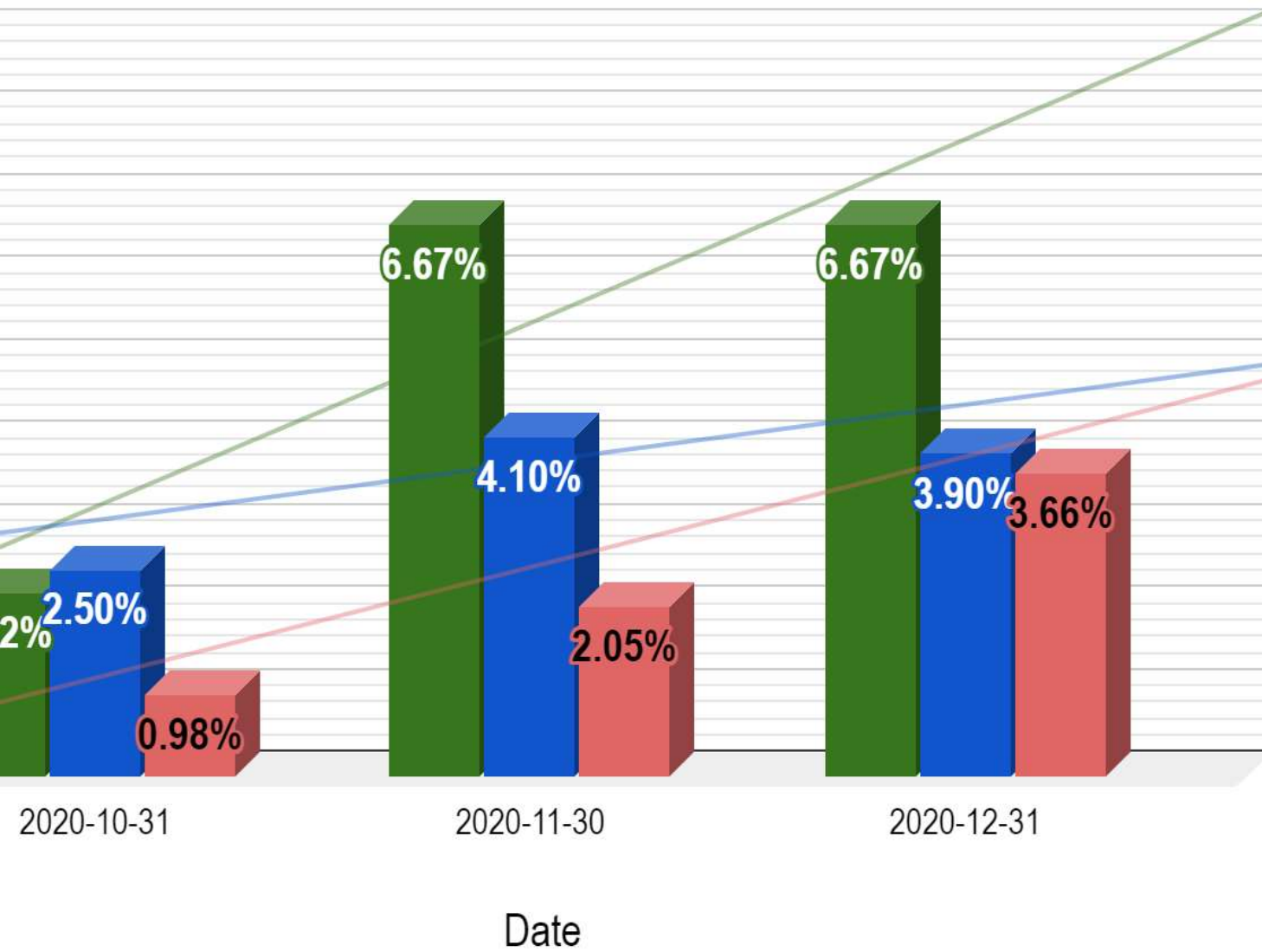


Monthly Time % ■ Monthly Scheduled % ■ Monthly Actual %

Mixed School- Amman

Jumana Bint Abi Taleb Basic Mixed - Marka

Monthly Progress

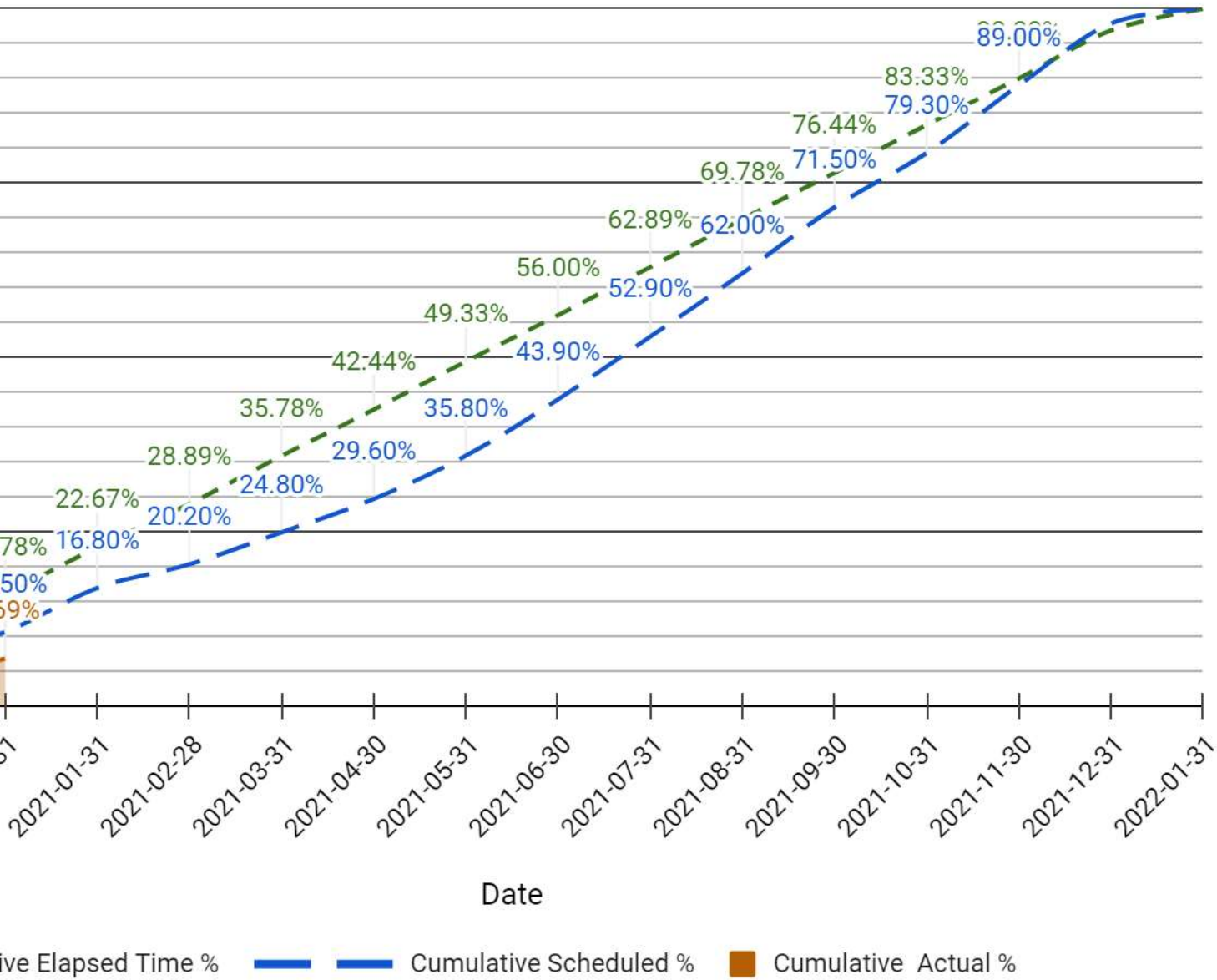


Monthly Elapsed Time % Monthly Scheduled % Monthly Actual %

Mixed School- Amman

Jumana Bint Abi Taleb Basic Mixed - Marka

Cumulative Progress

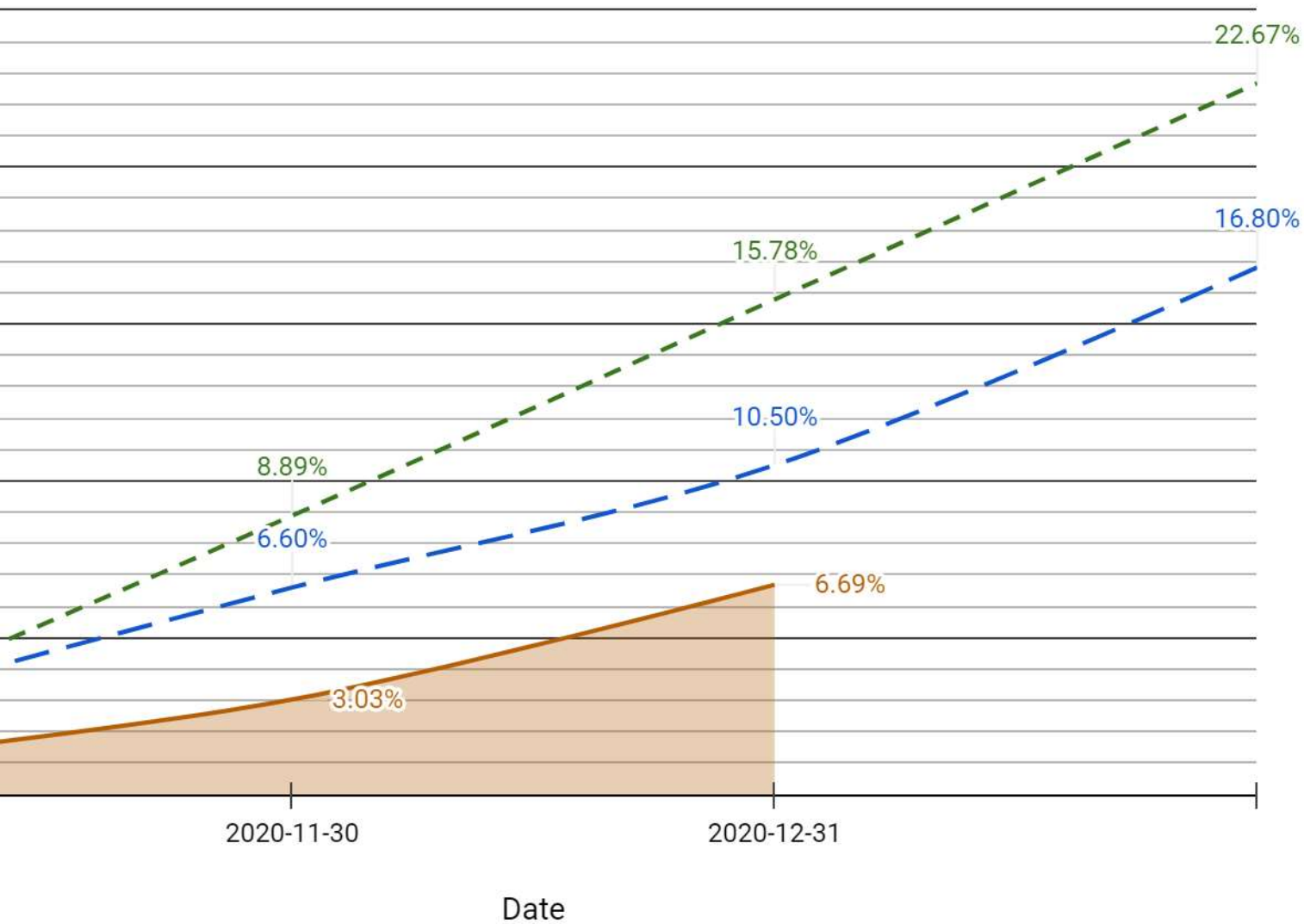


(Figure 7. Percentage of Completion (Cumulative)-Jumana Bint Abi Taleb Basic Mixed School)

Mixed School- Amman

Jumana Bint Abi Taleb Basic Mixed - Marka

Cumulative Progress

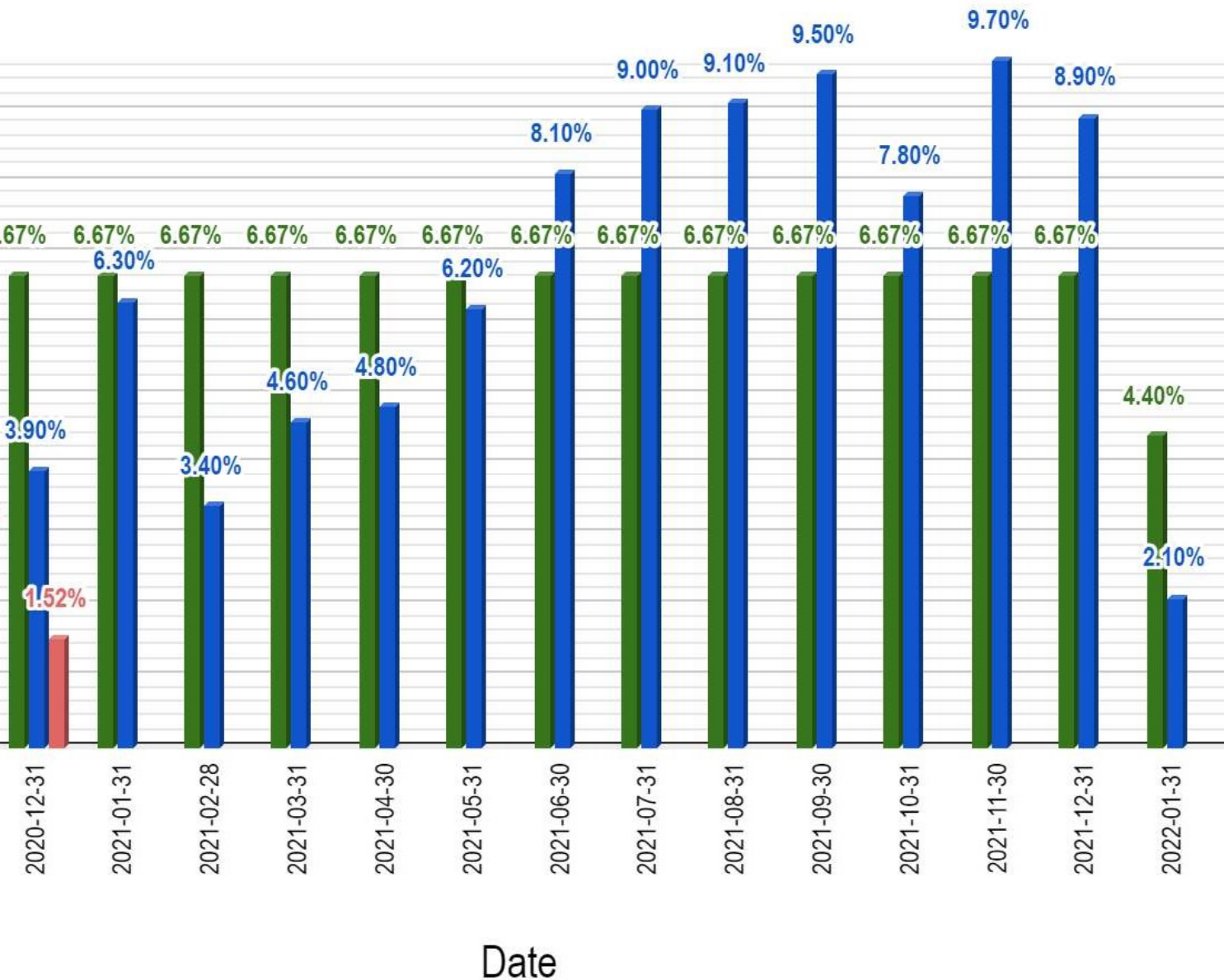


Cumulative Elapsed Time % Cumulative Scheduled % Cumulative Actual %

(Figure 8. Percentage of Completion (Cumulative)-Jumana Bint Abi Taleb Basic Mixed School)

Hay Al Iskan Basic mixed - Jerash

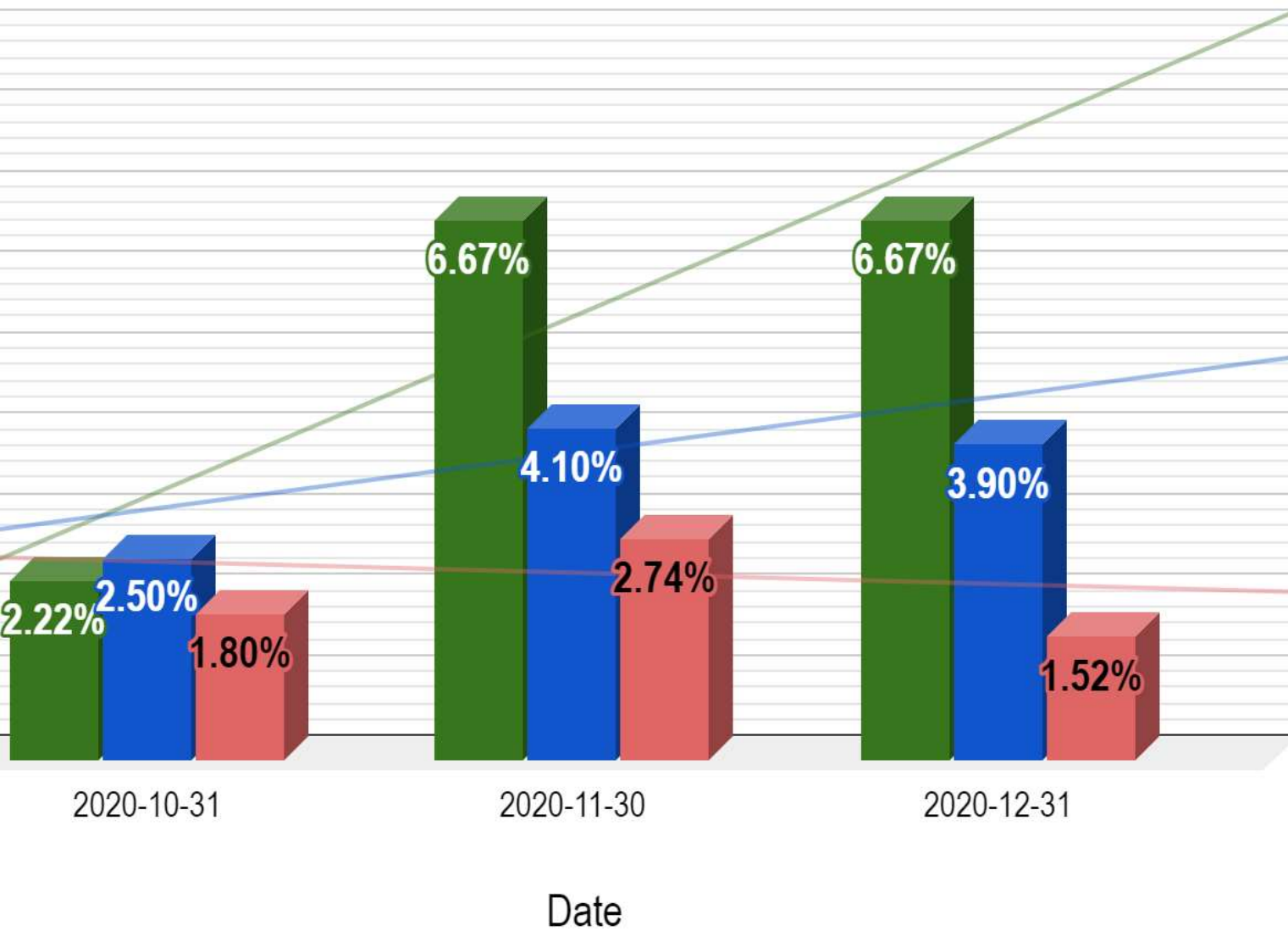
Monthly Progress



Elapsed Time % Monthly Scheduled % Monthly Actual %

Hay Al Iskan Basic mixed - Jerash

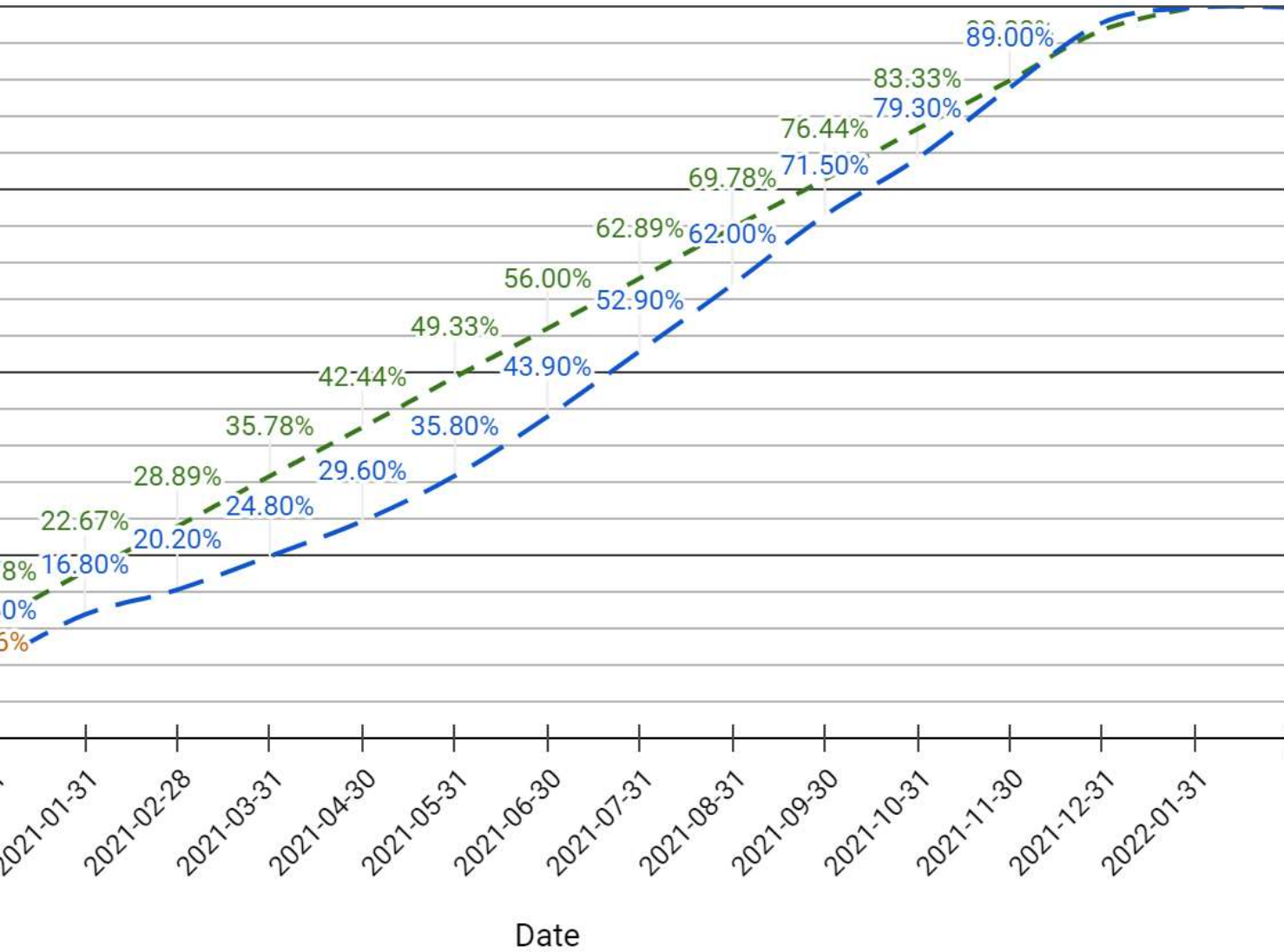
Monthly Progress



Monthly Elapsed Time % Monthly Scheduled % Monthly Actual %

Hay Al Iskan Basic mixed - Jerash

Cumulative Progress

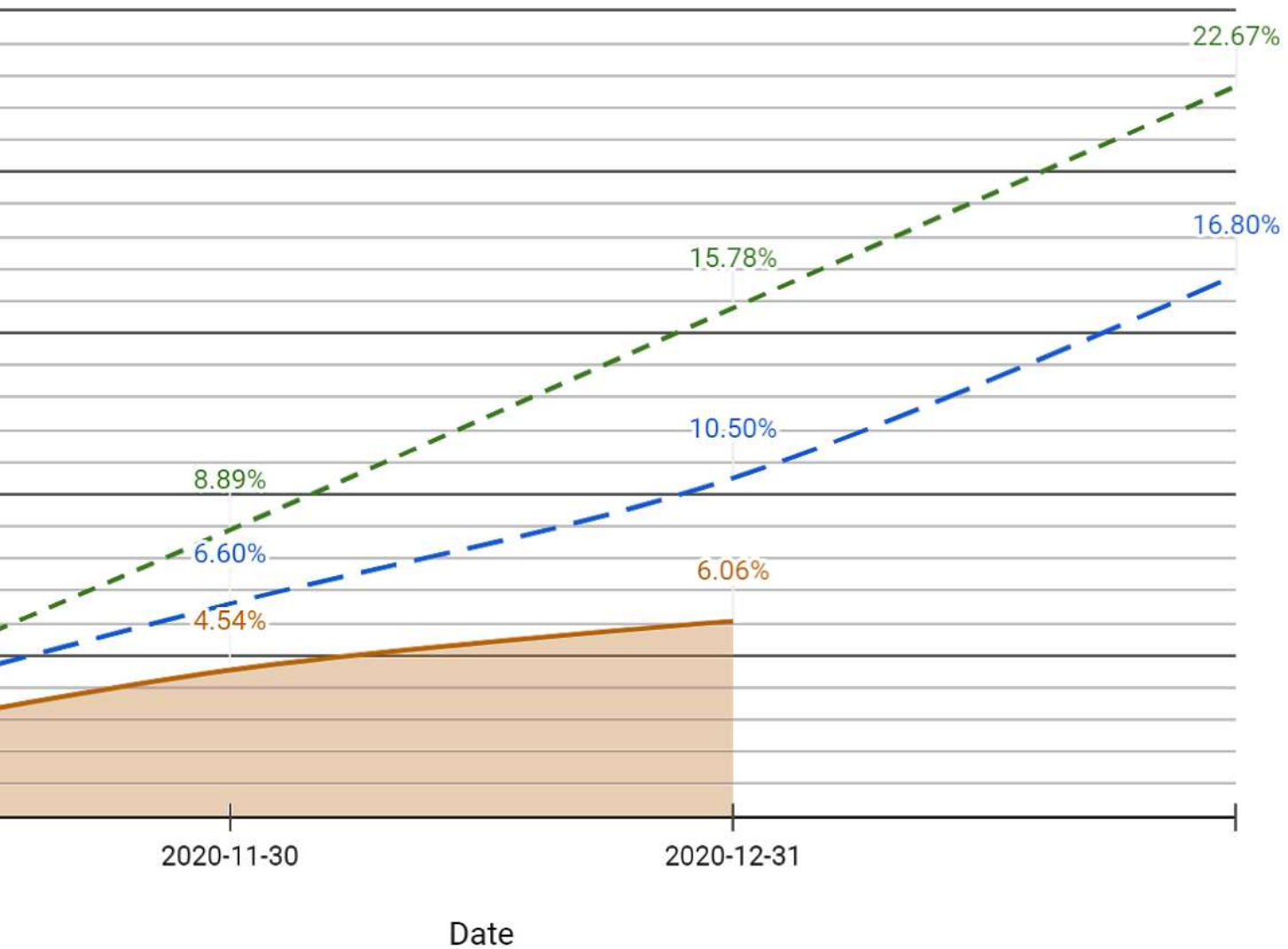


Cumulative Elapsed Time % Cumulative Scheduled % Cumulative Actual %

ool

Hay Al Iskan Basic mixed - Jerash

Cumulative Progress



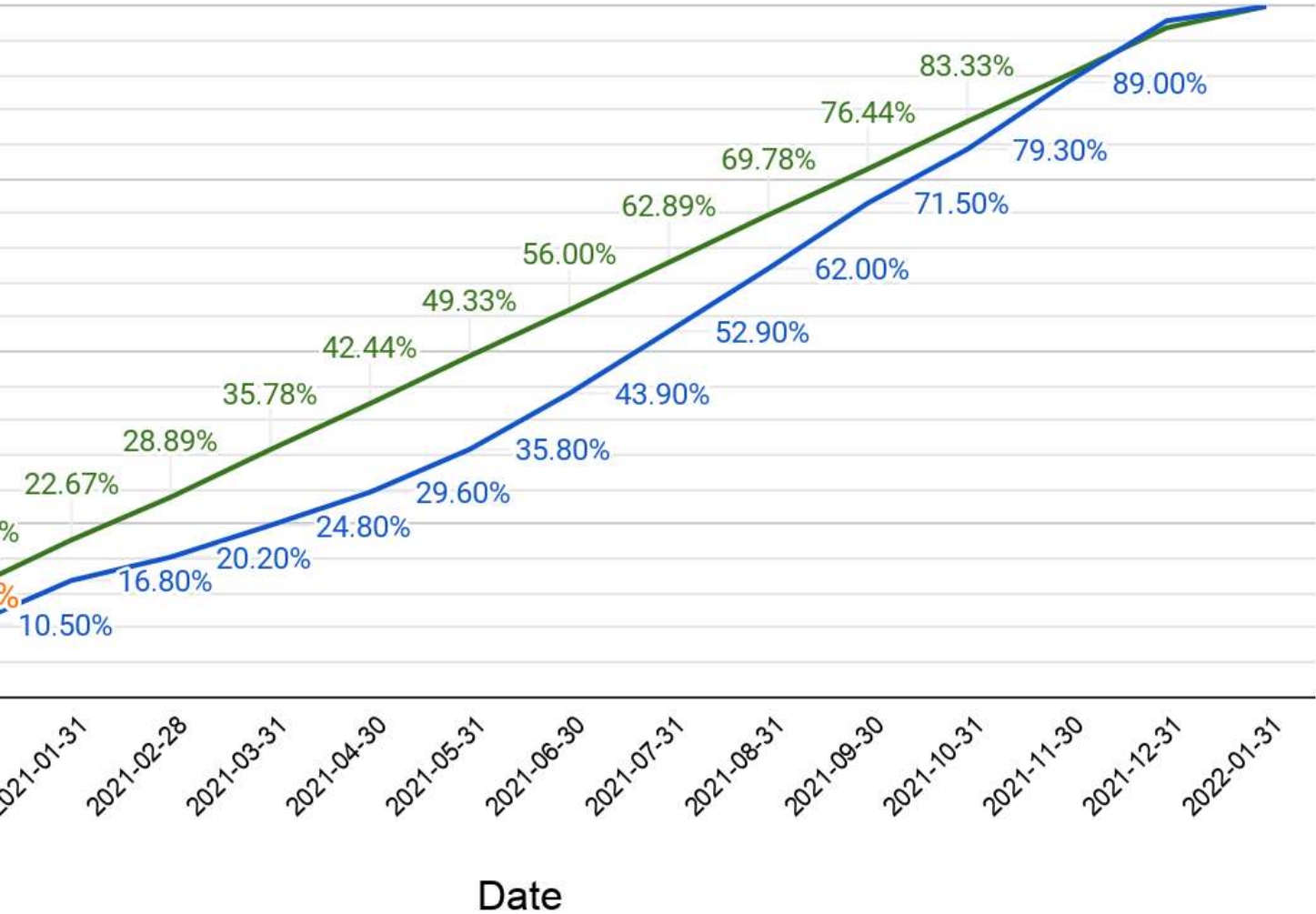
Elapsed Time % Cumulative Scheduled % Cumulative Actual %

(Figure 12. Percentage of Completion (Cumulative)-Hay Al Iskan Basic Mixed School)

SKEP III Package 2

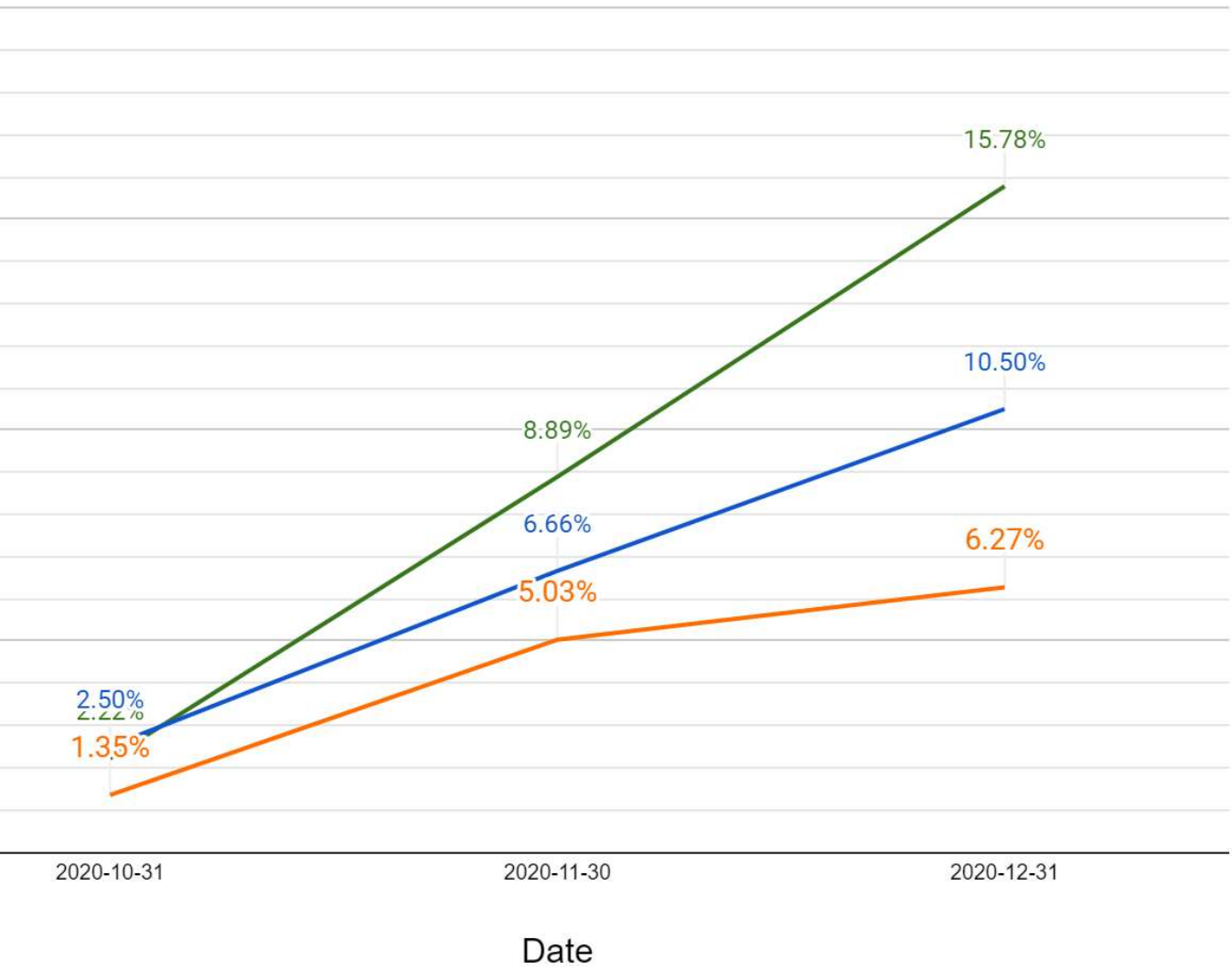
Cumulative Progress

ed Time % **— Cumulative Scheduled %** **— Cumulative Actual %**



SKEP III Package 2 Cumulative Progress

Cumulative Elapsed Time % Cumulative Scheduled % Cumulative Actual %



▪ Engineer Notes:

Thahr Al-Sarow Basic School for Boys- Jerash:

A delay of total 35 days resulted from changing the formation level as follows:
The Designer Geotechnical Laboratory (ACES) recommended three different formation levels.

The Designer modified the Laboratory recommendation and issued new revised drawings consisting of two formation levels.

The said changes will result in extra quantity of excavation.

Jumana Bint Abi Taleb Basic Mixed School- Amman

A delay in obtaining construction license and excavation permit caused a delay in starting the project by 29 days.

Annex -1-

1.4 Log of Activities
(Completed & In-Progress)

Works %	Blinding Works %	Foundation Works %	Foundation Works Completion Date	Walls Completion Date	Backfilling Works %	Backfilling Completion Date	Total Percentage of Milestone Completed (%)	Notes
5%	50% for the boundary wall. 100% for the building	50% for the boundary wall and 0% for the building.	-	-	-	-	5%	
13.00%	0%	-	-	-	-	-	6.41%	90% of excavation, 13% of building blinding, boundary walls (blinding, foundation)
60%	0%	31/12/2020 basement	13/1/2021 basement	0%	31/1/2021 basement			

(Table 14. Log of Activities)

Annex -1-

1.5 Cash-Flow Charts



Project Duration (15 Months)

Progress Payments

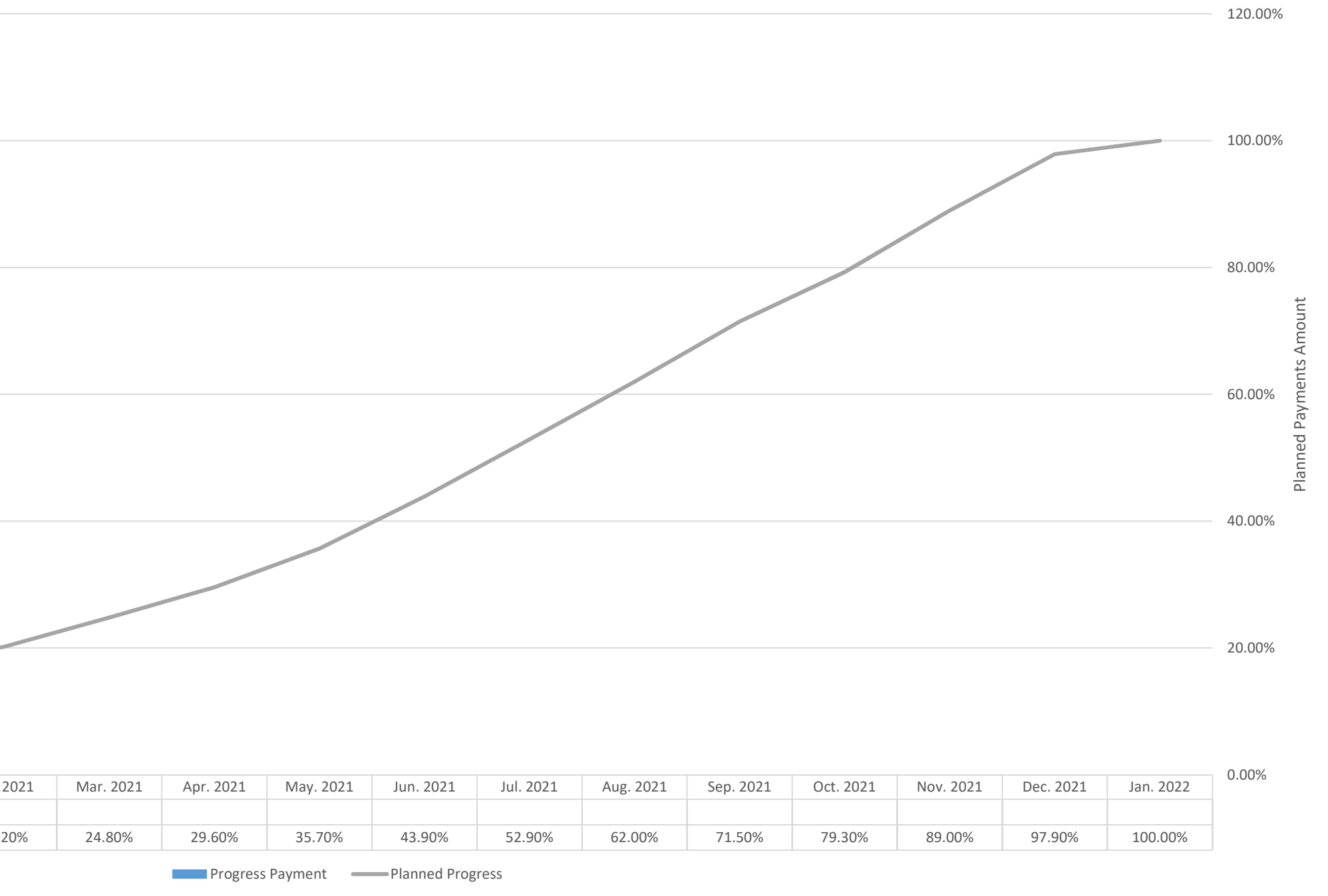
Mar. 2021	Apr. 2021	May. 2021	Jun. 2021	Jul. 2021	Aug. 2021	Sep. 2021	Oct. 2021	Nov. 2021	Dec. 2021	Jan. 2022

Planned Progress

Mar. 2021	Apr. 2021	May. 2021	Jun. 2021	Jul. 2021	Aug. 2021	Sep. 2021	Oct. 2021	Nov. 2021	Dec. 2021	Jan. 2022
24.80%	29.60%	35.70%	43.90%	52.90%	62.00%	71.50%	79.30%	89.00%	97.90%	100.00%

(Table 15. Cash-Flow)

Cash-Flow Charts



(Figure 10. Cash-Flow Chart)

Annex -2-

Correspondence Logs

2.1 Incoming Letters

2.2 Outgoing Letters

Correspondence Log

2.1 Incoming Letters

Letter No.	Letter REF.	Date of Letter	Date Received	From	Letter Description	Status		Assigned to	Issued To	Letter Location		Notes
						Answered	Pending			Received Letter	Issued Letter	
1	USAID/3/2019/410	30/11/2020	01/12/2020	Dijlah Establishment Constr. Contr.	Shoring System	X		Eng. Sawsan Al-Yousef	Dijlah Establishment Constr. Contr.	Scanned File:Scanned-الكتب-368%الصفحةPackage 2\2020-2-2-2173.pdf	Scanned File:Scanned-الكتب-368%الصفحةPackage 2\2020-368-2-2-3093.pdf	
2	USAID/3/2019/411	30/11/2020	01/12/2020	Dijlah Establishment Constr. Contr.	Material Submittal	X		Eng. Sawsan Al-Yousef	File	Scanned File:Scanned-الكتب-368%الصفحةPackage 2\2020-2-2-2174.pdf		
3	USAID/3/2019/413	30/11/2020	01/12/2020	Dijlah Establishment Constr. Contr.	Shoring System	X		Eng. Sawsan Al-Yousef	Dijlah Establishment Constr. Contr.	Scanned File:Scanned-الكتب-368%الصفحةPackage 2\2020-2-2-2175.pdf	Scanned File:Scanned-الكتب-368%الصفحةPackage 2\2020-368-2-2-3235.pdf	
4	USAID/3/2019/417	01/12/2020	01/12/2020	Dijlah Establishment Constr. Contr.	Submittals for Electrical Ups	X		Eng. Musa Abdelhadi Eng. Liath Zwairi	Dijlah Establishment Constr. Contr.	Scanned File:Scanned-الكتب-368%الصفحةPackage 2\2020-2-2-2178.pdf	Scanned File:Scanned-الكتب-368%الصفحةPackage 2\2020-368-2-2-3109.pdf	
5	USAID/3/2019/418	01/12/2020	01/12/2020	Dijlah Establishment Constr. Contr.	Material Submittal	X		Eng. Batool Yassin	Dijlah Establishment Constr. Contr.	Scanned File:Scanned-الكتب-368%الصفحةPackage 2\2020-2-2-2179.pdf	Scanned File:Scanned-الكتب-368%الصفحةPackage 2\2020-368-2-2-3136.pdf	
6	USAID/3/2019/415	01/12/2020	01/12/2020	Dijlah Establishment Constr. Contr.	Shoring System	X		Eng. Sawsan Al-Yousef	Dijlah Establishment Constr. Contr.	Scanned File:Scanned-الكتب-368%الصفحةPackage 2\2020-2-2-2177.pdf	Scanned File:Scanned-الكتب-368%الصفحةPackage 2\2020-368-2-2-	
7	/SKEP/USAID/10/2019/3134	23/11/2020	02/12/2020	MPWH	Concrete Mix Design	X		Eng. Sawsan Al-Yousef Eng. Natheer Amareen Eng. Hasan Shanhua	Dijlah Establishment Constr. Contr.	Scanned File:Scanned-الكتب-368%الصفحةPackage 2\2020-2-1-2188.pdf	Scanned File:Scanned-الكتب-368%الصفحةPackage 2\2020-368-2-2-	
8	USAID/3/2019/428	03/12/2020	05/12/2020	Dijlah Establishment Constr. Contr.	Mechanical Works	X		Eng. Mohammad Almajale	Dijlah Establishment Constr. Contr.	Scanned File:Scanned-الكتب-368%الصفحةPackage 2\2020-2-2-2201.pdf	Scanned File:Scanned-الكتب-368%الصفحةPackage 2\2020-368-2-2-3163.pdf	
9	USAID/3/2019/419	02/12/2020	03/12/2020	Dijlah Establishment Constr. Contr.	Mechanical Engineer for Approval	X		Eng. Sawsan Al-Yousef	Dijlah Establishment Constr. Contr.	Scanned File:Scanned-الكتب-368%الصفحةPackage 2\2020-2-2-2194.pdf	Scanned File:Scanned-الكتب-368%الصفحةPackage 2\2020-368-2-2-3201.pdf	
10	USAID/10/2019/35613	30/11/2020	02/12/2020	MPWH	Contractors Superintendence	X		Eng. Sawsan Al-Yousef	MPWH Dijlah Establishment Constr. Contr.	Scanned File:Scanned-الكتب-368%الصفحةPackage 2\2020-2-1-2183.pdf	Scanned File:Scanned-الكتب-368%الصفحةPackage 2\2020-368-2-1-3257.pdf Scanned File:Scanned-الكتب-368%الصفحةPackage 2\2020-368-2-2-3233.pdf	

Letter No.	Letter REF.	Date of Letter	Date Received	From	Letter Description	Status		Assigned to	Issued To	Letter Location		Notes
						Answered	Pending			Received Letter	Issued Letter	
11	USAID/3/2019/414	30/11/2020	01/12/2020	Dijlah Establishment Constr. Contr.	Manufacturer Letter for Radiators	X		File		Scanned Files/Scanned-الكتب-368/الباقيPackage 2/2020-2-2-2176.pdf		
12	USAID/10/2019/35738	01/12/2020	02/12/2020	MPWH	Contractors Superintendence	X		Eng. Sawsan Al-Yousef	MPWH	Scanned Files/Scanned-الكتب-368/الباقيPackage 2/2020-2-1-2184.pdf	Scanned Files/Scanned-الكتب-368/الباقيPackage 2/2020-368-2-1-3243.pdf	
13	USAID/3/2019/424	03/12/2020	05/12/2020	Dijlah Establishment Constr. Contr.	Cast Iron Radiators	X		Eng. Mohammad Almajale	Dijlah Establishment Constr. Contr.	Scanned Files/Scanned-الكتب-368/الباقيPackage 2/2020-2-2-2200.pdf	Scanned Files/Scanned-الكتب-368/الباقيPackage 2/2020-368-2-2-3144.pdf	
14	USAID/3/2019/430	05/12/2020	05/12/2020	Dijlah Establishment Constr. Contr.	Replace the Mechanical Engineer	X		Eng. Sawsan Al-Yousef	Dijlah Establishment Constr. Contr.	Scanned Files/Scanned-الكتب-368/الباقيPackage 2/2020-2-2-2213.pdf	Scanned Files/Scanned-الكتب-368/الباقيPackage 2/2020-368-2-2-3201.pdf	
15	USAID/3/2019/432	06/12/2020	06/12/2020	Dijlah Establishment Constr. Contr.	Contractors Superintendence	X		Eng. Sawsan Al-Yousef	Dijlah Establishment Constr. Contr.	Scanned Files/Scanned-الكتب-368/الباقيPackage 2/2020-2-2-2221.pdf	Scanned Files/Scanned-الكتب-368/الباقيPackage 2/2020-368-2-2-3237.pdf	
16	USAID/3/2019/434	06/12/2020	06/12/2020	Dijlah Establishment Constr. Contr.	Galvanized Steel Sheet for Duct Work	X		Eng. Mohammad Almajale Eng. Hasan Shaqbua	Dijlah Establishment Constr. Contr.	Scanned Files/Scanned-الكتب-368/الباقيPackage 2/2020-2-2-2227.pdf	Scanned Files/Scanned-الكتب-368/الباقيPackage 2/2020-368-2-2-3162.pdf	
17	USAID/3/2019/435	05/12/2020	06/12/2020	Dijlah Establishment Constr. Contr.	Acrylic Solid Surface	X		Eng. Hasan Shaqbua Eng. Batool Yassine	Dijlah Establishment Constr. Contr.	Scanned Files/Scanned-الكتب-368/الباقيPackage 2/2020-2-2-2227.pdf	Scanned Files/Scanned-الكتب-368/الباقيPackage 2/2020-368-2-2-3167.pdf	
18	USAID/3/2019/436	06/12/2020	06/12/2020	Dijlah Establishment Constr. Contr.	Aluminum Windows and Cairtan Wall	X		Eng. Hasan Shaqbua Eng. Batool Yassine	Dijlah Establishment Constr. Contr.	Scanned Files/Scanned-الكتب-368/الباقيPackage 2/2020-2-2-2229.pdf	Scanned Files/Scanned-الكتب-368/الباقيPackage 2/2020-368-2-2-3190.pdf	
19	USAID/3/2019/437	06/12/2020	06/12/2020	Dijlah Establishment Constr. Contr.	Material Submittal	X		Eng. Hasan Shaqbua Eng. Batool Yassine	Dijlah Establishment Constr. Contr.	Scanned Files/Scanned-الكتب-368/الباقيPackage 2/2020-2-2-2230.pdf	Scanned Files/Scanned-الكتب-368/الباقيPackage 2/2020-368-2-2-3192.pdf	
20	USAID/3/2019/438	05/12/2020	06/12/2020	Dijlah Establishment Constr. Contr.	Polypropylene Pipes	X		Eng. Mohammad Almajale	Dijlah Establishment Constr. Contr.	Scanned Files/Scanned-الكتب-368/الباقيPackage 2/2020-2-2-2231.pdf	Scanned Files/Scanned-الكتب-368/الباقيPackage 2/2020-368-2-2-3169.pdf	

Letter No.	Letter REF.	Date of Letter	Date Received	From	Letter Description	Status		Assigned to	Issued To	Letter Location		Notes
						Answered	Pending			Received Letter	Issued Letter	
21	USAID/3/2019/439	06/12/2020	06/12/2020	Dijlah Establishment Constr. Contr.	Material Submittal	X		Eng. Hasan Shaqbua Eng. Batool Yassine	Dijlah Establishment Constr. Contr.	Scanned FileScanned-الكتب-368الباقيPackage 2\2020-2-2-2232.pdf	Scanned FileScanned-الكتب-368الباقيPackage 2\2020-368-2-2-3220.pdf	
22	USAID/3/2019/440	05/12/2020	06/12/2020	Dijlah Establishment Constr. Contr.	Steel Fittings	X		Eng. Mohammad Almajale	Dijlah Establishment Constr. Contr.	Scanned FileScanned-الكتب-368الباقيPackage 2\2020-2-2-2233.pdf	Scanned FileScanned-الكتب-368الباقيPackage 2\2020-368-2-2-3168.pdf	
23	USAID/3/2019/448	07/12/2020	07/12/2020	Dijlah Establishment Constr. Contr.	Shoring System	X		Eng. Sawsan Al-Yousef Eng. Natheer Amareen	Dijlah Establishment Constr. Contr.	Scanned FileScanned-الكتب-368الباقيPackage 2\2020-2-2-2255.pdf	Scanned FileScanned-الكتب-368الباقيPackage 2\2020-368-2-2-3396.pdf	
24	USAID/3/2019/445	07/12/2020	07/12/2020	Dijlah Establishment Constr. Contr.	Submittals for Electrical Elevators	X		Eng. Musa Abdelhadi Eng. Liath Zwairi	Dijlah Establishment Constr. Contr.	Scanned FileScanned-الكتب-368الباقيPackage 2\2020-2-2-2253.pdf	Scanned FileScanned-الكتب-368الباقيPackage 2\2020-368-2-2-3269.pdf	
25	USAID/3/2019/443	07/12/2020	07/12/2020	Dijlah Establishment Constr. Contr.	Commencement of Work	X		Eng. Sawsan Al-Yousef	File	Scanned FileScanned-الكتب-368الباقيPackage 2\2020-2-2-2252.pdf	-	
26	USAID/3/2019/442	07/12/2020	07/12/2020	Dijlah Establishment Constr. Contr.	Commencement of Work	X		Eng. Sawsan Al-Yousef	Dijlah Establishment Constr. Contr.	Scanned FileScanned-الكتب-368الباقيPackage 2\2020-2-2-2251.pdf	Scanned FileScanned-الكتب-368الباقيPackage 2\2020-368-2-2-3202.pdf	
27	USAID/3/2019/447	07/12/2020	07/12/2020	Dijlah Establishment Constr. Contr.	Submittal's for Main Distribution Board	X		Eng. Musa Abdelhadi Eng. Liath Zwairi	Dijlah Establishment Constr. Contr.	Scanned FileScanned-الكتب-368الباقيPackage 2\2020-2-2-2254.pdf	Scanned FileScanned-الكتب-368الباقيPackage 2\2020-368-2-2-3210.pdf	
28	USAID/3/2019/457	08/12/2020	10/12/2020	Dijlah Establishment Constr. Contr.	Capacity for UPS In	X		Eng. Liath Zwairi	Dijlah Establishment Constr. Contr.	Scanned FileScanned-الكتب-368الباقيPackage 2\2020-2-2-2274.pdf	Scanned FileScanned-الكتب-368الباقيPackage 2\2020-368-2-2-3211.pdf	
29	USAID/3/2019/459	09/12/2020	10/12/2020	Dijlah Establishment Constr. Contr.	Material Submittal porcelain and Ceramic Tiles	X		Eng. Batool Yassin	Dijlah Establishment Constr. Contr.	Scanned FileScanned-الكتب-368الباقيPackage 2\2020-2-2-2275.pdf	Scanned FileScanned-الكتب-368الباقيPackage 2\2020-368-2-2-3279.pdf	
30	USAID/3/2019/467	12/12/2020	12/12/2020	Dijlah Establishment Constr. Contr.	Tax Exception/ Bills of Material		X	Eng. Sawsan Al-Yousef		Scanned FileScanned-الكتب-368الباقيPackage 2\2020-2-2-2288.pdf		

Letter No.	Letter REF.	Date of Letter	Date Received	From	Letter Description	Status		Assigned to	Issued To	Letter Location		Notes
						Answered	Pending			Received Letter	Issued Letter	
31	USAID/3/2019/466	10/12/2020	12/12/2020	Dijlah Establishment Constr. Contr.	Material Submittal	X		Eng. Hasan Shaqbua Eng. Batool Yassine	Dijlah Establishment Constr. Contr.	\Scanned Files\Scanned-الكتب\368\المواد\Package 2\2020-2-2-2287.pdf	\Scanned Files\Scanned-الكتب\368\المواد\Package 2\2020-368-2-2-3350.pdf	
32	USAID/3/2019/468	12/12/2020	12/12/2020	Dijlah Establishment Constr. Contr.	Project Update Schedule as of 01/12/2020	X		Eng. Sawsan Al-Yousef	Dijlah Establishment Constr. Contr.	\Scanned Files\Scanned-الكتب\368\المواد\Package 2\2020-2-2-2289.pdf	\Scanned Files\Scanned-الكتب\368\المواد\Package 2\2020-368-2-2-3346.pdf	
33	USAID/10/2019/36901	10/12/2020	13/12/2020	MPWH	Sewage Collection Tank/Jumana Bint Abi Taleb	X		Eng. Sawsan Al-Yousef	MPWH	\Scanned Files\Scanned-الكتب\368\المواد\Package 2\2020-2-1-2292.pdf	\Scanned Files\Scanned-الكتب\368\المواد\Package 2\2020-368-2-1-3341.pdf	
34	USAID/10/2019/36964	10/12/2020	13/12/2020	MPWH	Contractor's Superintendence/ Safety Officer	X		Eng. Sawsan Al-Yousef	Dijlah Establishment Constr. Contr.	\Scanned Files\Scanned-الكتب\368\المواد\Package 2\2020-2-1-2293.pdf	\Scanned Files\Scanned-الكتب\368\المواد\Package 2\2020-368-2-2-3342.pdf	
35	USAID/3/2019/469	13/12/2020	13/12/2020	Dijlah Establishment Constr. Contr.	Monthly Report November	X		Eng. Sawsan Al-Yousef Eng. Natheer Amareen	Dijlah Establishment Constr. Contr.	\Scanned Files\Scanned-الكتب\368\المواد\Package 2\2020-2-2-2294.pdf	\Scanned Files\Scanned-الكتب\368\المواد\Package 2\2020-368-2-2-3347.pdf	
36	USAID/3/2019/470	13/12/2020	13/12/2020	Dijlah Establishment Constr. Contr.	Country of Origin for UPS	X		Eng. Musa Abdelhadi Eng. Liath Zwairi	Dijlah Establishment Constr. Contr.	\Scanned Files\Scanned-الكتب\368\المواد\Package 2\2020-2-2-2295.pdf	\Scanned Files\Scanned-الكتب\368\المواد\Package 2\2020-368-2-2-3262.pdf	
37	USAID/3/2019/473	13/12/2020	13/12/2020	Dijlah Establishment Constr. Contr.	Duct Accessories	X		Eng. Mohammad Almajale	Dijlah Establishment Constr. Contr.	\Scanned Files\Scanned-الكتب\368\المواد\Package 2\2020-2-2-2298.pdf	\Scanned Files\Scanned-الكتب\368\المواد\Package 2\2020-368-2-2-3258.pdf	
										\Scanned Files\Scanned-الكتب\368\المواد\Package 2\2020-2-2-2298.pdf	\Scanned Files\Scanned-الكتب\368\المواد\Package 2\2020-368-2-2-3259.pdf	
										\Scanned Files\Scanned-الكتب\368\المواد\Package 2\2020-2-2-2298.pdf	\Scanned Files\Scanned-الكتب\368\المواد\Package 2\2020-368-2-2-3258.pdf	
38	USAID/3/2019/474	13/12/2020	13/12/2020	Dijlah Establishment Constr. Contr.	Air Outlet	X		Eng. Mohammad Almajale	Dijlah Establishment Constr. Contr.	\Scanned Files\Scanned-الكتب\368\المواد\Package 2\2020-2-2-2299.pdf	\Scanned Files\Scanned-الكتب\368\المواد\Package 2\2020-368-2-2-3263.pdf	
39	USAID/3/2019/476	13/12/2020	13/12/2020	Dijlah Establishment Constr. Contr.	Aluminum Windows and Cairtan Wall	X		Eng. Batool Yassin	Dijlah Establishment Constr. Contr.	\Scanned Files\Scanned-الكتب\368\المواد\Package 2\2020-2-2-2301.pdf	\Scanned Files\Scanned-الكتب\368\المواد\Package 2\2020-368-2-2-3336.pdf	
40	USAID/3/2019/477	13/12/2020	13/12/2020	Dijlah Establishment Constr. Contr.	Pipe and Duct Insulation	X		Eng. Mohammad Almajale	Dijlah Establishment Constr. Contr.	\Scanned Files\Scanned-الكتب\368\المواد\Package 2\2020-2-2-2302.pdf	\Scanned Files\Scanned-الكتب\368\المواد\Package 2\2020-368-2-2-3261.pdf	

Letter No.	Letter REF.	Date of Letter	Date Received	From	Letter Description	Status		Assigned to	Issued To	Letter Location		Notes
						Answered	Pending			Received Letter	Issued Letter	
41	USAID/3/2019/478	13/12/2020	13/12/2020	Dijlah Establishment Constr. Contr.	Material Submittal	X		Eng. Batool Yassin	Dijlah Establishment Constr. Contr.	Scanned File\Scanned-الكتب-368\الباقي\Package 2\2020-2-2-2303.pdf	Scanned File\Scanned-الكتب-368\الباقي\Package 2\2020-368-2-2-3267.pdf	
42	USAID/3/2019/472	13/12/2020	13/12/2020	Dijlah Establishment Constr. Contr.	Galvanized Steel Sheet for Duct Work	X		Eng. Mohammad Almajale	Dijlah Establishment Constr. Contr.	Scanned File\Scanned-الكتب-368\الباقي\Package 2\2020-2-2-2297.pdf	Scanned File\Scanned-الكتب-368\الباقي\Package 2\2020-368-2-2-3246.pdf	
43	USAID/3/2019/475	13/12/2020	13/12/2020	Dijlah Establishment Constr. Contr.	Electrical Water Heater	X		Eng. Musa Abdelhadi Eng. Omar Nasrallah	Dijlah Establishment Constr. Contr.	Scanned File\Scanned-الكتب-368\الباقي\Package 2\2020-2-2-2300.pdf	Scanned File\Scanned-الكتب-368\الباقي\Package 2\2020-368-2-2-3249.pdf	
44	USAID/12/2019/36764	09/12/2020	14/12/2020	MPWH	Insurance Policy	X		Eng. Sawsan Al-Yousef Eng. Natheer Amareen	Dijlah Establishment Constr. Contr.	Scanned File\Scanned-الكتب-368\الباقي\Package 2\2020-2-1-2307.pdf	Scanned File\Scanned-الكتب-368\الباقي\Package 2\2020-368-2-2-3338.pdf	
45	USAID/3/2019/479	14/12/2020	14/12/2020	Dijlah Establishment Constr. Contr.	Replace the Mechanical Engineer	X		Eng. Sawsan Al-Yousef	MPWH	Scanned File\Scanned-الكتب-368\الباقي\Package 2\2020-2-2-2320.pdf	Scanned File\Scanned-الكتب-368\الباقي\Package 2\2020-368-2-1-3347.pdf	
46	USAID/3/2019/481	14/12/2020	14/12/2020	Dijlah Establishment Constr. Contr.	Fire Hose Cabinet & Fire Extinguisher	X		Eng. Mohammad Almajale	Dijlah Establishment Constr. Contr.	Scanned File\Scanned-الكتب-368\الباقي\Package 2\2020-2-2-2321.pdf	Scanned File\Scanned-الكتب-368\الباقي\Package 2\2020-368-2-2-3265.pdf	
47	USAID/3/2019/484	12/12/2020	12/12/2020	Dijlah Establishment Constr. Contr.	Time Extension	X		Eng. Sawsan Al-Yousef	Dijlah Establishment Constr. Contr.	Scanned File\Scanned-الكتب-368\الباقي\Package 2\2020-2-2-2327.pdf	Scanned File\Scanned-الكتب-368\الباقي\Package 2\2020-368-2-2-3321.pdf	
48	USAID/10/2019/37452	13/12/2020	15/12/2020	MPWH	NGL Plans (Grid 3x3)	X		Eng. Sawsan Al-Yousef Eng. Natheer Amareen	Dijlah Establishment Constr. Contr.	Scanned File\Scanned-الكتب-368\الباقي\Package 2\2020-2-1-2326.pdf	Scanned File\Scanned-الكتب-368\الباقي\Package 2\2020-368-2-2-3326.pdf	
49	USAID/3/2019/486	15/12/2020	15/12/2020	Dijlah Establishment Constr. Contr.	New Foundation Levels/Thahr Al Sarow	X		Eng. Sawsan Al-Yousef Eng. Natheer Amareen	Dijlah Establishment Constr. Contr.	Scanned File\Scanned-الكتب-368\الباقي\Package 2\2020-2-2-2329.pdf	Scanned File\Scanned-الكتب-368\الباقي\Package 2\2020-368-2-2-3397.pdf	
50	USAID/3/2019/487	15/12/2020	15/12/2020	Dijlah Establishment Constr. Contr.	Electrical Shop Drawing	X		Eng. Musa Abdelhadi Eng. Liath Zwairi	Dijlah Establishment Constr. Contr.	Scanned File\Scanned-الكتب-368\الباقي\Package 2\2020-2-2-2330.pdf	Scanned File\Scanned-الكتب-368\الباقي\Package 2\2020-368-2-2-3354.pdf	

Letter No.	Letter REF.	Date of Letter	Date Received	From	Letter Description	Status		Assigned to	Issued To	Letter Location		Notes
						Answered	Pending			Received Letter	Issued Letter	
51	USAID/3/2019/488	15/12/2020	15/12/2020	Dijlah Establishment Constr. Contr.	Electricity Network for Site Office	X		Eng. Musa Abdelhadi Eng. Liath Zwairi	Dijlah Establishment Constr. Contr.	Scanned FileScanned-الكتب-368في المصارفPackage 2\2020-2-2-2331.pdf	Scanned FileScanned-الكتب-368في المصارفPackage 2\2020-368-2-2-3355.pdf	
52	USAID/3/2019/489	15/12/2020	15/12/2020	Dijlah Establishment Constr. Contr.	Material Submittal	X		Eng. Batoool Yassin	Dijlah Establishment Constr. Contr.	Scanned FileScanned-الكتب-368في المصارفPackage 2\2020-2-2-2332.pdf	Scanned FileScanned-الكتب-368في المصارفPackage 2\2020-368-2-2-3411.pdf	
53	USAID/3/2019/485	15/12/2020	15/12/2020	Dijlah Establishment Constr. Contr.	Work Plan for Boundary Wall/ Thahr Al Sarow	X		Eng. Sawsan Al-Yousef	Dijlah Establishment Constr. Contr.	Scanned FileScanned-الكتب-368في المصارفPackage 2\2020-2-2-2328.pdf	Scanned FileScanned-الكتب-368في المصارفPackage 2\2020-368-2-2-3276-.pdf	
54	USAID/3/2019/493	16/12/2020	16/12/2020	Dijlah Establishment Constr. Contr.	Valve	X		Eng. Mohammad Almajale	Dijlah Establishment Constr. Contr.	Scanned FileScanned-الكتب-368في المصارفPackage 2\2020-2-2-2342.pdf	Scanned FileScanned-الكتب-368في المصارفPackage 2\2020-368-2-2-3309.pdf	
55	USAID/3/2019/495	16/12/2020	16/12/2020	Dijlah Establishment Constr. Contr.	Fan	X		Eng. Mohammad Almajale	Dijlah Establishment Constr. Contr.	Scanned FileScanned-الكتب-368في المصارفPackage 2\2020-2-2-2343.pdf	Scanned FileScanned-الكتب-368في المصارفPackage 2\2020-368-2-2-3308.pdf	
56	USAID/3/2019/491	16/12/2020	16/12/2020	Dijlah Establishment Constr. Contr.	Roof Top Package	X		Eng. Mohammad Almajale	Dijlah Establishment Constr. Contr.	Scanned FileScanned-الكتب-368في المصارفPackage 2\2020-2-2-2340.pdf	Scanned FileScanned-الكتب-368في المصارفPackage 2\2020-368-2-2-3315.pdf	
57	USAID/3/2019/492	16/12/2020	16/12/2020	Dijlah Establishment Constr. Contr.	Split Unit	X		Eng. Mohammad Almajale	Dijlah Establishment Constr. Contr.	Scanned FileScanned-الكتب-368في المصارفPackage 2\2020-2-2-2341.pdf	Scanned FileScanned-الكتب-368في المصارفPackage 2\2020-368-2-2-3313.pdf	
58	USAID/3/2019/497	16/12/2020	16/12/2020	Dijlah Establishment Constr. Contr.	Contractor Superintendence	X		Eng. Sawsan Al-Yousef	Dijlah Establishment Constr. Contr.	Scanned FileScanned-الكتب-368في المصارفPackage 2\2020-2-2-2345.pdf	Scanned FileScanned-الكتب-368في المصارفPackage 2\2020-368-2-2-3320.pdf	
59	USAID/3/2019/496	16/12/2020	16/12/2020	Dijlah Establishment Constr. Contr.	Safety Officers	X		Eng. Sawsan Al-Yousef	MPWH	Scanned FileScanned-الكتب-368في المصارفPackage 2\2020-2-2-2344.pdf	Scanned FileScanned-الكتب-368في المصارفPackage 2\2020-368-2-1-3348.pdf	
60	USAID/3/2019/498	16/12/2020	16/12/2020	Dijlah Establishment Constr. Contr.	Request for Information/10 Steel Bar	X		Eng. Sawsan Al-Yousef Eng. Natheer Amareen	Dijlah Establishment Constr. Contr.	Scanned FileScanned-الكتب-368في المصارفPackage 2\2020-2-2-2346.pdf	Scanned FileScanned-الكتب-368في المصارفPackage 2\2020-368-2-2-3360.pdf	

Letter No.	Letter REF.	Date of Letter	Date Received	From	Letter Description	Status		Assigned to	Issued To	Letter Location		Notes
						Answered	Pending			Received Letter	Issued Letter	
61	USAID/3/2019/471	13/12/2020	13/12/2020	Dijlah Establishment Constr. Contr.	Radiator	X		Eng. Mohammad Almajale	Dijlah Establishment Constr. Contr.	Scanned File/Scanned-الكتب-368%الصفحةPackage 2\2020-2-2-2296.pdf	Scanned File/Scanned-الكتب-368%الصفحةPackage 2\2020-368-2-2-3264.pdf	
62	USAID/3/2019/500	17/12/2020	17/12/2020	Dijlah Establishment Constr. Contr.	Re Submit MDB,MCC,DB-EX Submittal	X		Eng. Musa Abdelhadi Eng. Liath Zwairi	Dijlah Establishment Constr. Contr.	Scanned File/Scanned-الكتب-368%الصفحةPackage 2\2020-2-2-2352.pdf	Scanned File/Scanned-الكتب-368%الصفحةPackage 2\2020-368-2-2-3353.pdf	
63	USAID/3/2019/502	17/12/2020	17/12/2020	Dijlah Establishment Constr. Contr.	Work Plan for Boundary Wall/ Thahr Al Sarow	X		Eng. Sawzan Al-Yousef Eng. Natheer Amareen	Dijlah Establishment Constr. Contr.	Scanned File/Scanned-الكتب-368%الصفحةPackage 2\2020-2-2-2354.pdf	Scanned File/Scanned-الكتب-368%الصفحةPackage 2\2020-368-2-2-3354.pdf	
64	USAID/3/2019/501	17/12/2020	17/12/2020	Dijlah Establishment Constr. Contr.	Drain of Portable Water Tanks	X		Eng. Mohammad Almajale	Dijlah Establishment Constr. Contr.	Scanned File/Scanned-الكتب-368%الصفحةPackage 2\2020-2-2-2353.pdf	Scanned File/Scanned-الكتب-368%الصفحةPackage 2\2020-368-2-2-3416.pdf Scanned File/Scanned-الكتب-368%الصفحةPackage 2\2020-368-2-2-3517.pdf	
65	USAID/10/2019/38171	17/12/2020	20/12/2020	MPWH	الدراسة الفنية والمالية	X		Eng. Suhair Amarin	File	Scanned File/Scanned-الكتب-368%الصفحةPackage 2\2020-2-1-2374.pdf	-	
66	USAID/3/2019/503	20/12/2020	20/12/2020	Dijlah Establishment Constr. Contr.	Project Update Schedule as of 01/12/2020	X		Eng. Sawzan Al-Yousef	Dijlah Establishment Constr. Contr.	Scanned File/Scanned-الكتب-368%الصفحةPackage 2\2020-2-2-2369.pdf	Scanned File/Scanned-الكتب-368%الصفحةPackage 2\2020-368-2-2-3346.pdf	
67	530105/220/28/24	14/12/2020	21/12/2020	Royal Scientific Society	Test Report	X		Eng. Sawzan Al-Yousef	File	Scanned File/Scanned-الكتب-368%الصفحةPackage 2\2020-2-3-2380.pdf	-	
68	USAID/10/2019/37971	16/12/2020	20/12/2020	MPWH	Contractor's Superintendence	X		Eng. Sawzan Al-Yousef	Dijlah Establishment Constr. Contr.	Scanned File/Scanned-الكتب-368%الصفحةPackage 2\2020-2-1-2377.pdf	Scanned File/Scanned-الكتب-368%الصفحةPackage 2\2020-368-2-2-3427.pdf	
69	USAID/10/2019/37364	15/12/2020	20/12/2020	MPWH	الإحتجاز لمن يلزم	X		Eng. Sawzan Al-Yousef	Dijlah Establishment Constr. Contr.	Scanned File/Scanned-الكتب-368%الصفحةPackage 2\2020-2-1-2378.pdf	Scanned File/Scanned-الكتب-368%الصفحةPackage 2\2020-368-2-2-3426.pdf	
70	USAID/3/2019/506	21/12/2020	22/12/2020	Dijlah Establishment Constr. Contr.	Submittals for lighting Fixture & Poles	X		Eng. Musa Abdelhadi Eng. Liath Zwairi	Dijlah Establishment Constr. Contr.	Scanned File/Scanned-الكتب-368%الصفحةPackage 2\2020-2-2-2394.pdf	Scanned File/Scanned-الكتب-368%الصفحةPackage 2\2020-368-2-2-3480.pdf	

Letter No.	Letter REF.	Date of Letter	Date Received	From	Letter Description	Status		Assigned to	Issued To	Letter Location		Notes
						Answered	Pending			Received Letter	Issued Letter	
71	USAID/3/2019/513	21/12/2020	22/12/2020	Dijlah Establishment Constr. Contr.	Samples for Fire Alarm System	X		Eng. Musa Abdelhadi Eng. Liath Zwairi	Dijlah Establishment Constr. Contr.	Scanned Files/Scanned-الكتب-368/البريد-368/2/2020-2-2-2400.pdf	Scanned Files/Scanned-الكتب-368/البريد-368/2/2020-368-2-2-3518.pdf	
72	USAID/3/2019/507	21/12/2020	22/12/2020	Dijlah Establishment Constr. Contr.	Financial Offer for UPS 20 KVA for Hay Al Iskan Basic Mixed School		X	Eng. Musa Abdelhadi Eng. Liath Zwairi		Scanned Files/Scanned-الكتب-368/البريد-368/2/2020-2-2-2395.pdf		
73	USAID/3/2019/508	21/12/2020	22/12/2020	Dijlah Establishment Constr. Contr.	All Pumps	X		Eng. Mohammad Almajale	Dijlah Establishment Constr. Contr.	Scanned Files/Scanned-الكتب-368/البريد-368/2/2020-2-2-2396.pdf	Scanned Files/Scanned-الكتب-368/البريد-368/2/2020-368-2-2-3422.pdf	
74	USAID/3/2019/512	21/12/2020	22/12/2020	Dijlah Establishment Constr. Contr.	Shop Drawing for Lightning System for the 3 Schools	X		Eng. Musa Abdelhadi Eng. Liath Zwairi	Dijlah Establishment Constr. Contr.	Scanned Files/Scanned-الكتب-368/البريد-368/2/2020-2-2-2399.pdf	Scanned Files/Scanned-الكتب-368/البريد-368/2/2020-368-2-2-3474.pdf	
75	USAID/3/2019/515	22/12/2020	23/12/2020	Dijlah Establishment Constr. Contr.	Work Plan for Boundary Wall/ Jumana Bint Abi Taleb School	X		Eng. Sawsan Al-Yousef	Dijlah Establishment Constr. Contr.	Scanned Files/Scanned-الكتب-368/البريد-368/2/2020-2-2-2415.pdf	Scanned Files/Scanned-الكتب-368/البريد-368/2/2020-368-2-2-3425.pdf	
76	USAID/10/2019/38339	20/12/2020	22/12/2020	MPWH	Site Equipment	X		Eng. Hasan Shaqbua	Dijlah Establishment Constr. Contr.	Scanned Files/Scanned-الكتب-368/البريد-368/2/2020-2-1-2392.pdf	Scanned Files/Scanned-الكتب-368/البريد-368/2/2020-368-2-2-3423.pdf	
77	USAID/10/2019/38851	22/12/2020	23/12/2020	MPWH	إيصال التيار الكهربائي للعلم	X		Eng. Musa Abdelhadi Eng. Liath Zwairi	File	Scanned Files/Scanned-الكتب-368/البريد-368/2/2020-2-1-2426.pdf		
78	USAID/10/2019/38520	20/12/2020	23/12/2020	MPWH	إيصال العمارة والصرف الصحي للعلم		X	Eng. Mohammad Almajale Eng. Musab Khalil		Scanned Files/Scanned-الكتب-368/البريد-368/2/2020-2-1-2425.pdf		
79	USAID/10/2019/38706	21/12/2020	23/12/2020	MPWH	Contractor's Superintendence/ Safety Officer	X		Eng. Sawsan Al-Yousef	Dijlah Establishment Constr. Contr.	Scanned Files/Scanned-الكتب-368/البريد-368/2/2020-2-1-2424.pdf	Scanned Files/Scanned-الكتب-368/البريد-368/2/2020-368-2-2-3495.pdf	
80	USAID/3/2019/520	23/12/2020	23/12/2020	Dijlah Establishment Constr. Contr.	Submittal for Audio/Video System	X		Eng. Musa Abdelhadi Eng. Liath Zwairi	Dijlah Establishment Constr. Contr.	Scanned Files/Scanned-الكتب-368/البريد-368/2/2020-2-2-2435.pdf	Scanned Files/Scanned-الكتب-368/البريد-368/2/2020-368-2-2-3471.pdf	

Letter No.	Letter REF.	Date of Letter	Date Received	From	Letter Description	Status		Assigned to	Issued To	Letter Location		Notes
						Answered	Pending			Received Letter	Issued Letter	
81	USAID/3/2019/519	23/12/2020	23/12/2020	Dijlah Establishment Constr. Contr.	Submittal for Public Access System	X		Eng. Musa Abdelhadi Eng. Liath Zwairi	Dijlah Establishment Constr. Contr.	Scanned File Scanned File 368 Package 2/2020-2-2-2434.pdf	Scanned File Scanned File 368 Package 2/2020-368-2-2-3473.pdf	
82	USAID/3/2019/521	23/12/2020	23/12/2020	Dijlah Establishment Constr. Contr.	Heating and Water Cabinets	X		Eng. Mohammad Almajale Eng. Musab Khalil	Dijlah Establishment Constr. Contr.	Scanned File Scanned File 368 Package 2/2020-2-2-2436.pdf	Scanned File Scanned File 368 Package 2/2020-368-2-2-3418.pdf	
83	USAID/3/2019/518	23/12/2020	23/12/2020	Dijlah Establishment Constr. Contr.	Site Plan Shop Drawing (Drainage and Rain Water)/Thahr Al Sarow	X		Eng. Mohammad Almajale Eng. Musab Khalil	Dijlah Establishment Constr. Contr.	Scanned File Scanned File 368 Package 2/2020-2-2-2433.pdf	Scanned File Scanned File 368 Package 2/2020-368-2-2-3421.pdf	
84	USAID/3/2019/505	20/12/2020	22/12/2020	Dijlah Establishment Constr. Contr.	Steel Bar Test Results/ Jumana Bint Abi Taleb	X		Eng. Sawsan Al-Yousef Eng. Natheer Amareen	File	Scanned File Scanned File 368 Package 2/2020-2-2-2393.pdf	-	
85	USAID/3/2019/526	25/12/2020	25/12/2020	Dijlah Establishment Constr. Contr.	Mock-Up Room/ Jumana Bint Abi Taleb		X	Eng. Sawsan Al-Yousef		Scanned File Scanned File 368 Package 2/2020-2-2-2443.pdf		
86	USAID/3/2019/525	24/12/2020	24/12/2020	Dijlah Establishment Constr. Contr.	Material Submittal (Colored Plaster)	X		Eng. Hasan Shaqbua Eng. Batool Yassine	Dijlah Establishment Constr. Contr.	Scanned File Scanned File 368 Package 2/2020-2-2-2442.pdf	Scanned File Scanned File 368 Package 2/2020-368-2-2-3522.pdf	
87	USAID/3/2019/529	26/12/2020	26/12/2020	Dijlah Establishment Constr. Contr.	Material Submittal (Screen and handrail)		X	Eng. Batool Yassine		Scanned File Scanned File 368 Package 2/2020-2-2-2457.pdf		
88	(530103)/220/28/24/29689	27/12/2020	27/12/2020	Royal Scientific Society	Test Report	X		Eng. Sawsan Al-Yousef	File	Scanned File Scanned File 368 Package 2/2020-2-2-2463.pdf	-	
89	534/USAID/3/2019	28/12/2020	28/12/2020	Dijlah Establishment Constr. Contr.	Samples and Elevators Submittals		X	Eng. Musa Abdelhadi Eng. Liath Zwairi		Scanned File Scanned File 368 Package 2/2020-2-2-2474.pdf		
90	536/USAID/3/2019	29/12/2020	29/12/2020	Dijlah Establishment Constr. Contr.	Contractor's Superintendence		X	Eng. Sawsan Al-Yousef		Scanned File Scanned File 368 Package 2/2020-2-2-2475.pdf		

Letter No.	Letter REF.	Date of Letter	Date Received	From	Letter Description	Status		Assigned to	Issued To	Letter Location		Notes
						Answered	Pending			Received Letter	Issued Letter	
91	535/USAID/3/2019	29/12/2020	30/12/2020	Dijlah Establishment Constr. Contr.	Material Submittal / Stone		X	Eng. Batool Yaseen	Dijlah Establishment Constr. Contr.	Scanned File\Scanned-الكيب-368\الكيب-368-2-2-2478.pdf	Scanned File\Scanned-الكيب-368\الكيب-368-2-2-3520.pdf	
92	539/USAID/3/2019	30/12/2020	30/12/2020	Dijlah Establishment Constr. Contr.	Shoring System / Hay AL-Iskan Basic Mixed School		X	Eng. Sawsan Al-Yousef Eng. Natheer Amareen		Scanned File\Scanned-الكيب-368\الكيب-368-2-2-2490.pdf		
93	540/USAID/3/2019	30/12/2020	30/12/2020	Dijlah Establishment Constr. Contr.	Delay of Mechanical		X	Eng. Sawsan Al-Yousef Eng. Mohammad Almajale		Scanned File\Scanned-الكيب-368\الكيب-368-2-2-2491.pdf		
94												
95												
96												
97												

Correspondence Log

2.2 Outgoing Letters

Letter No.	Letter REF.	Letter Description	Date of Issuance	Issued To		Letter Location	Notes
				Name	Response		
1	2020-368-2-1-3105	Shoring System/Provisional Sums	05/12/2020	MPWH		\Scanned Files\Scanned-الكتب-368\التصميم Package 2\2020-368-2-1-3105.pdf	
2	2020-368-2-2-3191	New Foundation Levels	10/12/2020	Dijlah Establishment Constr. Contr.		\Scanned Files\Scanned-الكتب-368\التصميم Package 2\2020-368-2-2-3191.pdf	
3	2020-368-2-1-3238	New Foundation Levels/Vol.1	15/12/2020	MPWH		\Scanned Files\Scanned-الكتب-368\التصميم Package 2\2020-368-2-1-3238.pdf	
4	2020-368-2-2-3278	Submittals	16/12/2020	Dijlah Establishment Constr. Contr.		\Scanned Files\Scanned-الكتب-368\التصميم Package 2\2020-368-2-2-3278.pdf	
5	2020-368-2-2-3343	Request for Information	21/12/2020	Dijlah Establishment Constr. Contr.		\Scanned Files\Scanned-الكتب-368\التصميم Package 2\2020-368-2-2-3343.pdf	
6							

Annex -3-

Submittals Logs

3.1 Architectural Submittals

3.1.1 Arch. Shop Drawings

3.1.2 Arch. Materials Submittal

3.2 Electrical Submittals

3.2.1: Elect. Shop Drawings

3.2.2: Elect. Materials Submittal

3.3 Mechanical Submittals

3.3.1 Mech. Shop Drawings

3.3.2 Mech. Materials Submittal

3.4 Civil Submittals

3.4.1 Civil Shop Drawings

3.4.2: Civil Materials Submittal

Annex -3-

3.1 Architectural Submittals

3.1.1 Arch. Shop Drawings

3.1.2 Arch. Materials Submittals

Annex -3-

3.2 Electrical Submittals

3.2.1 Elect. Shop Drawings

3.2.2 Elect. Materials Submittal

3.2.1 Elect. Shop Drawings

Wahib Medanat Consultant Engineers

Electrical Shop Drawings Tracking LOG																
Date:		Supervision Engineer: Wahib Medanat Consultant Engineers														
Project:		10/2019/USAID/SKEP/3/2		Contractor:		Dijlah Est. Constr. Contr.										
Rep no.:		3		Site:												
No.	Drawing REF.	Revision	Drawing Name	Received From	Date Received	Status				Copies Delivered To			Specified Date for Submission	Max Date	Date of Response	Notes
						Approved	Approved as Noted	Revise & Resubmit	Rejected	File	Site	Contractor				
1	E9	1	Electricity Network for Site Office	Dijlah Establishment Contr. Const.	15/12/2020	X				X	X	X			21/12/2020	
2	E10	1	Electrical Shop Drawing/ I Hay Al Iskan Basic Mixed School- Jerash	Dijlah Establishment Contr. Const.	15/12/2020			X				X			21/12/2020	Providing coordinated drawings for electrical works with approved architectural and mechanical drawings. 2. Providing coordinated drawings for elevator with mechanical works. 3. Providing wall section for all architectural spaces to clarify the dimensions and distances between sockets, switches and wall fans for all electrical works on walls, drawings shall be made to scale not less than 1:50. 4. Providing transformer location approval in coordination with the electricity company. 5. Referring to Vol.2- Technical Specification-Section 16730-1.10- provide the General Directorate of Civil Defense approval for the fire drawings. 6. Notes on drawings shall be taken into considerations. 7. Provide a detailed drawing for the electrical works in labs furniture, detailed drawing shall be made to scale not less than 1:20.
3	E10	2	Shop Drawing for Lightning System	Dijlah Establishment Contr. Const.	22/12/2020			X				X			28/12/2020	1- Earthing's pits shall be coordinated with rain water and sewerage manholes in addition to all mechanical and electrical services. 2- Roof plan for lightning system shall be coordinated with the approved shop drawing for mechanical equipment roof layout. 3- You are requested to submit 3 copies of the said drawings.

3.2.2 Elect. Materials Submittal

Wahib Medanat Consultant Engineers

Electrical Materials Submittal Tracking LOG																
Date:		Supervision Engineer: Wahib Medanat Consultant Engineers														
Project: 10/2019/USAID/SKEP/3/2		Contractor: Dijlah Est. Constr. Contr.														
Rep no.: 3		Site:														
No.	Item Type	Revision	Item Name	Received From	Date Received	Status				Copies Delivered To			Specified Date for Submission	Max Date	Date of Response	Notes
						Approved	Approved as Noted	Revise & Resubmit	Rejected	File	Site	Contractor				
1	E-3	1	Wiring Devices and Isolating Switch	Dijlah Establishment Contr. Const.	29/11/2020	X				X		X			3/12/2020	
2	E-6		Fire Detection System	Dijlah Establishment Contr. Const.	28/11/2020		X			X		X			7/12/2020	
3	E-7		Fire Alarm Cable	Dijlah Establishment Contr. Const.	28/11/2020	X				X		X			7/12/2020	
4	E-5	1	Distribution Boards	Dijlah Establishment Contr. Const.	29/11/2020	X				X		X			3/12/2020	
5	E-11		Cable Tray	Dijlah Establishment Contr. Const.	30/11/2020											2/1/3138
6	E-12		Uninterruptible Power Supplies (UPS)	Dijlah Establishment Contr. Const.	01/12/2020				X	X		X			7/12/2020	
7	E-13		Main Distribution Boards, MCC & DBEX	Dijlah Establishment Contr. Const.	7/12/2020			X		X		X			13/12/2020	
8	E-8		Elevators	Dijlah Establishment Contr. Const.	7/12/2020			X		X		X			15/12/2020	
9	E-9	1	Electricity Network for Site Office	Dijlah Establishment Contr. Const.	15/12/2020	X				X		X			21/12/2020	
11	E-13	1	MDB, MCC, and DB-EX	Dijlah Establishment Contr. Const.	17/12/2020		X			X		X			21/12/2020	
13	E-15		Public Address System	Dijlah Establishment Contr. Const.	23/12/2020				X	X		X			27/12/2020	
15	E-16		Audio/Video System	Dijlah Establishment Contr. Const.	23/12/2020			X		X		X			27/12/2020	
16	E-12	1	UPS	Dijlah Establishment Contr. Const.	21/12/2020			X		X		X			27/12/2020	
17	E-17		CC TV System	Dijlah Establishment Contr. Const.	26/12/2020				X	X		X			27/12/2020	
18	E-14		Lighting Fixtures and Poles	Dijlah Establishment Contr. Const.	21/12/2020			X		X		X			27/12/2020	

Annex -3-

3.3 Mechanical Submittals

3.3.1 Mech. Shop Drawings

3.3.2 Mech. Materials Submittal

3.3.1 Mech. Shop Drawings

Wahib Medanat Consultant Engineers

Mechanical Shop Drawings Tracking LOG																
Date:		Supervision Engineer: Wahib Medanat Consultant Engineers														
Project: 10/2019/USAID/SKEP/3/2		Contractor: Dijlah Est. Constr. Contr.														
Rep no.: 3		Site:														
No.	Drawing REF.	Revision	Drawing Name	Received From	Date Received	Status				Copies Delivered To			Specified Date for Submission	Max Date	Date of Response	Notes
						Approved	Approved as Noted	Revise & Resubmit	Rejected	File	Site	Contractor				
1	M-2	1	Site Plan Shop Drawing (Drainage and Rain Water)	Dijlah Est. Const. Contr.	23/12/2020				X						26/12/2020	
2																
3																
4																
5																
6																
7																
8																
9																

3.3.2 Mech. Materials Submittals

Wahib Medanat Consultant Engineers

Mechanical Materials Submittal Tracking LOG																
Date:		Supervision Engineer: Wahib Medanat Consultant Engineers														
Project: 10/2019/USAID/SKEP/3/2		Contractor: Dijlah Est. Constr. Contr.														
Rep no.: 3		Site:														
No.	Item Type	Revision	Item Name	Received From	Date Received	Status				Copies Delivered To			Specified Date for Submission	Max Date	Date of Response	Notes
						Approved	Approved as Noted	Revise & Resubmit	Rejected	File	Site	Contractor				
1	M-12		Acrylic Solid Surface	Dijlah Establishment Contr. Const.	05/12/2020				X	X		X			09/12/2020	
2	Cast Iron Radiator		Cast Iron Radiator	Dijlah Establishment Contr. Const.	3/12/2020			X		X		X			9/12/2020	
3	M- 11		Galvanized Steel Sheets for Duct Work	Dijlah Establishment Contr. Const.	05/12/2020				X	X		X			09/12/2020	
4	M- 13		PolyPropylene Pipes and Fittings	Dijlah Establishment Contr. Const.	05/12/2020			X		X		X			09/12/2020	
5	M- 14		Steel Fittings	Dijlah Establishment Contr. Const.	05/12/2020		X			X		X			09/12/2020	
6	M- 11	1	Galvanized Steel Sheets for Duct Work	Dijlah Establishment Contr. Const.	13/12/2020				X	X		X			15/12/2020	
7	M- 15		Electric Water Heater	Dijlah Establishment Contr. Const.	13/12/2020			X		X		X			15/12/2020	
8	M- 16		Duct Accessories, Volume Damper, Flixible Duct Connector	Dijlah Establishment Contr. Const.	13/12/2020				X	X		X			15/12/2020	
9	M- 19		Duct Accessories, Volume Damper, Flixible Duct Connector	Dijlah Establishment Contr. Const.	13/12/2020			X		X		X			15/12/2020	
10	M- 20		Pipe & Duct Insulation	Dijlah Establishment Contr. Const.	13/12/2020			X		X		X			15/12/2020	
11	M- 18		Air Outlet	Dijlah Establishment Contr. Const.	13/12/2020			X		X		X			15/12/2020	
12	M- 21		Fire Hose Cabinet & Fire Extinguisher	Dijlah Establishment Contr. Const.	14/12/2020			X		X		X			15/12/2020	
13	M- 17		Duct Accessories, Volume Damper, Flixible Duct Connector	Dijlah Establishment Contr. Const.	13/12/2020			X		X		X			15/12/2020	
14	M- 9	1	Radiator	Dijlah Establishment Contr. Const.	13/12/2020			X		X		X			15/12/2020	
15	M- 25		Fan	Dijlah Establishment Contr. Const.	16/12/2020			X		X		X			19/12/2020	

3.3.2 Mech. Materials Submittals

Wahib Medanat Consultant Engineers

No.	Item Type	Revision	Item Name	Received From	Date Received	Status				Copies Delivered To			Specified Date for Submission	Max Date	Date of Response	Notes
						Approved	Approved as Noted	Revise & Resubmit	Rejected	File	Site	Contractor				
16	M-24		Valve	Dijlah Establishment Contr. Const.	16/12/2020			X		X		X			19/12/2020	
17	M-23		Split Unit	Dijlah Establishment Contr. Const.	16/12/2020			X		X		X			19/12/2020	
18	M-22		Roof Top Package	Dijlah Establishment Contr. Const.	16/12/2020			X		X		X			19/12/2020	
19	M-32		Automatic Air Separator	Dijlah Establishment Contr. Const.	21/12/2020			X		X		X			26/12/2020	
20	M-31		Expansion Vessel	Dijlah Establishment Contr. Const.	21/12/2020			X		X		X			26/12/2020	
21	M-33		Heating and Water Cabinets	Dijlah Establishment Contr. Const.	23/12/2020			X		X		X			26/12/2020	
22	M-26		All Pumps	Dijlah Establishment Contr. Const.	21/12/2020			X		X		X			26/12/2020	
23																
24																
25																
26																
27																
28																
29																
30																

Annex -3-

3.4 Civil Submittals

3.4.1 Civil Shop Drawings

3.4.2 Civil Materials Submittal

3.4.1 Civil Shop Drawings

Wahib Medanat Consultant Engineers

Civil Shop Drawings Tracking LOG																		
Date:		Supervision Engineer: Wahib Medanat Consultant Engineers																
Project:		10/2019/USAID/SKEP/3/2		Contractor:		Dijlah Est. Constr. Contr.												
Rep no.:		3		Site:														
No.	Drawing REF.	Revision	Drawing Name	Received From	Date Received	Status				Copies Delivered To			Specified Date for Submission	Max Date	Date of Response	Notes		
						Approved	Approved as Noted	Revise & Resubmit	Rejected	File	Site	Contractor						
Hay AL-Iskan basic mixed school																		
1	S1-S15A	0	Single footing, combiend footing and raft foundation	Eng. Amer khewlih	28/10/2020				/	/	/		24/10/2020	5/11/2020	9/11/2020			
2	S1-S15A	1	Single footing, combiend footing and raft foundation	Eng. Amer khewlih	24/11/2020				/	/	/		24/10/2020	5/11/2020	26/11/2020			
3	S1-S15A	2	Single footing, combiend footing and raft foundation	Eng. Amer khewlih	29/11/2020		/			/	/		24/10/2020	5/11/2020	1/12/2020			
4	S1-S15A	3	Single footing, combiend footing and raft foundation	Eng. Amer khewlih	1/12/2020				/	/	/		24/10/2020	5/11/2020	3/12/2020			
5	S15B-S30	0	column from footing to end floor	Eng. Amer khewlih	28/10/2020				/	/	/		29/10/2020	11/11/2020	9/11/2020			
6	S15B-S30	1	column from footing to end floor	Eng. Amer khewlih	29/11/2020			/		/	/		29/10/2020	11/11/2020	1/12/2020			
7	S15B-S30	2	column from footing to end floor	Eng. Amer khewlih	1/12/2020		/			/	/		29/10/2020	11/11/2020	3/12/2020			
8	S15B-S30	0	S.O.G REIN. Basement floor	Eng. Amer khewlih	28/10/2020				/	/	/		4/11/2020	17/11/2020	9/11/2020			
9	S15B-S30	1	S.O.G REIN. Basement floor	Eng. Amer khewlih	29/11/2020			/		/	/		4/11/2020	17/11/2020	1/12/2020			
10	S15B-S30	2	S.O.G REIN. Basement floor	Eng. Amer khewlih	1/12/2020		/			/	/		4/11/2020	17/11/2020	3/12/2020			
11	S15B-S30	0	S.O.G REIN. GROUND floor	Eng. Amer khewlih	28/10/2020				/	/	/		4/11/2020	17/11/2020	9/11/2020			
12	S15B-S30	1	S.O.G REIN. GROUND floor	Eng. Amer khewlih	29/11/2020			/		/	/		4/11/2020	17/11/2020	1/12/2020			

3.4.1 Civil Shop Drawings

Wahib Medanat Consultant Engineers

No.	Drawing REF.	Revision	Drawing Name	Received From	Date Received	Status				Copies Delivered To			Specified Date for Submission	Max Date	Date of Response	Notes
						Approved	Approved as Noted	Revise & Resubmit	Rejected	File	Site	Contractor				
13	S15B-S30	2	S.O.G REIN. GROUND floor	Eng. Amer khewlih	1/12/2020		/			/		/	4/11/2020	17/11/2020	3/12/2020	
14	S31-S57	0	STRIP FOOTING REINF.	Eng. Amer khewlih	28/10/2020				/	/		/	24/10/2020	5/11/2020	9/11/2020	
15	S31-S57	1	STRIP FOOTING REINF.	Eng. Amer khewlih	30/11/2020			/		/		/	24/10/2020	5/11/2020	9/12/2020	
16	S31-S57	2	STRIP FOOTING REINF.	Eng. Amer khewlih	15/12/2020	/							24/10/2020	5/11/2020	17/12/2020	
17	S58-S73J	0	CORE REINF.	Eng. Amer khewlih	28/10/2020				/				29/10/2020	11/11/2020	9/11/2020	
18	S58-S73J	1	CORE REINF.	Eng. Amer khewlih	19/12/2020			/					29/10/2020	11/11/2020	22/12/2020	
19	S58-S73J	0	SHEAR WALL REINF	Eng. Amer khewlih	28/10/2020				/				29/10/2020	29/10/2020	9/11/2020	
20	S58-S73J	1	SHEAR WALL REINF	Eng. Amer khewlih	19/12/2020			/					29/10/2020	29/10/2020	22/12/2020	
21	128A-160	0	BOUNDARY WALL REINF. (EXTERNAL WORK)# 1	Eng. Amer khewlih	28/10/2020				/				30/1/2021	11/2/2021	9/11/2020	
22	128A-160	1	BOUNDARY WALL REINF. (EXTERNAL WORK)# 1	Eng. Amer khewlih	9/12/2020		/						30/1/2021	11/2/2021	15/12/2020	
23	128A-160	2	BOUNDARY WALL REINF. (EXTERNAL WORK)# 1	Eng. Amer khewlih	16/12/2020	/							30/1/2021	11/2/2021	16/12/2020	
24	128A-160	0	BOUNDARY WALL REINF. (EXTERNAL WORK)# 2	Eng. Amer khewlih	28/10/2020				/				30/1/2021	11/2/2021	9/11/2020	
25	128A-160	1	BOUNDARY WALL REINF. (EXTERNAL WORK)# 2	Eng. Amer khewlih	1/12/2020			/					30/1/2021	11/2/2021	3/12/2020	

3.4.1 Civil Shop Drawings

Wahib Medanat Consultant Engineers

No.	Drawing REF.	Revision	Darwing Name	Received From	Date Received	Status				Copies Delivered To			Specified Date for Submission	Max Date	Date of Response	Notes
						Approved	Approved as Noted	Rvise & Resubmit	Rejected	File	Site	Contractor				
26	128A-160	2	BOUNDARY WALL REINF. (EXTERNAL WORK)# 2	Eng.Amer khewlih	9/12/2020		/						30/1/2021	11/2/2021	12/12/2020	
27	128A-160	3	BOUNDARY WALL REINF. (EXTERNAL WORK)# 2	Eng.Amer khewlih	15/12/2020	/							30/1/2021	11/2/2021	16/12/2020	
28	SFP100	0	EXCAVATION	Eng.Amer khewlih	21.NOV.2020			/					20/10/2020	22/10/2020	23.NOV.2020	
29	SFP101	1	EXCAVATION	Eng.Amer khewlih	30.NOV.2020			/					20/10/2020	22/10/2020	1.DEC.2020	
30	SFP102	2	EXCAVATION	Eng.Amer khewlih	1.DEC.2020		/						20/10/2020	22/10/2020	1.DEC.2020	
31	AP001	0	REDUCE LEVEL	Eng.Amer khewlih	26/12/2020			/							27/12/2020	
32	AP002	1	REDUCE LEVEL	Eng.Amer khewlih	27/12/2020		/								27/12/2020	

3.4.1 Civil Shop Drawings

Wahib Medanat Consultant Engineers

No.	Drawing REF.	Revision	Drawing Name	Received From	Date Received	Status				Copies Delivered To			Specified Date for Submission	Max Date	Date of Response	Notes
						Approved	Approved as Noted	Revise & Resubmit	Rejected	File	Site	Contractor				
Jumana Bint Abi Taleb Basic Mixed School- Amman																
33	01	0	foundation details (1-9)	dijla - eng,sahar	7.nov.2020				/		/				9.nov.2020	
34	01	1	foundation details (1-9)	dijla - eng,sahar	16.nov.2020		/				/				16.nov.2020	
35	02	0	foundation details (10-14)	dijla - eng,sahar	9.nov.2020				/		/				9.nov.2020	
36	02	1	foundation details (10-14)	dijla - eng,sahar	16.nov.2020			/			/				18.nov.2020	
37	02	2	foundation details (10-14)	dijla - eng,sahar	19.nov.2020	/					/				19.nov.2020	
38	03	0	walls under SOG	dijla - eng,sahar	17.nov.2020				/		/				26.nov.2020	
39	03	1	walls under SOG	dijla - eng,sahar	2-Dec-2020		/				/				6-Dec-20	
40	04	0	SOG	dijla - eng,sahar	24.NOV				/		/				2.Dec	
41	04	1	SOG	dijla - eng,sahar	9.Dec		/				/				17.Dec	
42	05	0	Boundary wall -north east -north west	dijla - eng,sahar	29.NOV				/		/				12.Dec	
43	05	1	Boundary wall -north east -north west	dijla - eng,sahar	17.Dec		/				/				17.Dec	
44	06	0	Tie Beams	dijla - eng,sahar	7.Dec			/			/				7.Dec	
45	06	1	Tie Beams	dijla - eng,sahar	19.Dec	/					/				24.Dec	
46	07	0	Boundary wall - south east	dijla - eng,sahar	21.Dec		/				/				24.Dec	

3.4.1 Civil Shop Drawings

Wahib Medanat Consultant Engineers

No.	Drawing REF.	Revision	Drawing Name	Received From	Date Received	Status				Copies Delivered To			Specified Date for Submission	Max Date	Date of Response	Notes
						Approved	Approved as Noted	Revise & Resubmit	Rejected	File	Site	Contractor				
Thahr Al Sarow Basic School for Boys																
47	STR-003	2	Steel reinforcement for columns	dijla- Abd Almalik Husban	6/12/2020			/							10/12/2020	
48	STR-003	3	Steel reinforcement for columns	dijla- Abd Almalik Husban	17/12/2020			/							23/12/2020	
49	STR-003	4	Steel reinforcement for columns	dijla- Abd Almalik Husban	24/12/2020		/								27/12/2020	
50	STR-004		Steel reinforcement for tie beams	dijla- Abd Almalik Husban	19/12/2020											File
51	STR-006	1	Steel reinforcement for boundary wall 1 part 1	dijla- Abd Almalik Husban	13/12/2020		/								15/12/2020	
52	STR-007	1	Steel reinforcement for Guard house (footing-columns-walls)	dijla- Abd Almalik Husban	13/12/2020		/								16/12/2020	
53	STR-008	0	Ground Beam (STR-GB-001/ STR-GB-002)	dijla- Abd Almalik Husban	30/11/2020			/							1/12/2020	
54	STR-008	1	Ground Beam (STR-GB-001/ STR-GB-002)	dijla- Abd Almalik Husban	6/12/2020		/								10/12/2020	
55	STR-009	0	Boundary wall (2) Footing	dijla- Abd Almalik Husban	14/12/2020		/								17/12/2020	
56	STR-010	0	Boundary wall (2) Walls	dijla- Abd Almalik Husban	16/12/2020		/								19/12/2020	
57	STR-011	0	Cyclopean	dijla- Abd Almalik Husban	19/12/2020	/									19/12/2020	
58	STR-012	0	Boundary wall (3) part 1- Foundation	dijla- Abd Almalik Husban	20/12/2020	/									22/12/2020	
59	STR-013	0	Boundary wall (3) part 1- Walls	dijla- Abd Almalik Husban	23/12/2020		/								27/12/2020	

Annex -4-

Site Visits Reports & Meetings

4.1 Meetings

4.2 Site Visits

Annex -4-

4.1 Coordination and Progress Meetings

Progress Meeting on Dec 08, 2020 – Thahr Al Sarow Basic School for Boys- Jerash (Refer to Table 2. Coordination & Progress Meetings – Page 11)

Minutes of Meeting

Subject: Construction Site Visits – SKEP III



Location: Wahib Medanat Consultant Engineers Office
Date: December 8, 2020
Time: 13:00
Present:

**WAHIB
MEDANAT**
consultant engineers
مهندسون استشاريون

1. Eng. Tarek Rashdan, PMS, USAID
2. Eng. Mike McGovern, Chief of Party, Trigon
3. Eng. Osama Obaid, SCM, Trigon
4. Eng. Suhair Amarin, Project Director, Medanat
5. Eng. Natheer Amarin, Project Manager, Medanat
6. Eng. Sawsan Al-Yousef, Resident Engineer, Medanat
7. Eng .Alaa E'leimat, Site Engineer, Medanat
8. Muhannad Abu Rsheid, Genenral Manager, Dijlah
9. Eng. Amer Abdel Ghani, Project Manager, Dijlah
10. Eng. Sufian Al shaer, Site Engineer, Dijlah
11. Eng. Abd Elmalaek Husban, Site Engineer, Dijlah

A Visit was conducted to Hay Al Ishan, Thahr Al Sarow Sites in order to discuss the Work Progress.

Purpose of the Visit

I. Hay Al Iskan & Thahr Al Sarow (Schools)

- I.1. Mike and Tarek took a tour inside the construction sites.
- I.2. Mike said :
 - I.2.1 Nobody is allowed to enter the construction site except the authorized persons.
 - I.2.2 As a suggestion, the assigned contract management specialist by Medanat could prepare (monthly) -in coordination with the team and the Contractor-Contract Compliance Audit Table, in order to solve any confusion with the documents.
 - I.2.3 A list that includes the sub - contractors should be submitted, Muhannad stated that there are no sub- contractors.
 - I.2.4 Regarding the required shoring, a letter should be sent to Basema to give a brief about the status and to obtain the USAID approval since it is an item of the provisional sums. Tarek confirmed and added especially that the Contractor started with the work.
 - I.2.5 All the Contract Documents should be available at the site.
- I.3. Tarek asked about the status of the Mobilization, Sawsan stated that almost 99 % and the Engineer recommended the second part of the down payment.

I

Minutes of Meeting

Subject: Construction Site Visits – SKEP III



- I.4. Medanat monthly report should also be sent to the Contractor.
- I.5. Materials should be submitted by RFI and with a cover letter, a substitution should be approved by MPWH and USAID.
- I.6. In order to grant the success of the project, Medanat and Dijlah should work as a team.
- I.7. Variation orders, claims and time extensions should be submitted in forms. Medant should train the Contractor how to use them.
- I.8. Work schedule is very important and should be updated as stated in the Contract.





Thahr Al Sarow Basic School for Boys- Jerash

Meeting at the Supervision Site Office



Part of the Site Visit



Thahr Al Sarow
Basic School
for Boys-
Jerash

Mike discussing
the Safety
measures on
Site



Thahr Al
Sarow Basic
School for
Boys- Jerash

Part of the
Site Visit

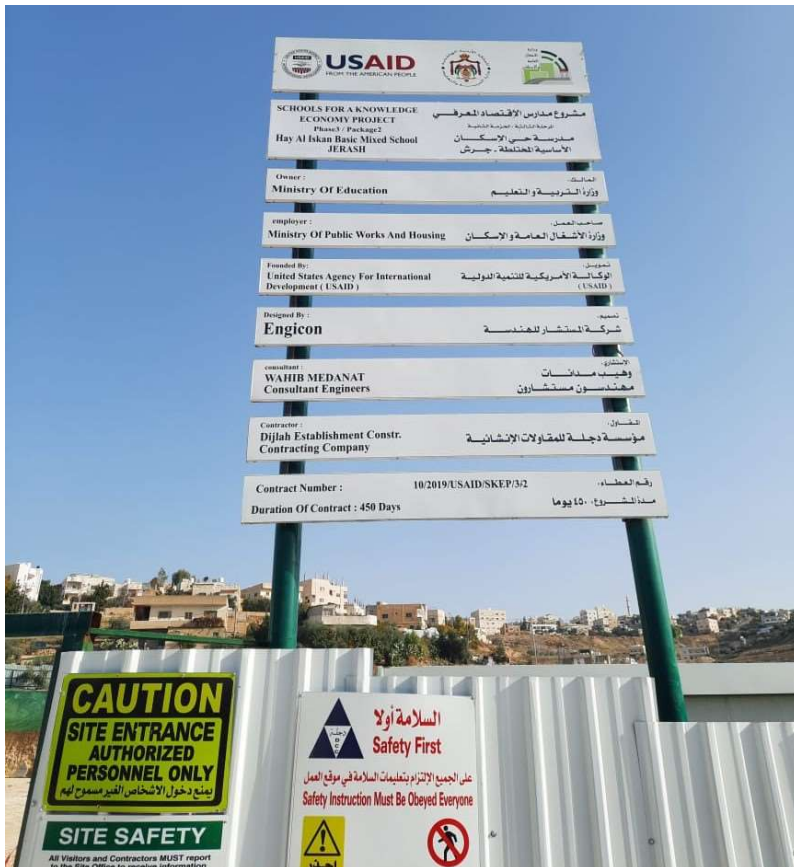
Annex -4-

4.2 Site Visits

Site Visit on Dec 8, 2020 – Hai Al Iskan Basic Mixed School- Jerash
 (Refer to Table 3. Site Visits – Page 11)



All parties discussing the preparation stage of the shoring system



Site Visit on Dec 10, 2020 – Jumana Bint Abi Taleb Basic Mixed School- Amman
(Refer to Table 3. Site Visits – Page 11)



Eng. Basema from MPWH discussing the actual status of the North-East boundary wall with Medanat site staff

Site Visit on Dec 15, 2020- Hay Al Iskan Basic Mixed School- Jerash
(Refer to Table 3. Site Visits - Page 11)



SKEP III Site Visit Report

Consultant	Wahib Medanat Consultant Engineer	Rep No.	008
Contractor	Dijlah Establishment Constr. Contracting	Tender No.	(11/2019/USAID/SKEP/3/S) Schools for a Knowledge Economy Project (SKEP) - Phase (3) Package (1, 2)
Site Name	Hay Al Iskan Basic Mixed School- Jerash	Day/ Date	Tue. 15/12/2020
Duration of Project	450 Calendar Days	Total Project Budget	8,314,983.735 JD

No.	Visitors		Remarks
1	Suhair Amarin	Project Dir.	
3	Akram Khammes	Electrical Eng.	
4	Marwan Sanna'a	Mech. Eng.	
5	Wahib Medanat	General Manager	
Visit Notes			
No.	Description		
1	Follow up the execution of the shoring systems.		
2	Follow up the excavation works.		
3	Discussing some safety issue.		
Attached			
<input type="checkbox"/> 1:			

1

CC: Project Director

\\Server\data\E\PROJECTS FILES\368\Site Visit Report\DEC\Site Visit Report- 008.docx
Form # QP SUP 01-18, Rev.1

Site Visit on Dec 15, 2020– Thahr Al Sarow Basic School for Boys- Jerash
(Refer to Table 3. Site Visits – Page 11)



**WAHIB
MEDANAT**
consultant engineers



SKEP III

Site Visit Report

Consultant	Wahib Medanat Consultant Engineer	Rep No.	007
Contractor	Dijlah Establishment Constr. Contracting	Tender No.	(11/2019/USAID/SKEP/3/S) Schools for a Knowledge Economy Project (SKEP) - Phase (3) Package (1, 2)
Site Name	Thahr Al Sarow Basic School for Boys- Jerash	Day/ Date	Tue. 15/12/2020
Duration of Project	450 Calendar Days	Total Project Budget	8,314,983.735 JD

No.	Visitors		Remarks
1	Suhair Amarin	Project Dir.	
2	Akram Khammes	Electrical Eng.	
3	Marwan Sonna'a	Mech. Eng.	
4	Wahib Medanat	General Manager	
Visit Notes			
No.	Description		
1	Follow up the progress of the boundary walls.		
2	Discussing the additional quantities of the relocated water tank.		
3	Discussing the requested time extension (35 days)		
Attached			
<input type="checkbox"/> 1:			

1

- CC: Project Director
-

\\Server\data\E\PROJECTS FILES\368\Site Visit Report\DEC\Site Visit Report- 006.docx
Form # QP SUP 01-18, Rev.1

Site Visit on Dec 21, 2020– Jumana Bint Abi Taleb Basic Mixed School- Amman
(Refer to Table 3. Site Visits – Page 12)



SKEP III

Site Visit Report

**WAHIB
MEDANAT**
consultant engineers

Consultant	Wahib Medanat Consultant Engineer	Rep No.	009
Contractor	Dijlah Establishment Constr. Contracting	Tender No.	(11/2019/USAID/SKEP/3/S) Schools for a Knowledge Economy Project (SKEP) - Phase (3) Package (1, 2)
Site Name	Jumana Bint Abi Taleb Basic Mixed School- Amman	Day/ Date	Mon. 21/12/2020
Duration of Project	450 Calendar Days	Total Project Budget	8,314,983.735 JD

No.	Visitors		Remarks
1	Suhair Amarin	Project Dir.	
3	Akram Khammes	Electrical Eng.	
4	Marwan Sonna'a	Mech. Eng.	
5	Wahib Medanat	General Manager	
Visit Notes			
No.	Description		
1	Follow up the progress of the boundary walls.		
2	Discussing the issue of the drainage of the concrete water tank.		
3	Discussing the Contractor's proposal regarding the execution of the mock- up rooms.		
Attached			
<input type="checkbox"/> 1:			

1

- CC: Project Director

Site Visit on Dec 23, 2020 – Jumana Bint Abi Taleb Basic Mixed School- Amman
(Refer to Table 3. Site Visits – Page 12)



Discussion during the Visit



Discussion during the Visit



Eng.
Osama
Watching
Boundary
Wall Works



Work in
boundary
walls

Annex -5-

RFIs Tracking Logs

5.1 RFIs – Designer

5.2 RFIs – Contractor

5.1 RFIs - Designer

Wahib Medanat Consultant Engineers

REQUEST FOR INFORMATION TRACKING LOG						
School for Knowledge Economy Project (SKEP III)						
ISSUED BY WAHIB MEDANAT CONSULTANT ENGINEER						
ISSUED TO ENGICON CONSULTANT						
RFI.	Name of School	Description		Details of Designer Response		File Location
		Date		Date		
011	Thahr Al Sarow Basic School for Boys/Jumana Bint Abi Taleb Basic Mixed School	06/12/2020	C6 in Jumana Bint Abi Taleb School –lower and upper foundations plans dimensions and reinforcement of the tie beam (TB5) in Thahr Al Sarow School	07/12/2020	..\\RFI- FORMS\Designer Reply- RFI 011.pdf	..\\RFI- FORMS\RFI- 011.docx
012	package 2 Schools	06/12/2020	elevators specifications			..\\RFI- FORMS\RFI- 012.docx
013	Hay Al Iskan Basic Mixed School	12/12/2020	UPS	14/12/2020	..\\RFI- FORMS\Designer Reply- RFI 013.pdf	..\\RFI- FORMS\RFI- 013.docx
014	package 2 Schools	20/12/2020	Steel reinforcement for stirrups	21/12/2020	..\\RFI- FORMS\Designer Reply- RFI 014.pdf	..\\RFI- FORMS\RFI- 014.docx
015	package 2 Schools	27/12/2020	concrete water tank and the drainage for related pump rooms will be connected to the main sewage network.	28/12/2020	..\\RFI- FORMS\Designer Reply- RFI 015.pdf	..\\RFI- FORMS\RFI- 015.docx

5.2 RFIs - Contractor

Wahib Medanat Consultant Engineers

REQUEST FOR INFORMATION TRACKING LOG										
School for Knowledge Economy Project (SKEP III), Package 2										
Hay Al Iskan Basic Mixed School- Jerash										
ISSUED WAHIB MEDANAT CONSULTANT ENGINEER										
ISSUED TO: DIJLAH ESTABLISHMENT CONSTR. CONTRACT										
Thahr Al Sarow Basic school for Boys-Jerash:										
Jumana Bint Abi Taleb Basic Mixed School-Amman:										
Hay Al Iskan Basic Mixed School- Jerash:										
RFI #	Name of School	Details of RFI			Status		Details of Consultant Response		File Location	
		Date	Description	Field	Sent to Designer	Answered directly from	Date	Description	From Site	From Office
004	Jumana Bint Abi Taleb Basic Mixed School	03/12/2020	Structural Note (C6)	Structural	X				J:\RFI- from Contractor\Jumana Bint Abi Taleb Basic Mixed School\RFI-004.docx	
005	Thahr Al Sarow Basic School for boy	02/12/2020	Slab on grade mesh steel diameter	Structural	X		Refer to Hay Al Iskan Rfi 002	J:\RFI- from Contractor\Thahr Al-Sarow Basic School for Boys\RFI-005 Attach.docx	Sent to Eng. Alaa Eleimat	
003-E	Hay Al Iskan Basic Mixed School	9/12/2020	Electrical UPS	Electrical		X	15/12/2020 Refer to Hay Al Iskan Rfi 003-E	J:\RFI- from Contractor\Hay Al Iskan Basic Mixed School\RFI hay al iskan\RFI003E.pdf	Sent to Eng. Islam Obaidat	
006	Thahr Al Sarow Basic School for boy	02/12/2020	Slab on grade mesh steel diameter	Structural		X	8/12/2020 SOG level to be according to Architecture drawings (105.85,105.4)	J:\RFI- from Contractor\Thahr Al-Sarow Basic School for Boys\RFI-006.jpg	Sent to Eng. Alaa Eleimat	
007	Thahr Al Sarow Basic School for boy	02/12/2020	Slab on grade mesh steel diameter	Structural		X	14/12/2020 SOG level to be according to Architecture drawings (105.85,105.4)	J:\RFI- from Contractor\Thahr Al-Sarow Basic School for Boys\RFI-006.jpg	Sent to Eng. Alaa Eleimat	

Annex -6-

Lab-Tests Results Tracking Log

Item Description & Summary	Description of Works to be Tested	Estimated No. of Tests to be Conducted	Sample Location	Represented Quantity	Test Date	Test Result (Pass/Fail)	Testing Report No.	Corrective Action	Test Report Location	Notes
<p>Submittals: Details, calculations and shop drawings showing the method of excavation, location, any other details : Following reports to Engineer from laboratory: Certification of granular fill and test reports on borrow materials. The actual unconfined compressive strength test reports.</p> <p>Section A Structural Fill 1. Refer to table 1.1 Technical Specifications (Earth Retention)</p> <p>Section A. Refer to the General Specifications for Buildings, the First Edition, Part 1 Works and Architectural issued by the Public Works and Housing, Edition No. 2 "Excavation Works"</p>		1	Excavated Material	4000 m3	14/12/2020	pass	25281/20/01/53		RSS	
<p>Submittals: Details, calculations and shop drawings showing the method of excavation, location, any other details : Following reports to Engineer from laboratory: Certification of granular fill and test reports on borrow materials. The actual unconfined compressive strength test reports.</p> <p>Section A Structural Fill 1. Refer to table 1.1 Technical Specifications (Earth Retention)</p>	Excavated Material	1	A-C/4-6	8000M3	22/11/2020	pass	-530105		ROYAL SCIENTIFIC SOCIETY	

<p>atory: Certification of granular fill and on borrow materials. ne actual unconfined compressive y test reports.</p>	Visual Inspection	1	Excavation of the building	/	23/12/2020	PASS	S17000158-INSP.1		ACES	
<p>s A Structural Fill 1. Refer to table chnical Specifications (Earth</p>										
<p>on A. Refer to the General cifications for Buildngs, the First I Works and Architectural issued by Public Works and Housing, Edition o. 2 "Excavation Works"</p>										

Excavation Description & Summary	Description of Works to be Tested	Estimated No. of Tests to be Conducted	Sample Location	Represented Quantity	Test Date	Test Result (Pass/F ail)	Testing Report No.	Corrective Action	Test Report Location	Notes
<p>Excavations Excavation of granular bed and surround, to be backfilled using selected material free from all rocks, large hard builder's debris of greater than 100mm shall be in layers of 150mm, each layer shall be compacted over the full width of the trench. Compaction rollers and vibrators shall be used to compact the fill when the cover over the excavation exceeds 0.5 meters.</p>										

Excavation Description & Summary	Description of Works to be Tested	Estimated No. of Tests to be Conducted	Sample Location	Represented Quantity	Test Date	Test Result (Pass/F ail)	Testing Report No.	Corrective Action	Test Report Location	Notes
<p>QUALITY CONTROL Certified copies of mill test report of concrete reinforcing, indicating physical analysis.</p>	Blinding for Footings		Below SOG							
<p>INSURANCE Refer to the General Technical Specifications in the First Volume of Civil Works and Structures issued by the Ministry of Public Works and Housing, Edition 2, 1996- Bill No.3" Concrete: Concrete shall consist of concrete with</p>	Reinforced for Footings		Below SOG							
	Columns Necks		Below SOG							
	Tie Beams		Below SOG							

Item Description & Summary	No. of Works to be Tested	No. of Tests to be Conducted	Sample Location	Represented Quantity	Test Date	Result (Pass/Fail)	Testing Report No	Corrective Action	Report Location	Notes
2099 – Load bearing, Bonded, r Thin-set Ceramic Tile and stone A-2099 – Specifications for Ceramic -Set Method with Portland cement B-2099 – Specifications for										
2099 – Load bearing, Bonded, r Thin-set Ceramic Tile and stone A-2099 – Specifications for Ceramic -Set Method with Portland cement B-2099 – Specifications for										
2099 – Load bearing, Bonded, r Thin-set Ceramic Tile and stone A-2099 – Specifications for Ceramic -Set Method with Portland cement B-2099 – Specifications for Ceramic and Portland Cement Mortar Setting Set and Cement Mortar. on 09300 - Page 227- References										
Specification for Solid Concrete aving										
2099 – Load bearing, Bonded, r Thin-set Ceramic Tile and stone A-2099 – Specifications for										

ation Description & Summary	Description of Works to be Tested	Estimated No. of Tests to be Conducted	Sample Location	Represented Quantity	Test Date	Test Result (Pass/Fail)	Testing Report No	Corrective Action	Test Report Location	Notes
es , glavanised steel pipe (BS 1387)	pipe thickness , Max working pressure , composit material	1 samples	Site	ALL						RSS (Royal Scientific Society)

ation Description & Summary	Description of Works to be Tested	Estimated No. of Tests to be Conducted	Sample Location	Represented Quantity	Test Date	Test Result (Pass/Fail)	Testing Report No	Corrective Action	Test Report Location	Notes
polyvinyl chlorid (ASTM F 441 Schd-DIN 8079 PN16 and PN 25)	pipe thickness , Max working pressure , composit material	1 samples	Site	ALL						

ation Description & Summary	Description of Works to be Tested	Estimated No. of Tests to be Conducted	Sample Location	Represented Quantity	Test Date	Test Result (Pass/Fail)	Testing Report No	Corrective Action	Test Report Location	Notes
Polyvinyl Chloride BS 4660, 5481-EN-1401-1:1998	pipe thickness , Max working pressure , composit material	1 samples	Site	ALL						

ation Description & Summary	Description of Works to be Tested	Estimated No. of Tests to be Conducted	Sample Location	Represented Quantity	Test Date	Test Result (Pass/Fail)	Testing Report No	Corrective Action	Test Report Location	Notes
Polypropylene Pipes	pipe thickness , Max working pressure , composit material	1 samples	Site	ALL						

ation Description & Summary	Description of Works to be Tested	Estimated No. of Tests to be	Sample Location	Represented Quantity	Test Date	Test Result (Pass/F	Testing Report No	Corrective Action	Test Report Location	Notes
-----------------------------	-----------------------------------	------------------------------	-----------------	----------------------	-----------	---------------------	-------------------	-------------------	----------------------	-------

Annex -7-

Mobilization Tracking Log

26/11/2020

For Submission	Max. Date	Contractor Action	Date	Consultant Action	Date	Notes
	-	Provided	-	Done	-	Ready
ent Date	20/10/2020	Comply	19/10/2020	Done	-	Ready
	20/10/2020	Comply	04/10/2020	Done	11/10/2020	Ready
mmencement Date	04/11/2020	Comply	27/09/2020	Done	08/10/2020	Ready
ent Date	20/10/2020	Comply	27/09/2020	Done	11/10/2020	Ready
ent Date	20/10/2020	Comply	04/10/2020	Done	14/10/2020	Ready
ent Date	20/10/2020	Comply	-	-	-	Ready
ent Date	20/10/2020	Comply	-	Done	-	Ready
ent Date	-	Done	-	Done	-	-
ent Date	-	Done	-	Done	-	-
	-	Not Submitted	-	-	-	Contractor is Requested
ent Date	-	Available	-	Done	-	-
mmencement	21/02/2020	Not Done	-	-	-	Location stated on Site Plan by Contractor
ceipt of Letter of	03/06/2020	Done	11/10/2020	Done	-	Approved

or Submission	Max. Date	Contractor Action	Date	Consultant Action	Date	Notes
Receipt of Letter of	03/06/2021	Done	11/10/2020	Done	-	Approved
Notice to Proceed	21/10/2020	Slow Progress	-	Reminding Contractor	-	The Contractor started to submit Material Requests
	-	Done	14/10/2020	Done	-	All Recommended
	-	Comply	-	Done	-	-
	-	Provided	-	-	-	Original Software not available ** The Contractor promised to provide the original copies in very short time
	-	Provided	-	-	-	Available
	-	Not Prepared	-	-	-	Not Provided
	-	Provided	-	-	-	Provided
	-	Provided	-	-	-	Provided
	-	Provided	-	-	-	Available

Annex -8-

Non-Conformance Reports Tracking Log

Supervisor:				
Contractor:				
Site:				

Rate of Response	Description of NCR	Corrective action Required	Contractor Action	File Location	Closed Date
	the Caravan that is located on the edge of the excavation should be relocated to a safe place since it is exposed to fall at one of the sides down due to unstable condition. Site Memo No 35 attach.	Change the location of the office caravan due to the risk of its location in relation to the excavation of the building. According to the attached pictures, choose a safe and an appropriate place so that it is far from any collapses that may occur in the future.	* Shoring According to the contract requirement. * moving the caravans to safe places	..\..\Safety\Non-Conformance Reports\Non-Conformance Report - Hay Al-Iskan Basic Mixed School - Jerash (2).xlsx	
	Not abiding by contract's requirements regarding the safety issues, since: 1. your workers are using wooden ladder instead of scaffolding. 2. you did not provide safety path for pedestrian and workers which means that you are exposing the people to falling hazards. 3. housekeeping should be done immediately.	Immediate housekeeping and remove the wooden ladder from site.	Immediate housekeeping and remove the wooden ladder from site.	..\..\Safety\Non-Conformance Reports\WhatsApp Image 2020-12-30 at 12.07.33 (1).jpeg	

Annex -9-

Materials Submittals

- 9.1 Architectural Submittals
- 9.2 Electrical Submittals
- 9.3 Mechanical Submittals

- Summary of Submitted Materials

Projects (SKEP III) - Package 2

	Vendor List	Submitted Material	No. of Rev	Engineer Response
4.2 Natural Stone works				
	Marbeltone Quality for marble & granite Nassar group Al-Jabary Marble Amer Al-Khatib for stone Or equivalent	YES	Rev.05	Approved
ases nal walls orm untain pp	Marbeltone Quality for marble & granite Nassar group Al-Jabary Marble Amer Al-Khatib for stone Or equivalent	Yes	Rev.01	Contractor was requested to submit porcelain and Ceramic tiles samples as the selection of all required tiles colors will be reviewed and studied for approval as one color scheme
	Not Mentioned	Yes	rev.2	Not Approved

5 Metals				
ens	Not Mentioned	NO	NO	
d water tank	Not Mentioned	NO	NO	
oated for under k	Not Mentioned	NO	NO	
nd water tank	Not Mentioned	NO	NO	
	Not Mentioned	NO	NO	
roof	Not Mentioned	NO	NO	
g	Not Mentioned	NO	NO	
eltile trim- l- wall	Not Mentioned	NO	NO	

	Vendor List	Submitted Material	No. of Rev	Engineer Response
roof	Not Mentioned	NO	NO	
ground water tank	Not Mentioned	NO	NO	
ground water room	Not Mentioned	NO	NO	
external stairs	Not Mentioned	NO	NO	
al stairs and to mp.	Not Mentioned	NO	NO	
s, planters and d	Not Mentioned	NO	NO	
abled ramp.	Not Mentioned	NO	NO	
rail at entrance	Not Mentioned	NO	NO	
6.1 Custom Cabinets				
n, first aid room, teacher center, ed	Not Mentioned	NO	NO	
	Not Mentioned	NO	NO	
8. DOORS & WINDOWS				
mes	Not Mentioned	NO	NO	
ed doors	Not Mentioned	YES- Contractor submitted only door accessories	REV 1	Revise and resubmit
doors and curtain	curtain wall: Petra aluminum Co. AL-FAGEER INDUSTRIAL Co.	YES	REV 2	Revise and resubmit
	Raghad Kalbouneh & Partners Co- Tichnical Aluminum &Glass			

	Vendor List	Submitted Material	No. of Rev	Engineer Response
FINISHING				
Cement Colored	Not Mentioned	NO	NO	
	Not Mentioned	Yes	Rev.2	Approved - Contractor was requested to submit samples for the selected colors
s	Seasons	Yes	Rev.01	Approved as noted
	Marrazi tiles/ salah Shihadeh			
	Nabluse and Amad Or equivalent			
	Seasons	Yes	Rev.01	Approved as noted
	Marrazi tiles/ salah Shihadeh			
	Nabluse and Amad Or equivalent			
azzo	Not Mentioned	NO	NO	
	Not Mentioned	NO	NO	
les	Seasons	Yes	Rev.1	Approved as noted
	Marrazi tiles/ salah Shihadeh			
	Nabluse and Amad Or equivalent			
	Seasons	NO	Rev.01	Approved as noted
	Marrazi tiles/ salah Shihadeh			
	Nabluse and Amad Or equivalent			
e) for playground	Not Mentioned	NO	NO	
h paint	Jotun	YES	REV 1	SUPPLIER IS APPROVED- contractor has been requested to submit painting colors after submitting the required tiles samples as one color scheme
	Dulux			
	National Paints			
	Sipes Or equivalent			
ysulfide paint	Not Mentioned	NO	NO	
eilings	The Knauf Group	NO	NO	
	AMF- Ceilings Systems			
	Armstrong- Ceiling Systems Or equivalent			

	Vendor List	Submitted Material	No. of Rev	Engineer Response
10- SPECIALITIES				
Specialties (Toilet Accessories)	Bobbrick	NO	NO	
	Inda			
	Sonia			
	Not Mentioned	NO	NO	
11- EQUIPMENT				
Equipment	Not Mentioned	NO	NO	
	Maani	NO	NO	
	Protech	NO	NO	
	Not Mentioned	NO	NO	

(SKEP III) - Package 2

	Vendor List	Submitted Material	No. of Rev	Engineer Response
	- Schneider (Europe) - Legrand (Europe) - ABB (Europe) - Eaton (Europe) - GE (USA) - Hager (Europe)	yes	2	Approved as Noted
	- Schneider (Europe) - Legrand (Europe) - ABB (Europe) - Eaton (Europe) - GE (USA) - Hager (Europe)	Yes	2	Approved as Noted
	- APC (Europe) - Eaton (Europe) - GE (USA) - Legrand (France) - G-Tec (Italy) - ABB (Europe)	Yes	2	Revise and Re-Submit
	- Furse (UK) - Wallis (UK) - Kingsmill (UK)	Yes	2	Kingsmill (UK)
	- Schneider (Europe) - Legrand (Europe) - ABB (Europe) - Eaton (Europe) - GE (USA) - Hager (Europe)	Yes	1	Approved as Noted
	- Jordan New Cable Co (Jordan) - Cabelco (Jordan) - Gulf Cable (Jordan) - Ducab (UAE) - Tekab (UAE) - Top Cable (Spain)	Yes	1	Approved (Cabelco)

- Jordan New Cable Co (Jordan) - Cabelco (Jordan) - Gulf Cable (Jordan) - Ducab (UAE) - Tekab (UAE) - Top Cable (Spain)	Yes	1	Approved (Cabelco)
- MK (Europe) - MEM (Europe) - Legrand (Europe)	Yes	2	Approved
- MK (Europe) - ABB (Europe) - Eaton (Europe) - Legrand (Europe)	Yes	1	Approved
- Egatube (UK) - Decoduct (UAE) - Marshall Tufflex (UK) - Gulf Plastic (Jordan)	Yes	2	Approved (Gulf Plastic)
- Thorn (UK) - iGuzzini (Italy) - Luce (Italy) - Targetti (Italy) - Philips (Netherlands) - EAE (Turkey) - GE (USA) - Zumtobel (Europe) - Leviton (USA) - R2B (Germany)	Yes	1	Revise and Re-Submit
- MK (Europe) - MEM (Europe) - Legrand (Europe)	No	-	-
- Matthews (USA)	No	-	-
- Schneider (Europe) - Legrand (Europe) - ABB (Europe) - Eaton (Europe) - GE (USA) - Hager (Europe)	Yes	2	Approved as Noted
- Mitas (Turkey) - Babtain (KSA)	Yes	1	Revise and Re-Submit

	<ul style="list-style-type: none"> - Jordan New Cable Co (Jordan) - Cabelco (Jordan) - Gulf Cable (Jordan) - Ducab (UAE) - Tekab (UAE) - Top Cable (Spain) 	Yes	1	Approved (Cabelco)
	<ul style="list-style-type: none"> - Simplex (USA/Canada) - Notifier (USA) - EDWARD (UK) - Secutron (Canada) - Gent (UK) 	Yes	1	Approved as Noted
	<ul style="list-style-type: none"> - Leviton (USA) - AT&T (USA) - Legrand (France) - Digitus (Germany) - R&M (USA) 	No	-	-
	<ul style="list-style-type: none"> - Siemens - Ericsson - PanaSonic 	No	-	-
	-	No	-	-
em	<ul style="list-style-type: none"> - Tao (Japan) - ATEIS (Switzerland) - Bosch (Germany) - Paso (Italy) - Inter- M (Korea) 	Yes	1	Revise and Re-Submit
	<ul style="list-style-type: none"> - Sony - Sanyo - Hitachi 	Yes	1	Revise and Re-Submit
	<ul style="list-style-type: none"> - Bosch (Germany) - Pelco (USA) - Axis (Denmark) - Samsung (Korea) - GE (USA) 	Yes	1	Not Approved
	<ul style="list-style-type: none"> - Optima - Bosch - Honeywell - Guardall 	No	-	-

Vendor List	Submitted Material	No. of Rev	Engineer Response
<ul style="list-style-type: none"> - Furse (UK) - Wallis (UK) - Kingsmill (UK) 	Yes	2	Approved as Noted (Kingsmill)
<ul style="list-style-type: none"> - Kone (Italy) - Mitsubishi (Japan) - ThyssenKrupp (germany) - Schneider (France) - OTIS (USA) - SANYO (Japan) 	Yes	1	Revise and Re-Submit

Projects (SKEP III) - Package 2
 er

Vendor List	Submitted Material	No. of Rev	Engineer Response
ADASANI NIC TERRAIN MARLEY HEPWORTH OSMA OSTENNDROF-NG CONCEPT SAPCO CAFMO COSMOPLAST WORLD PLASTIC	UPVC pipes had been submitted only contractor should submit UPVC Fittings	REV 1	APPROVED AS NOTED
NIPPON TUBAS DELAMINI PIETRA HEBEI INTERPIPE BRISTOL SILKTUBE SHIELD	YES	REV 1	APPROVED AS NOTED
AFL CRANE ECONOSTO DELAMINI IBS IRC HEBEI SHURJOINTS	Yes	NO	APPROVED AS NOTED

Vendor List	Submitted Material	No. of Rev	Engineer Response
CRANE HATTERSLEY ECONOSTO OVENTROP T&A NIPCO HOLMES SHURJOINTS BRISTOL SHIELD	NO	NO	REVISE & RE-SUBMIT
FISCHER HILTI FLAMCO MEFA CADDY BRISTOL INKA	NO	NO	
H.O.TERICE ASHCROFT WEISS DWYER TOZEN HOLMES LUXOR	NO	NO	
DURAVET LAUFEN VILERROY&BOCH IDEAL STANDARD KEREMAG RAK VITRA PRESSALT GEBERIT	YES	NO	REVISE & RE-SUBMIT
GROHE HANSGROHE HANSA IDEAL STANDARD DELABIE THG	NO	NO	

				response
	AFICO KIMCO HEBEI KNAUF IZOCAM K FLEX	NO	NO	REVISE & RE-SUBMIT
re.	KSB ARMSTRONG ITT HOLDEN BROOKS PULLEN FAIRBANKS MORES PACO NEW HADEN CRANE BIRAL FLYGT ABS AFICO KIMCO HEBEI KNAUF IZOCAM K FLEX HOMA JUNG HERBORNER BRISTOL GRUNDFOS WILO SAER AURORA SPP ANDRITZ	NO	NO	REVISE & RE-SUBMIT
	ELKAY BLANCO SCHOCK	NO	NO	
	KBE GREENHECK RUSKIN TROX BSB MAT METROPOL AIR TECK AIR MASTER BSP SAEID	NO	NO	

KBE TITUS TROX AIR MASTER TECHNOSTREAM COOLING INDUSTRIES GOLDEN STAR	NO	NO	REVISE & RE-SUBMIT
DURODYNE DYNAIR SAFID	NO	NO	
ACME TWINCITY ELTA SODECA VENCO PENN SYSTEM AIR GREEN HECK S&P WOODS	NO	NO	REVISE & RE-SUBMIT
DAIKEN PETRA SKM PANASONIC MITSUBISHI (MHI) O GENERAL GREE FUJITSU SAMSUNG LG TOSHIBA TRANE	NO	NO	REVISE & RE-SUBMIT
DAIKEN PETRA SKM PANASONIC MITSUBISHI (MHI) O GENERAL DUNHAM-BUSH FUJITSU SAMSUNG LG TOSHIBA TRANE YORK	NO	NO	REVISE & RE-SUBMIT

	FLAMCO ARMSTRONG REFLEX EMRA-IMAS	NO	NO	REVISE & RE-SUBMIT
	CRANE HATTERSLEY T&A OVENTROP HOLMES SHIELD ACASO APE	NO	NO	
	MASON MERCER RUBBER KINETICS TOZEN	NO	NO	
	NORSEN ANGUS THORN COMBAT NAFFCO SUZHOU BRISTOL FULLBLAZE TOTAL KIDDE NOHA SHIELD	NO	NO	REVISE & RE-SUBMIT
	NIPPON SUMITOMO SABIC	NO	1	Rejected
	HURST HOVAL LOOS VISSMAN CLEARVER BROOKS WELLMAN ROBEY BURNHAM DE-DIETRICH CHAPEE SAINT ROCH BIASI	NO	NO	

Vendor List	Submitted Material	Notified	Engineer Response
RITE VENT SELKIRK RAAB DINAK METALOTERM ONTOP	NO	NO	
SPIROTECH FLAMCOVENT REFLEX TACO BELL&GOSSET SIPIROVENT PNEUMATIX T&A	NO	NO	REVISE & RE-SUBMIT
CRANE GIACOMINI COMAP TECOFI	NO	NO	
FISHER REGO COMAP HOLMES PIPEX AQUAPIPE	NO	NO	
UPONOR LK REHAU HENCO OVENTROP FORNARA APE	NO	NO	
GIACOMINI EMMETI LUXOR OVENTROP FORNARA APE	NO	NO	
GROHE GEBERIT	NO	NO	

	ARISTON BAXI FERROLI THEMEX A.O.SMITH	NO	NO	REVISE & RE-SUBMIT
	JR SMITH JOSAM WADE ZURN ACO	NO	NO	
	Not Mentioned	NO	NO	
	Not Mentioned	NO	NO	
	Not Mentioned	NO	NO	
	Not Mentioned	NO	NO	REVISE & RE-SUBMIT
	Not Mentioned	NO	NO	
	Not Mentioned	NO	NO	
	Not Mentioned	NO	NO	REVISE & RE-SUBMIT
	Not Mentioned	NO	NO	
	Not Mentioned	NO	NO	
	VIDARUS	YES	Rev 1& 2	REVISE & RE-SUBMIT
	Not Mentioned	NO	NO	
	Not Mentioned	NO	NO	
	Not Mentioned	NO	NO	

TYPE OF SUBMITTED MATERIAL

MECHANICAL SUBMITTALS

Materials to be Submitted =	26
Submitted Material =	20
of Approved Submitted Material =	50%
of Rejected Submitted Material =	3.8%
of (Revise & Re-Submit) Material =	23.1%

ELECTRICAL SUBMITTALS

Materials to be Submitted =	45
Submitted Material =	19
of Approved Submitted Material =	6.7%
of Rejected Submitted Material =	2.2%
of (Revise & Re-Submit) Material =	33.3%

PLUMBING SUBMITTALS

Materials to be Submitted =	41
Submitted Material =	10
of Approved Submitted Material =	17.1%
of Rejected Submitted Material =	2.4%

Annex -10-
Obstacle Log
(Site Obstacles)

Electrical Submittals Summary

Wahib Medanat Consultant Engineers

SKEP III - Site Obstacles PK (2)														
Dijlah Establishment Constr. Contracting														
S N	School	Location	Mobilization		Soil Test			Demolishing Work Status	Site Obstacles Status					Notes/Comments
			Mobilization % Complete	Expected Completion Date	Soil Test Status	Need for Redesign	Redesign Status		Trees	Pole & Cables (Electrical, Telephone...)	Existing Electromechanica l Obstacles	Construction	Others	
A	B	C	D	E	F	G	H	I	J	K	L	M	N	O
1	Jumana Bint Abi Taleb Basic Mixed School	Amman	100%	15-Dec-20	-	-	-	Not yet	-	-	-	-	-	A letter sent to MP/WH asking their approval on the previously submitted proposal by the Contractor
2	Hay Al Iskan Basic Mixed School	Jerash	100%	15-Dec-20	-	-	-	-	-	-	-	-	Cavities were discovered during of execution of excavation work	Visual inspection was conducted by the approved laboratory. Written report is expected from the lab in order to specify the next step
3	Thahr Al Sarow Basic School for Boys	Jerash	100%	15-Dec-20	-	-	-	-	-	-	-	-	-	-
4														
5														
6														
7														
8														
9														
10														
11														
12														

List of Tables and Figures

Tables

Table 1.	Main Progress Information	
Table 2.	Coordination & Progress Meetings	
Table 3.	Site Visits	
Table 4.	Official Letters	
Table 5.	Submittals Log- Shop Drawings	
Table 6.	Submittals Log- Materials Submittals	
Table 7.	Lab-Tests Results Log	
Table 8.	Demolition Log	
Table 9.	Grid 3x3 Inspection Report	
Table 10.	Progress Table	
Table 11-1.	Daily Plant & Equipment Log- Thahr Al Sarow Basic School for Boys	
Table 11-2.	Daily Plant & Equipment Log- Jumana Bint Abi Taleb Basic Mixed School	
Table 11-3.	Daily Plant & Equipment Log- Hay Al Iskan Basic Mixed School	
Table 11-3.	Daily Plant & Equipment Log- Hay Al Iskan Basic Mixed School	
Table 12-1.	Daily Manpower Log- Thahr Al Sarow Basic School for Boys	
Table 12-2.	Daily Manpower Log- Jumana Bint Abi Taleb Basic Mixed School	
Table 12-3.	Daily Manpower Log- Hay Al Iskan Basic Mixed School	
Table 13-1.	Percentage of Completion Thahr Al Sarow Basic School for Boys	
Table 13-2.	Percentage of Completion Jumana Bint Abi Taleb Basic Mixed School	
Table 13-3.	Percentage of Completion Hay Al Iskan Basic Mixed School	
Table 14.	Log of Activities	
Table 15.	Cash-Flow Log	

Figures

Figure 2-1. Daily Manpower Log- Thahr Al Sarow Basic School for Boys	
Figure 2-2. Daily Manpower Log- Jumana Bint Abi Taleb Basic Mixed School	
Figure 2-3. Daily Manpower Log- Hay Al Iskan Basic Mixed School	
Figure 3. Percentage of Completion- Thahr Al Sarow Basic School for Boys	
Figure 4. Percentage of Completion (Cumulative) Thahr Al Sarow Basic School for Boys	
Figure 5. Percentage of Completion- Jumana Bint Abi Taleb Basic Mixed School	
Figure 6. Percentage of Completion (Cumulative) Jumana Bint Abi Taleb Basic Mixed School	
Figure 7. Percentage of Completion – Hai Al Iskan Basic Mixed School	
Figure 8. Percentage of Completion (Cumulative) Hai Al Iskan Basic Mixed School	
Figure 9. Percentage of Completion (Cumulative Progress)- SKEP III Schools	
Figure 10. Cash-Flow Chart	