



SKEP III Home Office Support Site Visit Report

**WAHIB
MEDANAT**
consultant engineers

Consultant	Wahib Medanat Consultant Engineer	Rep No.	21-19042022
Contractor	Dijlah Establishment Constr. Contracting	Tender No.	(11/2019/USAID/SKEP/3/S) Schools for a Knowledge Economy Project (SKEP) - Phase (3) Package (1, 2)
Site Name	Hay Al Iskan Basic Mixed School- Jerash	Day/ Date	Tue. 19/04/2022
Duration of Project	450 Calendar Days	Total Project Budget	8,314,983.735 JD

No.	Visitors		Remarks
1	Suhair Amarin	- Project Dir./Head of Architectural Department	
2	Hashem Abu Kwaik	- Senior Civil Engineer	
3	Akram Khammes	- Head of Electrical Department	
4	Marwan Sonna'a	- Head of Mechanical Department	
5	Hasan Shaqboua	- Quality Control Manager	

Visit Notes

No.	Description
1	The supervision team observed that the available labors at the site are insufficient to work at the open work items. The team stressed on the Contractor to increase the labors to enough numbers.
2	The supervision team observed defects in the stones built at the front elevation. The Contractor was requested to replace.
3	The team inspected the external colored plastering at the building and the boundaries and requested the Contractor to clean all the white dirt at those walls due to the work in the stone coping or defects in the plastering material. Also, the Contractor was reminded of one of the requirements of the specifications, which is to apply protective coating at the top of plastering.



No.	Description
4	The team inspected the cladding and the start of installing the granite coping at the staircases and observed defects in the verticality of cladding and coping which led to a considerable large gap between the coping and the plastered wall. The team observed that the installed granite does not comply with the drawing details since the granite coping should be installed within the plastering layer not over. The Contractor was requested to rectify accordingly.
5	The team observed in several locations the gap between the granite coping and the plastered walls at corridors. The Contractor was requested to rectify.
6	The team observed defects at the connection points between inclined skirting and the stairs. Those defects are gaps and inaccurate cutting.
7	The Contractor was requested not to fix the cover of sockets before completing the painting work for internal walls. It was observed that the color around the sockets is not neat due to installation before completing painting work.
8	The team discussed with the Contractor the limit of the suspended ceiling at the staircase area and instructed the Contractor to extend the suspended ceiling to the start of the first step of the staircase.
9	The team inspected the installed steel protection screens and provided the Contractor with a number of remarks.
10	The team inspected the delivered doors leafs.
11	The team observed that the Contractor installed the frame of the suspended ceiling at corridors and stressed on that the mechanical heating pipes network and the insulation should be checked and approved before completing the work in the suspended ceiling.
12	The team instructed the Contractor to extend the granite coping over the porcelain at corridors to be also at the window jambs using small pieces.
13	The team inspected the granite frame around the elevator's door and the Contractor was requested to repair the corners.
14	The end of porcelain tiles and corridors at the staircase area should be coordinated with the granite tiling and the dimensions and cutting should be arranged correctly.
15	The team observed defects in the beech wood frame for a number of wooden doors at wet areas. The Contractor was requested to remove the defective doors out of the site.



No.	Description
16	The team inspected the work at external walls and stressed on the following: - Cartonal sheets should be fixed before backfilling. - Overlap between sheets should be ensured.
17	The team inspected the granite coping at the corridors in general and informed the Contractor to ensure the grinding of edges.



Project ID
Sign on
Site





Temperature check, sterilization and signing visitors' attendance sheet at the entrance of the site, complying with Covid-19 Protocol





General view of the project site
(Figure: 01, 02, 03 & 04)

(Figure: 01)



(Figure: 02)



(Figure: 03)



(Figure: 04)



(Figure: 05)

The team inspected the work at external walls and stressed on the following:

- Cartonal sheets should be fixed before backfilling
- Overlap between sheets should be ensured

(Figure: 05 & 06)



(Figure: 06)



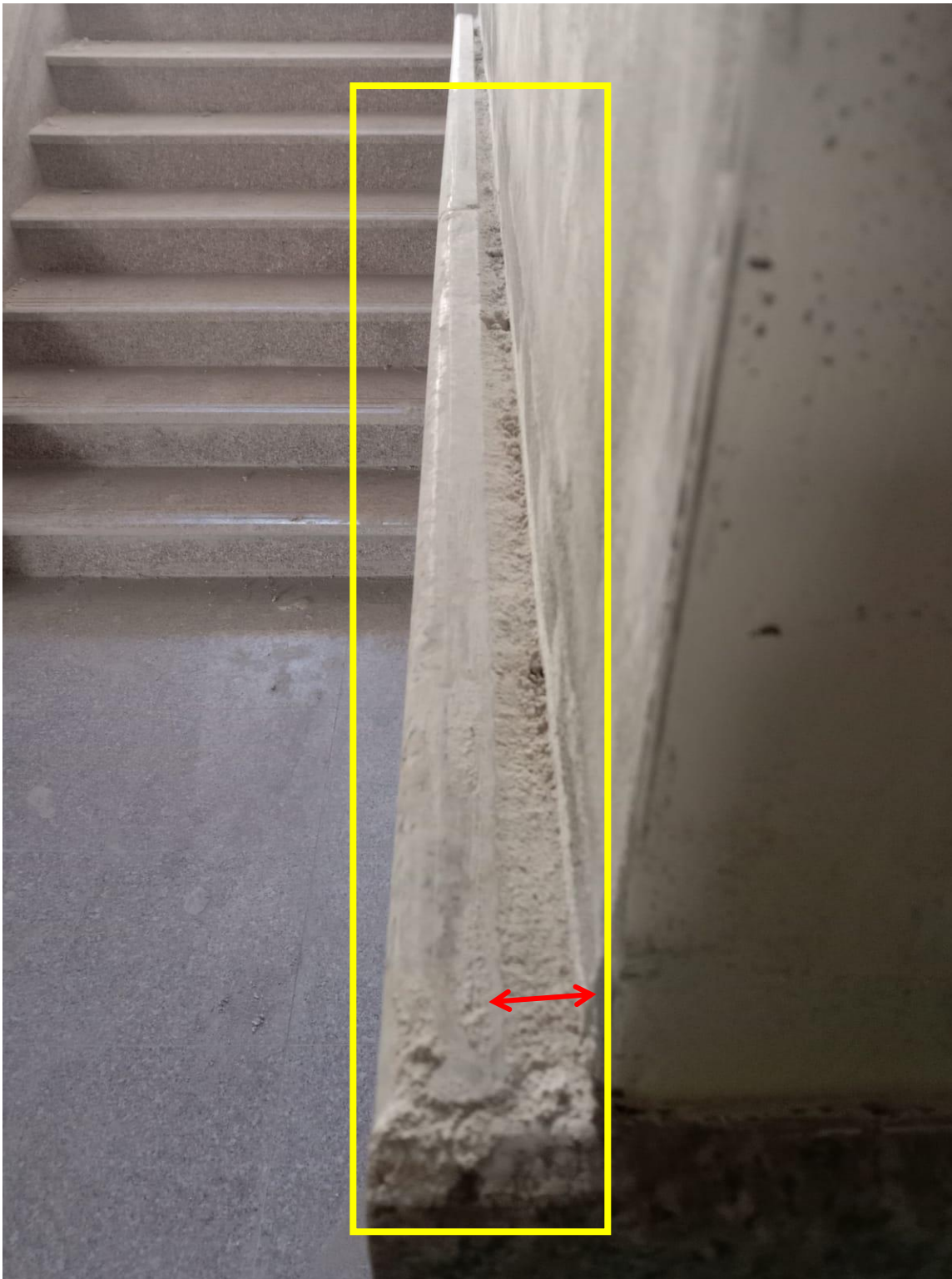
Inspecting external colored plastering at the building and the boundaries. the Contractor was reminded with one of the requirements of the specifications, which is to apply protective coating at the top of plastering

(Figure: 07)



The supervision team observed defects in the stones built at the front elevation. The Contractor was requested to replace

(Figure: 08)



The team inspected cladding and the installation of granite coping at the staircases and observed defects in the verticality of cladding and coping which made a large gap between coping and the plastered wall. The team found that the installed granite does not comply with the drawing details since the granite coping should be installed within the plastering layer not over it. The Contractor was requested to rectify accordingly

(Figure: 09, 10 & 11)

(Figure: 09)



(Figure: 10)



(Figure: 11)



The team observed defects at the connection points between inclined skirting and the stairs. Those defects are gaps and inaccurate cutting

(Figure: 12)



The team discussed with the Contractor the limit of the suspended ceiling at the staircase area and instructed the Contractor to extend the suspended ceiling to the start of the first step of the staircase

(Figure: 13)



The team inspected the granite coping at the corridors in general and informed the Contractor to ensure the grinding of edges

(Figure: 14)



The team inspected the granite frame around the elevators doors and the Contractor was requested to repair the corners

(Figure: 15)



The team observed defects in the beech wood frame for a number of wooden doors at wet areas. The Contractor was requested to remove the defective doors out of the site

(Figure: 16)



The team inspected the delivered doors leafs

(Figure: 17)



The team inspected the installed steel protection screens and provided the Contractor with a number of remarks

(Figure: 18)



The Contractor was requested not to fix the cover of sockets before completing the painting work for internal walls. It was observed that the color around the sockets is not neat due to installing before completing painting work

(Figure: 19)



Inspecting wall tiles at the wet areas

(Figure: 20)



The team instructed the Contractor to extend the granite coping over the porcelain at corridors to be also at the window jambs using small pieces

(Figure: 21)



observing the installation of the suspended ceiling frame at the corridor

(Figure: 22)



The end of porcelain tiles and corridors at the staircase area should be coordinated with the granite tiling and the dimensions and cutting should be arranged correctly

(Figure: 23)