



Consultant	Wahib Medanat Consultant Engineer	Rep No.	12-16022022
Contractor	Derar Saraireh & Sons for Engineering & Contracting	Tender No.	(11/2019/USAID/SKEP/3/S) Schools for a Knowledge Economy Project (SKEP) - Phase (3) Package (1, 2)
Site Name	Al Khansa' Basic Mixed School- Al Balqa	Day/ Date	Wed. 16/02/2022
Duration of Project	450 Calendar Days	Total Project Budget	9,789,417.840 JD

No.	Visitors		Remarks
1	Suhair Amarin	- Project Dir./Head of Architectural Department	
2	Hashem Abu Kwaik	-Senior Civil Engineer	
3	Akram Khammes	- Head of Electrical Department	
4	Marwan Sonna'a	-Head of Mechanical Department	
5	Hasan Shaqboua	-Quality Control Manager	

### Visit Notes

No.	Description
1	The supervision team inspected the delivered steel protection screen.
2	The team inspected the stone of the facades and observed that a number of defective stones were still not rectified.
3	The team observed water leakage at the ceiling of the multi-purpose hall and was informed that the waterproofing layers at the roof are still not completed.



4	The team inspected the continuation of porcelain floor tiling using the newly delivered tiles.
5	The team discussed with the Contractor the continuation of granite coping at the window jambs. The team requested the Contractor to prepare samples showing the coping connection between the granite coping and window sills.
6	The team inspected the aluminum windows under installation and stressed that the window jambs should be well finished and inspected by the supervision site team before installation of aluminum frames.
7	The team requested the Contractor to replace the broken window sills.
8	The team discussed with the Contractor the finishing of the porcelain wall cladding at the expansion joints in the corridors.
9	The team discussed with the Contractor the details of granite coping corners. The Contractor was requested to prepare samples of this for the review of the supervision.
10	The team discussed with the Contractor the connection between porcelain wall cladding at the corridors with the granite cladding at staircases.
11	The team discussed with the Contractor the connection of floor porcelain tiles of two corridors.
12	The team inspected the prepared wooden door sample and requested the Contractor to modify the location of the door lock and handle not to merge into the beech wood door frame.
13	Discussion regarding the clear height of door opening leading to the roof of the multi-purpose hall was conducted with the Contractor.
14	Discussing the fixing of mechanical cabinets such as fire extinguishers. The Contractor was requested to prepare two examples showing the installation of mechanical cabinets.
15	The team observed defects in parts of the executed floor tiles due to the teething. The supervision requested the Contractor to replace the teethed tiles and avoid the teething to occur again by not allowing the workers to walk on the newly tiled areas before drying.



Project ID  
Sign on Site





Sterilization and signing visitors' attendance sheet at the entrance of the site, complying with Covid-19 Protocol



General view of the project site

(Figure: 01, 02, 03 & 04)

(Figure: 01)



(Figure: 02)



(Figure: 03)



(Figure: 04)



The team inspected the stone of the facades and observed that a number of defective stones were still not rectified

(Figure: 05 & 06)

(Figure: 05)



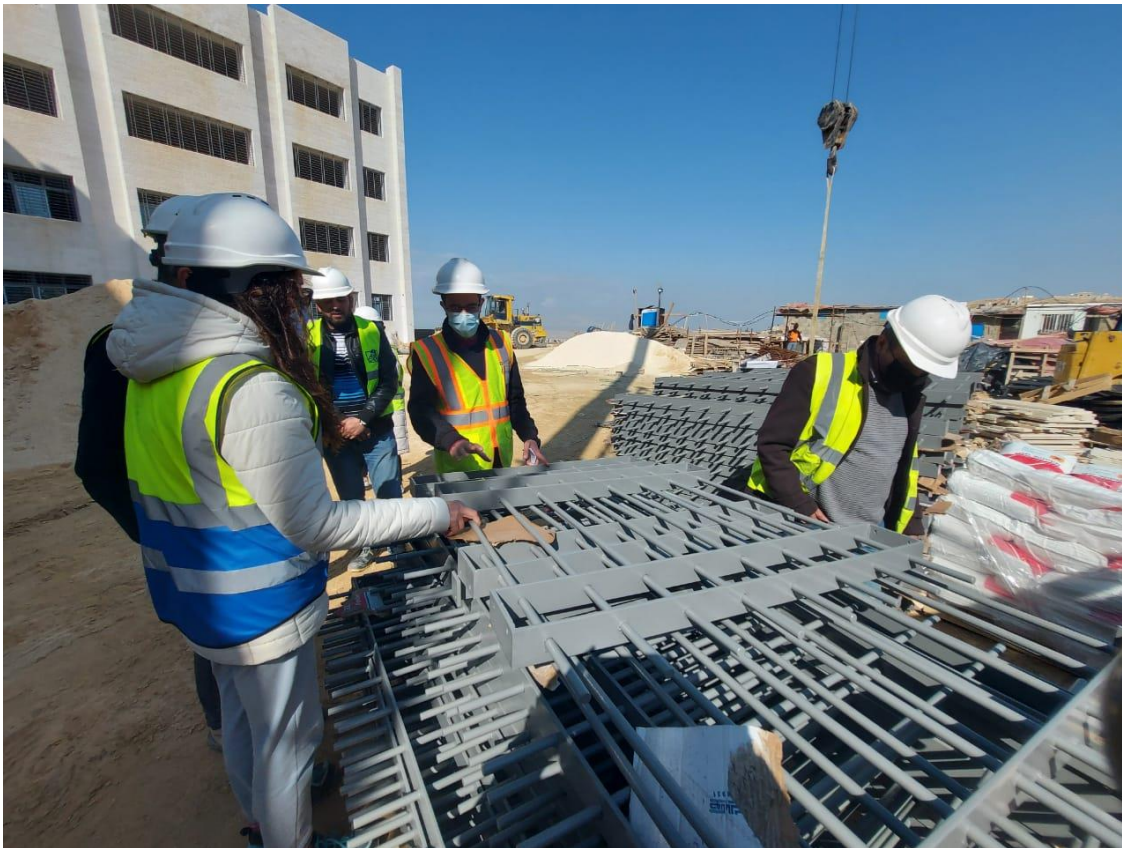
(Figure: 06)





The team observed water leakage at the ceiling of the multi-purpose hall and was informed that the waterproofing layers at the roof are still not completed

(Figure: 07)



The supervision team inspected the delivered steel protection screen

(Figure: 08)



A discussion regarding the clear height of door opening leading to the roof of the multi-purpose hall was conducted with the Contractor

(Figure: 09)



Discussing the fixing of mechanical cabinets such as fire extinguishers. The Contractor was requested to prepare two examples showing the installation of mechanical cabinets

(Figure:10)



(Figure: 11)

The team discussed with the Contractor the connection of floor porcelain tiles of two corridors



(Figure: 11 & 12)

(Figure: 12)



(Figure: 13)

the team observed defects in parts of the executed floor tiles due to the teething. The supervision requested the Contractor to replace the teethed tiles and avoid the teething to occur again by not allowing the workers to walk on the newly tiled areas before drying

(Figure: 13 & 14)



(Figure: 14)



The team discussed with the Contractor the finishing of the porcelain wall cladding at the expansion joints in the corridors

(Figure: 15)



Inspecting the execution of wall tiling for the corridors

(Figure: 16)



The team discussed with the Contractor the connection between porcelain wall cladding at the corridors with the granite cladding at staircases

(Figure: 17)



(Figure: 18)

The team inspected the aluminum windows under installation and stressed that the window jambs should be well finished and inspected by the supervision site team before installation of aluminum frames



(Figure: 18 & 19)

(Figure: 19)



The team requested the Contractor to replace the broken window sills

(Figure: 20)



Discussing the continuation of granite coping at the window jambs.

The team requested the Contractor to prepare samples showing the coping connection between the granite coping and window sills

(Figure: 21)





(Figure: 22)

The team inspected the prepared wooden door sample and requested the Contractor to modify the location of the door lock and handle not to merge into the beech wood door frame



(Figure: 22 & 23)

(Figure: 23)



The execution of KG mock-up

(Figure: 24)