



SKEP III Home Office Support Site Visit Report

**WAHIB
MEDANAT**
consultant engineers

fva

Consultant	Wahib Medanat Consultant Engineer	Rep No.	21-17072022
Contractor	Dijlah Establishment Constr. Contracting	Tender No.	(11/2019/USAID/SKEP/3/S) Schools for a Knowledge Economy Project (SKEP) - Phase (3) Package (1, 2)
Site Name	Hay Al Iskan Basic Mixed School- Jerash	Day/ Date	Wed. 17/07/2022
Duration of Project	450 Calendar Days	Total Project Budget	8,314,983.735 JD

No.	Visitors		Remarks
1	Suhair Amarin	- Project Dir./Head of Architectural Department	
2	Hashem Abu Kwaik	- Senior Civil Engineer	
3	Akram Khammes	- Head of Electrical Department	
4	Marwan Sonna'a	- Head of Mechanical Department	
5	Hasan Shaqboua	- Quality Control Manager	

Visit Notes

No.	Description
1	The supervision team observed that the number of skilled and unskilled labors is severely insufficient despite that the work is open in all parts of the site. The team expressed his resentment to this and stressed on the Contractor to provide sufficient number of labors. Also the team observed that the Contractor is not performing any activity related to the external work.
2	The team requested the Contractor to rectify the installation of the external doors similar to the approved sample at Jumana Bint Abi Taleb school of the same package.
3	The team observed that the Contractor performed rectification to the granite coping at the staircase.
4	The team observed clear waving in the painting work under progress for the suspended ceilings.



No.	Description
5	The team inspected the installed handrails for the staircase and observed that the fixation is not sufficient.
6	The team discussed with the Contractor the rectification of the dissimilarity regarding the ends of the parapets at the two sides of the main staircase at the same landing.
7	The team observed clear defects in a number of window jambs. The Contractor was requested to rectify the plastering and the painting accordingly.
8	The team observed variation in the installation of the aluminum section, the external plastering appears inside the window.
9	The team observed that a number of electrical outlets in the laboratories are fixed incorrectly. The team requested the Contractor to rectify.
10	The team observed accumulation of debris inside the building and requested the Contractor to remove outside and to check any defects in the tiles as a result of that.
11	The team requested the Contractor to continue the installation of heating radiators.
12	The team observed contradiction in the installation of the electrical outlets in the kitchen with the granite counter top for the cabinets. The team requested the Contractor to shift one outlet and the same for similar case.
13	The team observed that the Contractor has delivered and installed the acrylic wash trough in the sanitary unit.
14	The team observed that the Contractor is installing the sanitary fixtures at the sanitary units without using protection means for the floor tiles.
15	The team observed that the Contractor has not yet executed the required works for the electrical transformer. This status will delay the delivery of installation of the electrical transformer which might postpone the beginning of the use of the school.



Project ID Sign on Site



General view of the project site

(Figure: 01, 02, 03 & 04)

(Figure: 01)



(Figure: 02)



(Figure: 03)



(Figure: 04)



(Figure: 05)

The supervision team observed that the number of skilled and unskilled labors is severely insufficient despite that the work is open in all parts of the site. The team expressed his resentment to this and stressed on the Contractor to provide sufficient number of labors. Also the team observed that the Contractor is not performing any activity related to the external work

(Figure: 05, 06, 07 & 08)

(Figure: 06)





(Figure: 07)



(Figure: 08)



(Figure: 09)

The team requested the Contractor to rectify the installation of the external doors similar to the approved sample at Jumana Bint Abi Taleb school of the same package



(Figure: 09 & 10)

(Figure: 10)



(Before)

The team Previously discussed with the Contractor the suggestions to resolve the defects in granite coping at the corridors and staircases

(Figure: 11)



(After)

The team observed that the Contractor performed rectification to the granite coping at the staircase

(Figure: 12)



The team observed clear waving in the painting work under progress for the suspended ceilings

(Figure: 13)



The team discussed with the Contractor the rectification of the dissimilarity regarding the ends of the parapets at the two sides of the main staircase at the same landing

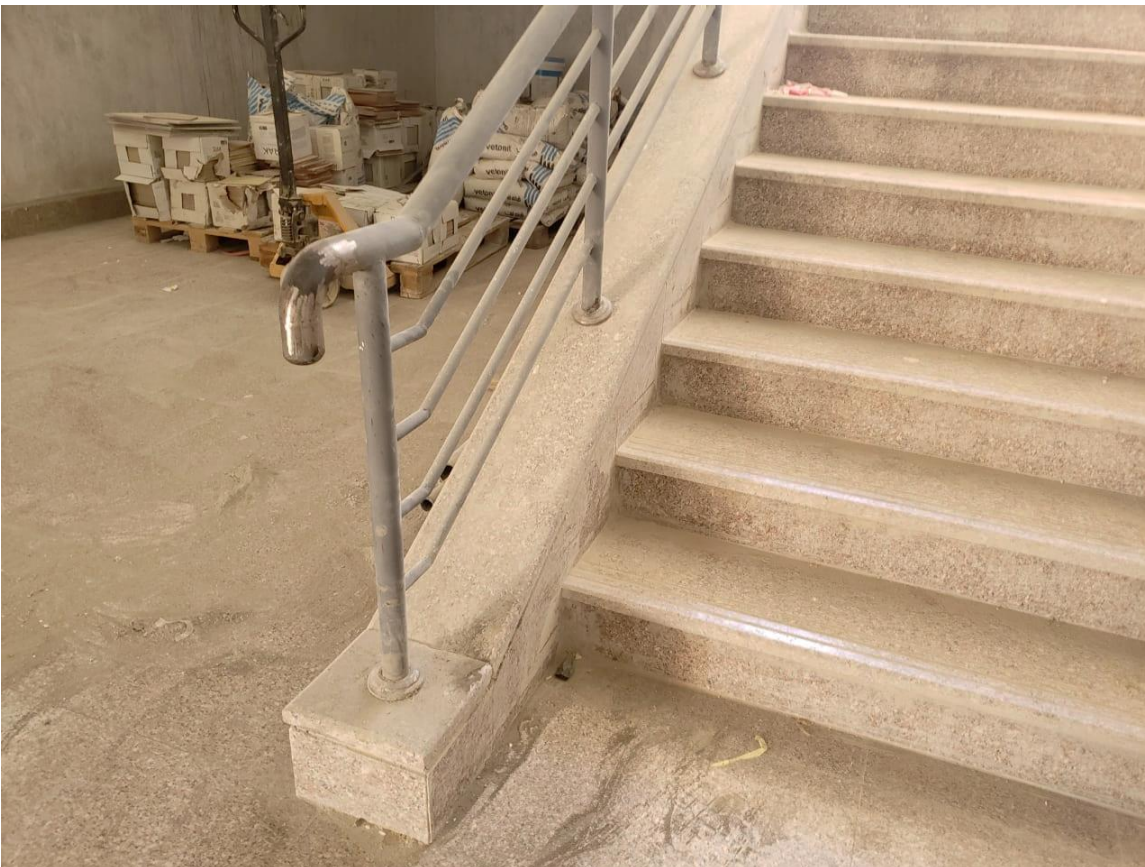
(Figure: 14)



(Figure: 15)

The team inspected the installed handrails for the staircase and observed that the fixation is not sufficient

(Figure: 15 & 16)



(Figure: 16)



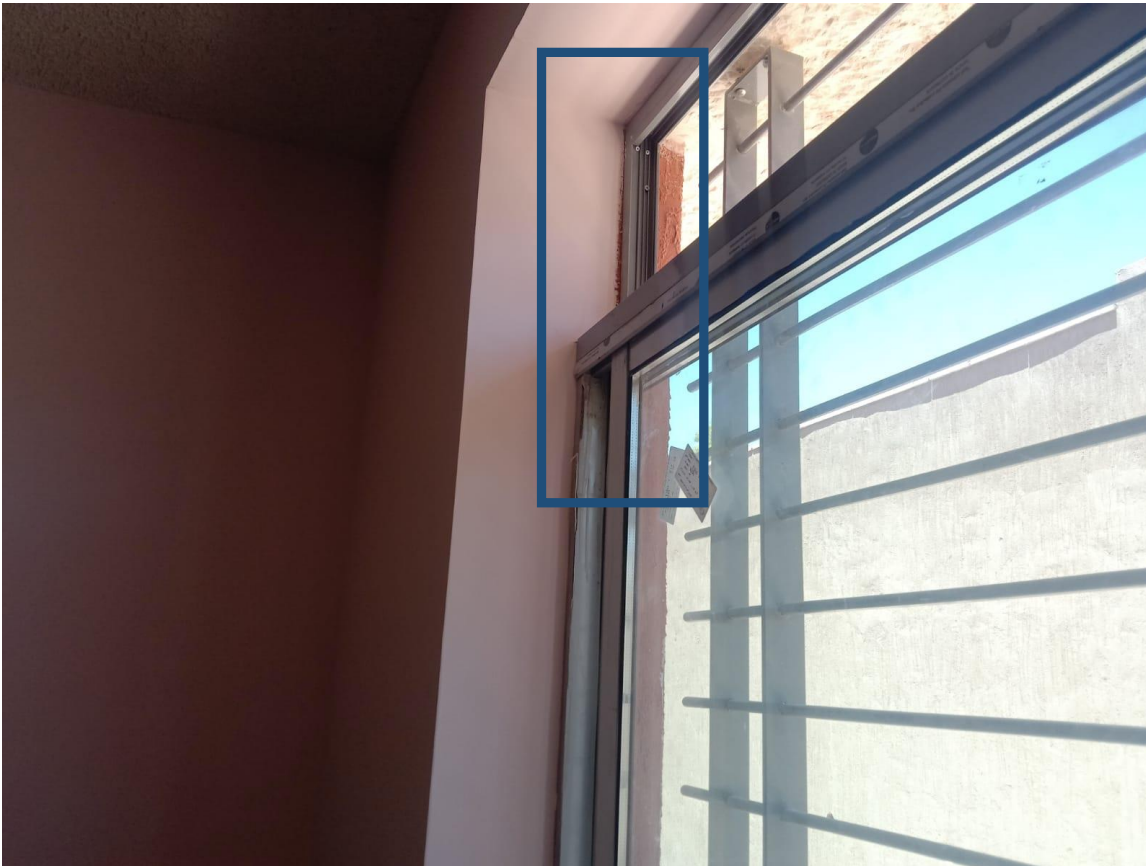
(Figure: 17)

The team observed clear defects in a number of window jambs. The Contractor was requested to rectify the plastering and the painting accordingly



(Figure: 17 & 18)

(Figure: 18)



The team observed variation in the installation of the aluminum section, the external plastering appears inside the window

(Figure: 19)



The team observed that a number of electrical outlets in the laboratories are fixed incorrectly. The team requested the Contractor to rectify

(Figure: 20)



(Figure: 21)

The team observed accumulation of debris inside the building and requested the Contractor to remove outside and to check any defects in the tiles as a result of that



(Figure: 21 & 22)

(Figure: 22)



The team observed contradiction in the installation of the electrical outlets in the kitchen with the granite counter top for the cabinets. The team requested the Contractor to shift one outlet and the same for similar case

(Figure: 23)



The team observed that the Contractor has delivered and installed the acrylic wash trough in the sanitary unit

(Figure: 24)



The team observed that the Contractor is installing the sanitary fixtures at the sanitary units without using protection means for the floor tiles

(Figure: 25)



Installed wooden doors inspection

(Figure: 26)



The team requested the Contractor to continue the installation of heating radiators

(Figure: 27)