



SKEP III Home Office Support Site Visit Report

**WAHIB
MEDANAT**
consultant engineers

Consultant	Wahib Medanat Consultant Engineer	Rep No.	12-04072021
Contractor	Derar Saraireh & Sons for Engineering & Contracting	Tender No.	(11/2019/USAID/SKEP/3/S) Schools for a Knowledge Economy Project (SKEP) - Phase (3) Package (1, 2)
Site Name	Al Khansa' Basic Mixed School- Al Balqa	Day/ Date	Sun. 04/07/2021
Duration of Project	450 Calendar Days	Total Project Budget	9,789,417.840 JD

No.	Visitors		Remarks
1	Suhair Amarin	- Project Dir./Head of Architectural Department	
2	Omar Elayan	-Senior Civil Engineer	
3	Akram Khammes	- Head of Electrical Department	
4	Marwan Sonna'a	-Head of Mechanical Department	
5	Hasan Shaqboua	-Quality Control Manager	

Visit Notes

No.	Description
1	<ul style="list-style-type: none"> - Quality check for stone mock-up wall. Stone texture should be unified and according to the approved sample. Stone lintel fixation method for wide windows was discussed. - Windows sills, for windows 5m width, the length of each piece of sill shall not be less than 1.2m, i.e. for 5m, 4 pieces shall be installed. Sills shall be in accordance to the specifications and architectural details. - For windows with width (1-3m), length of each piece shall be (1-1.2m) stressing on that the pieces for one window shall be equal.
2	Window jambs, the end of blockwork with all details such as polystyrene shall be ended with concrete edge at the opening.



3	Remarks regarding plastering were given.
4	The quality of concrete works complies with specifications.
5	The quality of blockwork is acceptable.
6	The Contractor was requested to spray water wherever needed in the site for purposes of dust control.
7	The storage status of steel reinforcement needs improvement.
8	The Contractor was instructed to provide special container for mortar mixing used for plastering.



Project ID Sign on Site



Temperature check, sterilization and signing visitors' attendance sheet at the entrance of the site, complying with Covid-19 Protocol



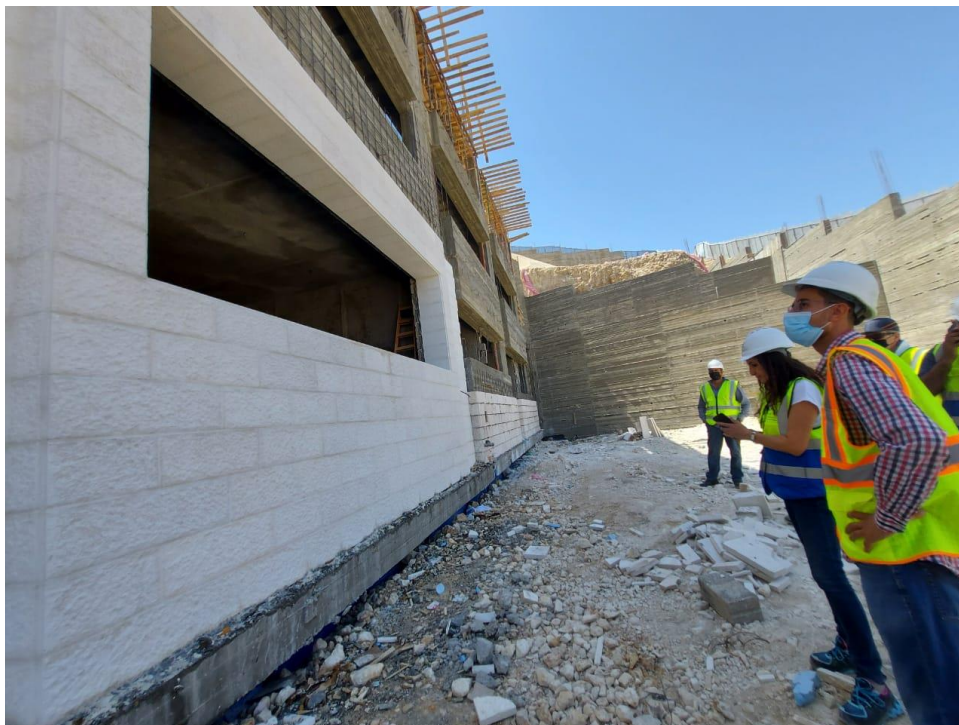


Starting of third floor slab formwork



Quality check for stone mock-up wall:

- Stone texture should be unified and according to the approved sample. Stone lintel fixation method for wide windows was discussed
- Windows sills, for windows 5m width, the length of each piece of sill shall not be less than 1.2m, i.e. for 5m, 4 pieces shall be installed. Sills shall be in accordance to the specifications and architectural details
- For windows with width (1-3m), length of each piece shall be (1-1.2m) stressing on that the pieces for one window shall be equal





Window jambs,
the end of
blockwork with all
details such as
polystyrene shall
be ended with
concrete edge
at the opening





Remarks regarding plastering were given



The quality of blockwork is acceptable



Visual test was conducted for stone delivered to site then it was compared to the approved sample with the participation of the site staff



A tour inside the site was conducted



The storage status of steel reinforcement needs improvement



The Contractor was instructed to provide special container for mortar mixing used for plastering.